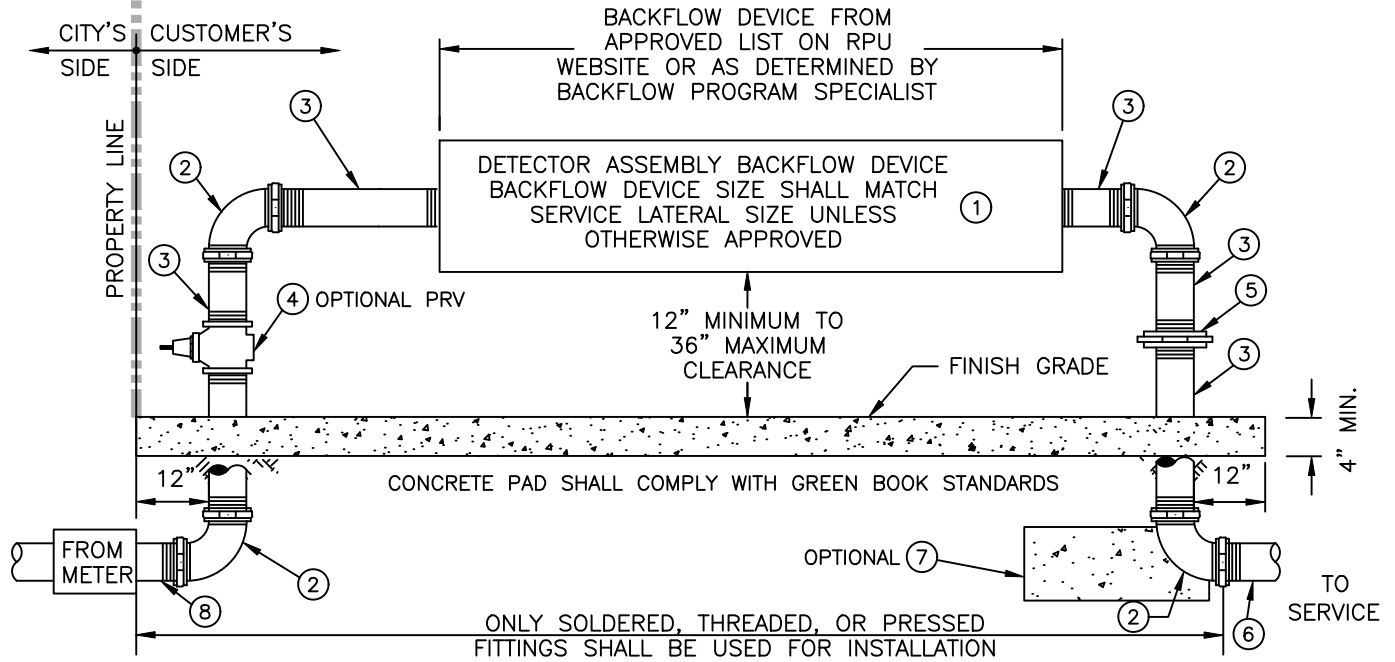


TYPICAL BACKFLOW DEVICE CONFIGURATION



NOTES: APPLIES TO BOTH NEW AND EXISTING SERVICES.

1. PRIOR TO INSTALLATION, LOCATION OF THE BACKFLOW DEVICE SHALL BE SUBJECT TO APPROVAL OF THE BACKFLOW PROGRAM SPECIALIST (951) 351-6282/6167. DEVICE SHALL BE LOCATED AS CLOSE TO THE METER AS PRACTICAL (MIN. 18", MAX. 24" BACK OF PROPERTY LINE.)
2. ANY DEVIATION FROM NOTE #1 IS SUBJECT TO CONDITIONS AS DESCRIBED WITHIN CWD-616-2.
3. INSPECTION OF THE PLUMBING AND TESTING OF THE BACKFLOW DEVICE IS REQUIRED PRIOR TO BACKFILLING, POURING CONCRETE, AND SERVICE ACTIVATION. CALL (951) 351-6282 OR (951) 351-6167 TO SCHEDULE APPOINTMENT.
4. THE BACKFLOW ASSEMBLY INSTALLATION, INCLUDING ALL APPURTENANCES AND MATERIALS, SHALL BE LEAD-FREE AND IN COMPLIANCE WITH THE APPROVED MATERIALS SPECIFIED BELOW.
5. NO OUTLETS, TEES, OR CONNECTIONS SHALL BE ALLOWED BETWEEN THE METER AND THE BACKFLOW DEVICE.

ITEM	EACH	DESCRIPTION
①	1	LEAD-FREE REDUCED PRESSURE PRINCIPLE BACKFLOW DEVICE
②	4	90 DEGREE ELBOW, BRASS OR HARD DRAWN COPPER**
③	4	RISER & NIPPLES, BRASS OR HARD DRAWN COPPER**
④	1	PRV VALVE (FOR PRESSURE IN EXCESS OF 80 PSI)**

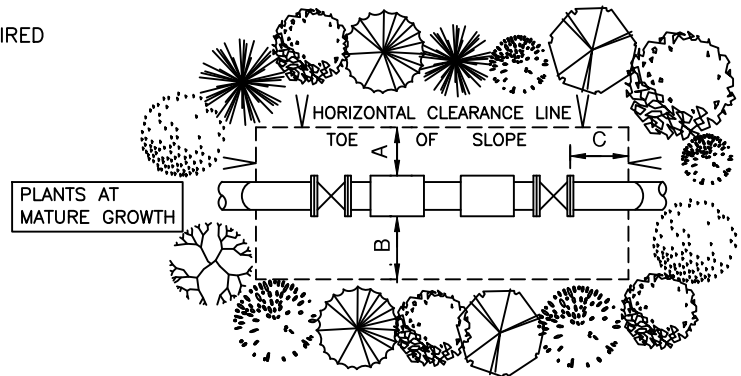
ITEM	EACH	DESCRIPTION
⑤	1	BRASS OR COPPER UNION* **
⑥	1	SCH 80 PVC NIPPLE CUT TO LENGTH WITH SLIP x SLIP COUPLER
⑦	1	CONCRETE THRUST BLOCK (OPTIONAL)
⑧	1	SERVICE LINE, BRASS OR HARD DRAWN COPPER**

*A SECOND UNION ON OPPOSITE RISER MAY BE REQUIRED IF CLEARANCE REQUIREMENTS ARE NOT MAINTAINED.

**BRASS OR COPPER MAY BE SUBSTITUTED WITH STAINLESS STEEL PER DISCRETION OF CITY BACKFLOW PROGRAM SPECIALIST.

ADEQUATE AND SAFE CLEARANCE MUST BE PROVIDED TO PERMIT TESTING AND REPAIR WORK

MINIMUM CLEARANCE SCHEDULE			
SIZE	A	B	C
3/4" THROUGH 2 1/2"	12"	18"	12"



OVERHEAD VIEW OF CLEARANCE REQUIREMENTS

APPROVALS

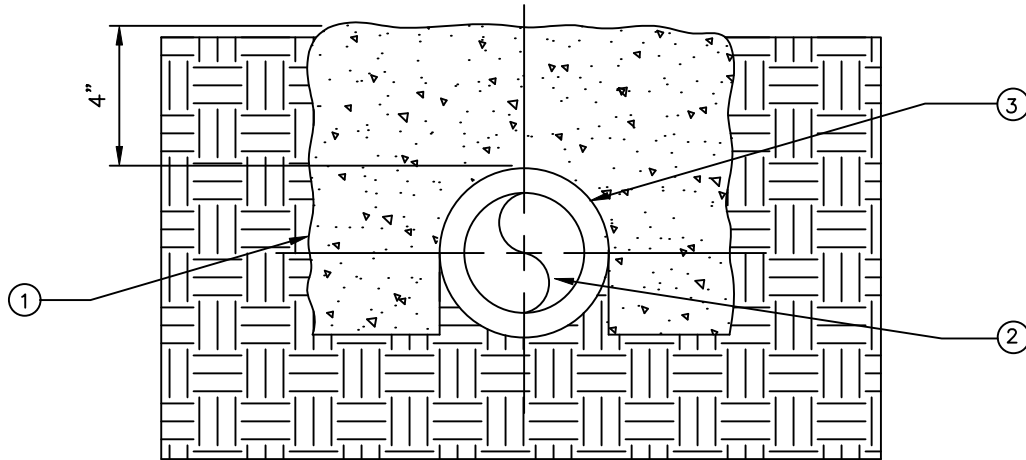
DIVISION	INITIAL	DATE
PLANNING	B. YAMAMOTO	8/25/22
DESIGN	J. FARLEY	8/25/22
CONTRACT ADMIN.	E. ESCOBAR	8/25/22
OPERATIONS	R. GLENNEY	8/25/22

BACKFLOW PREVENTION
ASSEMBLY 3/4" - 2 1/2" ABOVE
GROUND INSTALLATION



WATER
DISTRIBUTION & TRANSMISSION
PIPELINE CONSTRUCTION METHODS

PRIVATE SERVICE LINE ENCASEMENT



ITEM	DESCRIPTION
①	4" CONCRETE ENCASEMENT ALL SIDES*
②	BRASS OR COPPER WATER SERVICE LINE
③	CORROSION BARRIER

*ENCASEMENT AND/OR SLEEVING MAY BE REQUIRED BY CITY BACKFLOW PROGRAM SPECIALIST FROM METER BOX TO BACKFLOW ASSEMBLY.

IF DETERMINED BY PUBLIC UTILITIES THAT A BACKFLOW DEVICE IS UNABLE TO BE INSTALLED IN ACCORDANCE WITH CWD-616-1, NOTE 1, AN ALTERNATIVE LOCATION MAY BE APPROVED AND THE FOLLOWING CONDITIONS SHALL APPLY.

CONDITIONS:

1. A DRAWING DEPICTING THE PROPOSED PATH OF PIPING FROM THE WATER METER TO THE BACKFLOW DEVICE AND THE FINAL LOCATION OF DEVICE MUST BE SUBMITTED TO PUBLIC UTILITIES FOR APPROVAL.
2. ONCE APPROVED, INSTALLER MUST COORDINATE WITH THE BACKFLOW PROGRAM SPECIALIST TO OVERSEE, INSPECT, AND DOCUMENT THE INSTALLATION. CORROSION BARRIER TO BE INSPECTED PRIOR TO POURING OF CONCRETE.
3. MATERIALS SHALL REMAIN IN COMPLIANCE AS SPECIFIED WITHIN CWD-616-1.
4. MATERIALS SHALL BE IN COMPLIANCE WITH THE APPROVED MATERIALS SPECIFIED ON THE TABLE ABOVE.

APPROVALS		
DIVISION	INITIAL	DATE
PLANNING	B. YAMAMOTO	8/25/22
DESIGN	J. FARLEY	8/25/22
CONTRACT ADMIN.	E. ESCOBAR	8/25/22
OPERATIONS	R. GLENNEY	8/25/22



**WATER
DISTRIBUTION & TRANSMISSION
PIPELINE CONSTRUCTION METHODS**

**BACKFLOW PREVENTION
ASSEMBLY ALTERNATIVE
LOCATION INSTALLATION**