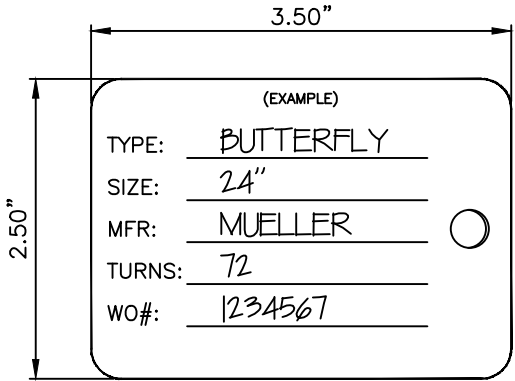
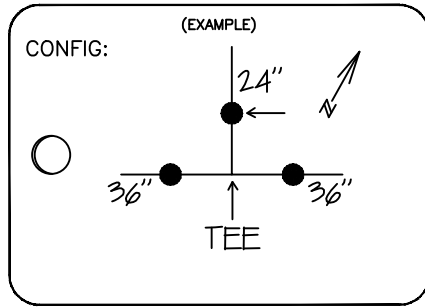


**VALVE BOX LINER SPECIFICATIONS:**  
 20 GA x 18" LONG GALV STL SPLIT-SLEEVE WITH 1 1/2" OVERLAP AND 1/2" LIP (FLARE) ON ONE END.  
 OD FOR 8" VALVE BOX = 7 3/4"  
 OD FOR 10" VALVE BOX = 9 3/4"  
 10" VALVE BOX FOR 2" B.O. ONLY

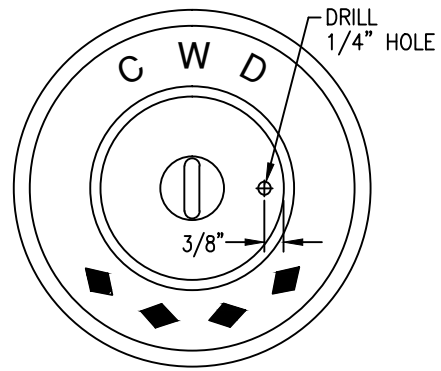
**SECTIONAL DETAIL**



**FRONT OF TAG**  
**TEMPORARY VALVE TAG ON NEW VALVES**



**BACK OF TAG**



**TYPICAL VALVE BOX CAP**

- NOTES:**
- 1.) TAG MATERIAL SHALL BE WHITE, HEAVY-DUTY 20 MIL THICK VINYL.
  - 2.) TEMPORARY VALVE TAG SHALL BE ATTACHED TO SCREW ON BOTTOM OF VALVE BOX CAP USING WIRE TIES.
  - 3.) ALL VALVE INFORMATION SHALL BE WRITTEN WITH INDELIBLE MARKER.

- NOTES:**
- 1.) THIS STANDARD IS TO BE USED IN CONJUNCTION WITH STANDARD DRAWINGS CWD-500, CWD-504, AND CWD-510.



**WATER DISTRIBUTION & TRANSMISSION  
 PIPELINE CONSTRUCTION METHODS**

**TYPICAL SPLIT-SLEEVE LINER AND CAP  
 FOR 8" AND 10" VALVE BOX**