

BILL OF MATERIALS		
ITEM	QUANTITY	REFERENCE
① 8" DI 90° ELL (LONG RADIUS) (FL x MJ)	2	
② 8" DI 90° ELL (LONG RADIUS) (MJ x MJ)	1	CWD-500
③ 8" RW GATE VALVE (MJ x MJ)		
④ 8" DIP AS REQUIRED (W/ RESTRAINED MJ ADAPTERS)	VARIES	
⑤ 8" MJ END CAP W/ 1" TAP, (IPT)	1	
⑥ 1" BALL CORP STOP (MIPT x MIPT) & 1" BRASS CAP		
⑦ 30" MANHOLE COVER & RIM 30" ID CONC MANHOLE SECTION		CWD-811
⑧ 8" GATE BOX CAP, GALV SPLIT-SLEEVE, AND 12 GA STL PIPE	1	CWD-515
⑨ 8" FLANGED OUTLET		CWD-300
⑩ 8" FLANGE INSULATION KIT	1	

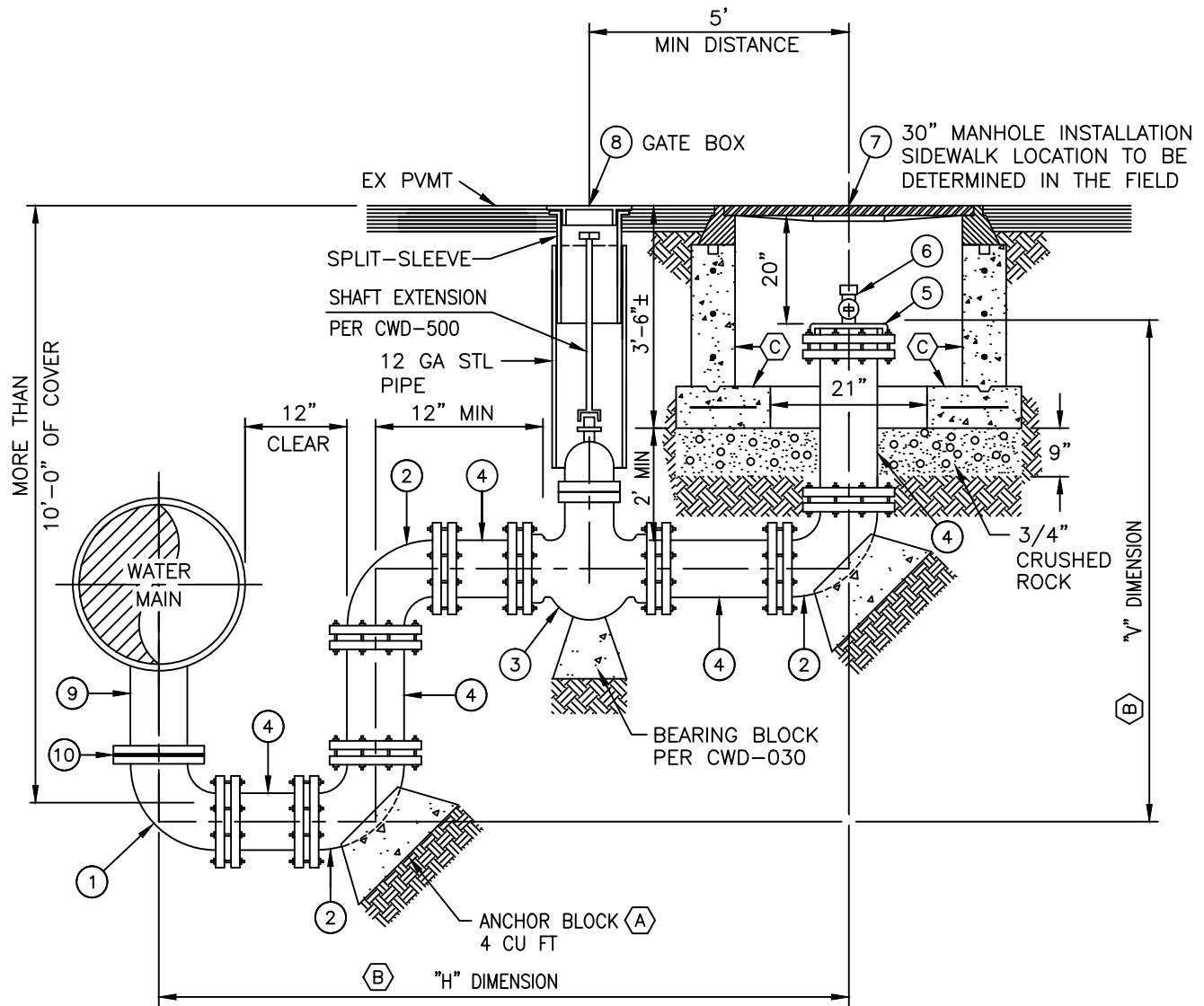
NOTES:

- (A) ANCHOR AND BEARING BLOCKS PER CWD-030
- (B) STATION, LOCATION, AND SPECIAL NOTES PER PLAN AND PROFILE SHEETS
- (C) PRECAST CONCRETE BASE & SHAFT ONLY. GRADE RINGS NOT PERMITTED.



WATER DISTRIBUTION & TRANSMISSION
PIPELINE CONSTRUCTION METHODS

8" BLOW-OFF / PUMPER OUTLET
BELOW GRADE
WITH LESS THAN 10' OF COVER



BILL OF MATERIALS

ITEM	QUANTITY	REFERENCE
① 8" DI 90° ELL (LONG RADIUS) (FL x MJ)	2	
② 8" DI 90° ELL (LONG RADIUS) (MJ x MJ)	1	CWD-500
③ 8" RW GATE VALVE (MJ x MJ)		
④ 8" DIP AS REQUIRED (W/ RESTRAINED MJ ADAPTERS)	VARIES	
⑤ 8" MJ END CAP W/ 1" TAP (IPT)	1	
⑥ 1" BALL CORP STOP (MIPT x MIPT) & 1" BRASS CAP		
⑦ 30" MANHOLE COVER & RIM 30" ID CONC MANHOLE SECTION		CWD-811
⑧ 8" GATE BOX CAP, GALV SPLIT-SLEEVE, AND 12 GA STL PIPE	1	CWD-515
⑨ 8" FLANGED OUTLET		CWD-300
⑩ 8" FLANGE INSULATION KIT		

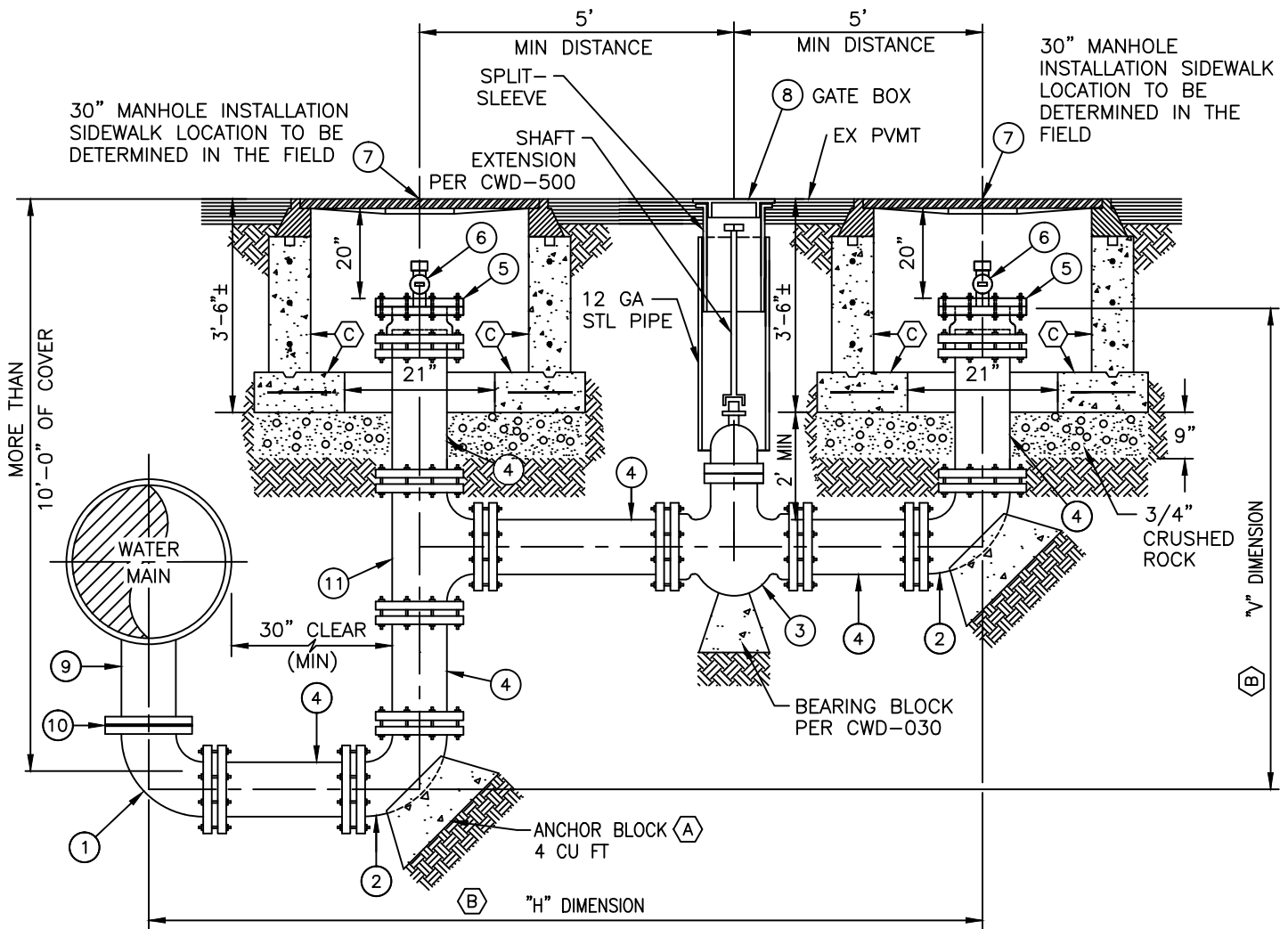
NOTES:

- (A) ANCHOR AND BEARING BLOCKS PER CWD-030
- (B) STATION, LOCATION, AND SPECIAL NOTES PER PLAN AND PROFILE SHEETS
- (C) PRECAST CONCRETE BASE & SHAFT ONLY. GRADE RINGS NOT PERMITTED.



**WATER DISTRIBUTION & TRANSMISSION
PIPELINE CONSTRUCTION METHODS**

**8" BLOW-OFF
BELOW GRADE
WITH MORE THAN 10' OF COVER**



BILL OF MATERIALS		
ITEM	QUANTITY	REFERENCE
(1) 8" DI 90° ELL (LONG RADIUS) (FL x MJ)	1	
(2) 8" DI 90° ELL (LONG RADIUS) (MJ x MJ)	2	
(3) 8" RW GATE VALVE (MJ x MJ)	1	CWD-500
(4) 8" DIP AS REQUIRED (W/ RESTRAINED MJ ADAPTERS)	VARIES	
(5) 8" FLG x MJ ADARTOR W/ 8" BLIND FLG & 1" TAP, (IPT)	2	
(6) 1" BALL CORP STOP (MIPT x MIPT) & 1" BRASS CAP	2	
(7) 30" MANHOLE COVER & RIM 30" ID CONC MANHOLE SECTION	2	CWD-811
(8) 8" GATE BOX CAP, GALV SPLIT-SLEEVE, AND 12 GA STL PIPE	1	CWD-515
(9) 8" FLANGED OUTLET	1	CWD-300
(10) 8" FLANGE INSULATION KIT	1	
(11) 8" DI TEE (MJ x MJ x MJ)	1	

- NOTES:**
- (A) ANCHOR AND BEARING BLOCKS PER CWD-030
 - (B) STATION, LOCATION, AND SPECIAL NOTES PER PLAN AND PROFILE SHEETS
 - (C) PRECAST CONCRETE BASE & SHAFT ONLY. GRADE RINGS NOT PERMITTED.



WATER DISTRIBUTION & TRANSMISSION
PIPELINE CONSTRUCTION METHODS

8" BLOW-OFF / PUMPER OUTLET
BELOW GRADE
WITH MORE THAN 10' OF COVER