

CELEBRATING
Earth
DAY



BUGGY ADVENTURES



RIVERSIDE INSECT FAIR

ACTIVITY BOOKLET

BROUGHT TO YOU BY:



CRITTER QUEST

START

1

Which lab has Bug Masks?

Circle the correct answer.



Select the correct lab:

- a. Weirauch Lab
- b. CIBER Lab
- c. CASS Lab



2

Which lab has the 3D Drosophila Glass Art?

Circle the correct answer.

- a. Yamanaka Lab
- b. Urban Entomology
- c. Herbivores & Parasites



3

Can you name a type of wild bee that resides in the Inland Empire?



4

Which lab researches the insect-infecting worm? Circle the correct answer.

- a. Yamanaka Lab
- b. Urban Entomology
- c. Herbivores & Parasites



During your visit at the **Riverside Insect Fair**, visit each **UCR Entomology Research Booth** per the map and the Earth Day area to get the answers to the questions below. Once completed return to the **INFO Booth** for a prize! (While supplies last.)

**BOOTHS
16 - 24**

5 Circle invasive insects that the Hoddle lab works on.

The Spotted Lanternfly

The Gold-Spotted Oak Borer

Asian Giant Hornet

South American Palm Weevil

Argentine Ants

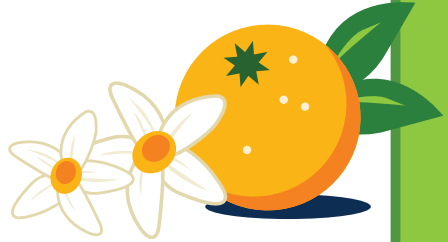
Asian Citrus Psyllid

Avocado Lace Bug

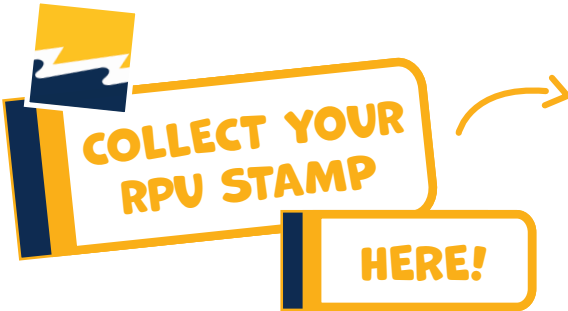
The Cotton Seed Bug

Screwworm

6 Meet a California Native Insect
Collect a stamp here.



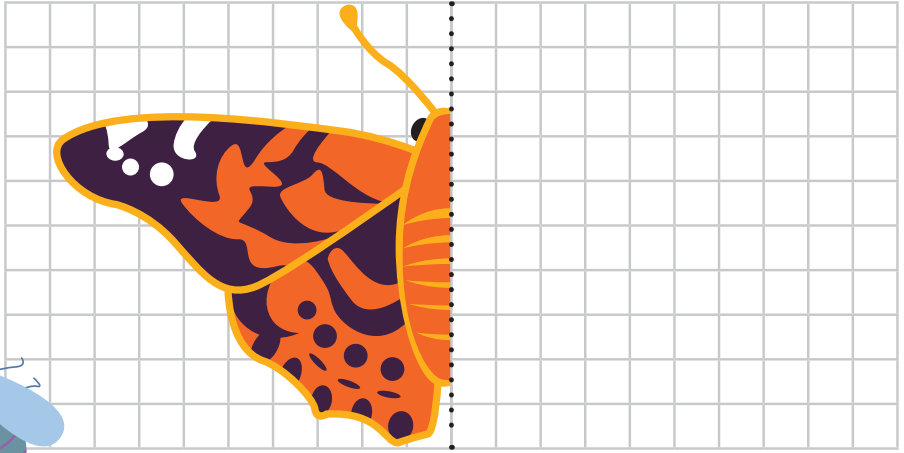
7 When buying a citrus tree in a quarantine zone, what should you look for that shows the tree is free from disease?





SYMMETRY DRAWING

Complete the picture by drawing the other half.



BUG BASICS

Fill in the parts of bug using the word bank.

THORAX
HEAD

LEGS
EYES

ANTENNA
ABDOMEN





How many bugs with party hats are on these 2 pages?

BUTTERFLY LIFE CYCLE

These are the 4 stages in the life of a butterfly.

BUTTERFLY
BUTTERFLY
BUYFLY
BUYFLY



To start the cycle over,
butterflies lay eggs
onto leaves.

EGG



Butterflies lay eggs
which then hatch
into tiny larvae or a...

CHRYSA LIS
(PUPA)



To
become
a butterfly,
the chrysalis
must complete
metamorphosis.

GATERPILLAR
GATERPILLAR



TO GROW,
caterpillars feed on
leaves like milkweed
then hang upside down
to form into a chrysalis.

BLACK OUT

BUG POETRY



Make a poem out of the passage below. Circle the words you like and black out those you don't. At the end, read your poem.

Ants have been around for almost 130 million years and can be found almost everywhere except for Antarctica and the Arctic. There are over 12,000 species of ants, which range in size and color. Some are even translucent. Ants are one of the world's strongest creatures in relation to their size and can carry up to 50 times their own bodyweight. Ants are essential to our ecosystem.





Our planet is like a garden, and each drop of water keeps everything growing and thriving. This Earth Day let's join forces to protect our garden by using water wisely.

Turn off the tap when you're brushing your teeth – it's a way to save water and keep our oceans happy.

If you find leaks in your castle (or home), be brave and fix them, stopping any water monsters from escaping.

Remember, only use as much water as you need, just like sharing snacks with friends.

Capture the water while it's heating up for your bath or shower in a bucket to share with the trees outside – they'll thank you with big, leafy smiles.

AND HERE IS A SPECIAL EARTH DAY REQUEST:

Let's put on our Earth Day capes and celebrate by being Smart Water Heroes – making our garden even more beautiful!

Hop on board our energy-saving mission and supercharge your planet-saving skills with the following energy tips.



When you leave a room, zap those lights off.



Unplug chargers and gadgets when they're on a break – it's like putting them in an energy snooze.



When the sun is on full sizzle mode, swoop in and close the curtains to keep the heat away.

These simple tricks make a big difference in saving energy and keeping our planet happy.

UNSCRAMBLE

laenpt

--	--	--	--	--	--	--

uns

--	--	--

atrew

--	--	--	--	--

ianr

--	--	--	--

rtaeh

--	--	--	--	--

luodcs

--	--	--	--	--	--	--

seroff

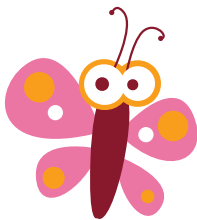
--	--	--	--	--	--

clycere

--	--	--	--	--	--	--	--

rudece

--	--	--	--	--	--



WORD SEARCH

W T M Y J X H V K K S N S K K
 A P R S X G A S K D U H R Z P
 T R N B M I B H C W H W N M D
 E O W F S H V A I H A F L E G
 R T R V Z C Q R U C Q S R N X
 X E L D B T W E I O H H Q E T
 Q C O R L E A R N N P Q R R Q
 L T S D E S J L J S L Q G G G
 L J T R Z C S G L E A K X Y D
 H D R E N X Y L C R N L P K M
 Q H E U Y N K C V V E G N K N
 V S D S F L W M L E T A O F Y
 X I U E A B Y H O E J N F K X
 S H C K E G U E T T S Q E V D
 T C E Q V W V M G O W U W S X

CONSERVE

PROTECT

RECYCLE

REDUCE

REUSE

SHARE

LEARN

ENERGY

WATER

PLANET

BRANCH OUT WITH
TREES

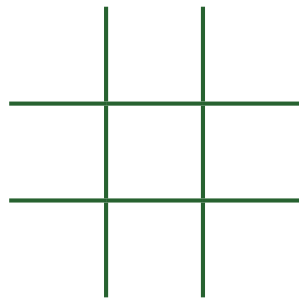
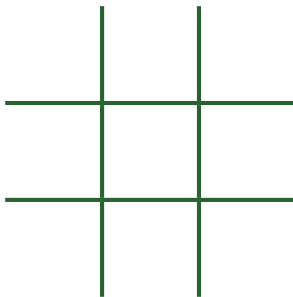
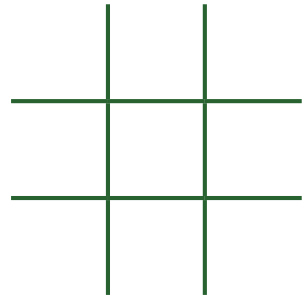
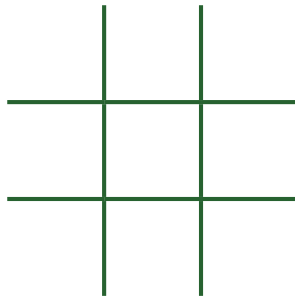
Did you know...

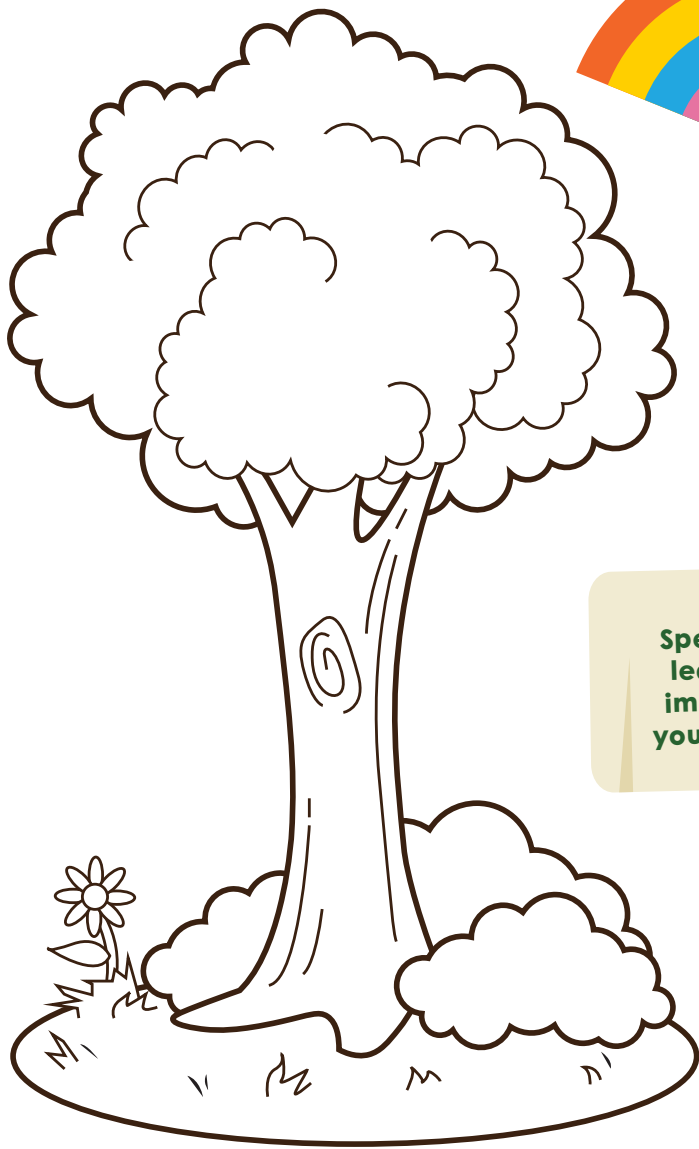
- - Trees offer insects a home and food to eat
- - Water-wise trees provide shade and can reduce energy use
- - Native California trees conserve water



TIC-TAC-

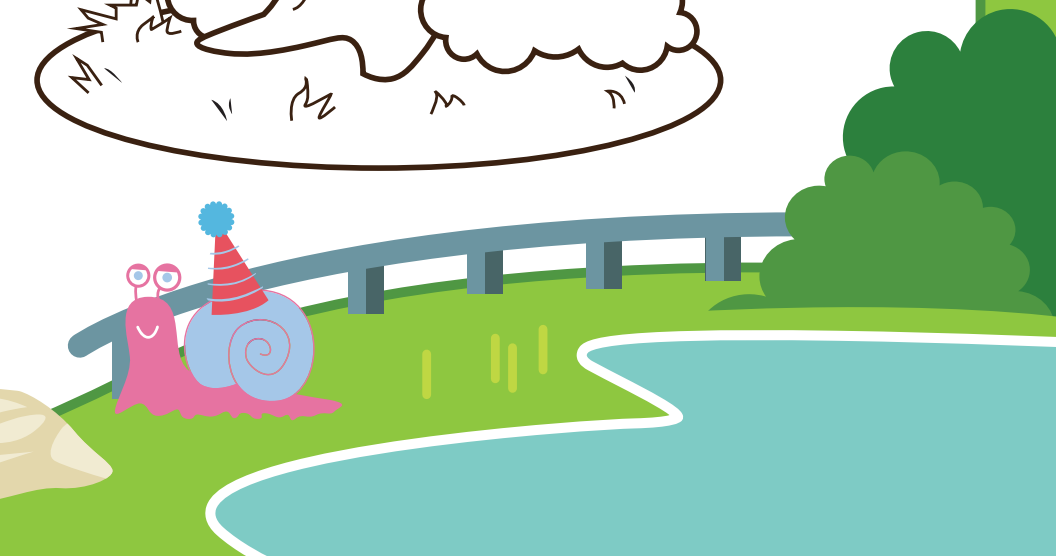
TOE





NOTE:

Spending a little time and learning more about the importance of trees to your home and our city!



COMMUNITY ROOM:
TOUCH-A-BUG



STAGE



BENCHES

TAKE THE ELEVATOR UP
TO ENJOY PROGRAMS
INSIDE LIBRARY

- Art Exhibit by Riverside Arts Council
- 3-D Printing
- Virtual Reality
- Storytime

*Additional Restrooms
Inside Library*

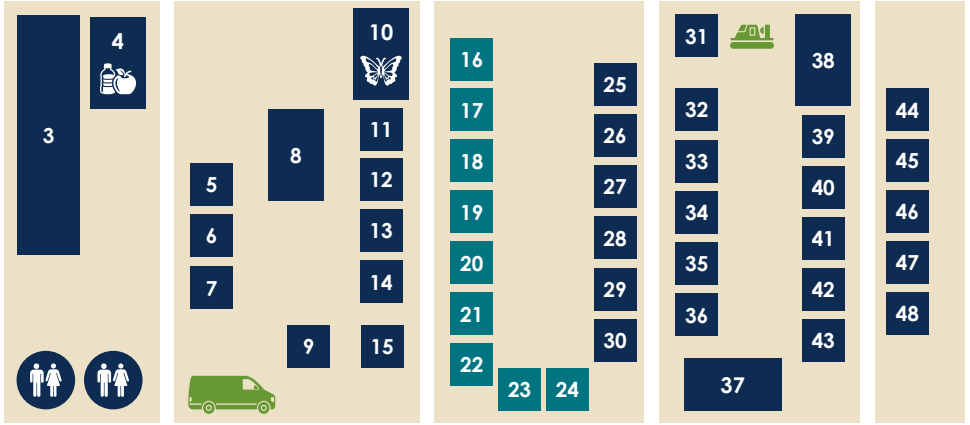
ELEVATOR

BREEZEWAY



1

2



1. UCR Entomology Graduate Association
2. I Love E (Event Merchandise)
3. Wyland Foundation Trailer
4. Food Court
- 5-6. RPU: Energy & Water
7. Toro Irrigation
8. Division 9 Gallery
9. 311
10. Butterfly Tent
- 11-14. Museum of Riverside
15. City of Riverside CERT
- 16-24. UCR Entomology Research Booths
25. Library Foundation
26. Western Municipal Water District
27. Riverside-Corona Resource Conservation District
28. Paint & Twist
29. Master Gardner UCR
30. Hand-Eye Coordination
31. Northwest Vector Control
32. Xerces Society
33. Bobcat Farms
34. Orpheus Collar
35. Elephants, Etc.
36. IE Kids Outdoors
37. Eddy's Bugs
38. Meraki Plants
39. Rivers and Land Conservancy
40. Boy Scouts of America
41. Cellar Door Bookstore
42. Carnal Flora
43. Riverside Agricultural Commissioner's Office
44. A Lost Art
45. Things They Love
46. California Department of Food and Agriculture
47. Bernice's Furniture
48. The Bug Gals



Information Booth
(Event Information,
Critter Quest Prize,
and City Information)



Parks, Recreation
and Community
Services Wellness Bus



Hoovercraft