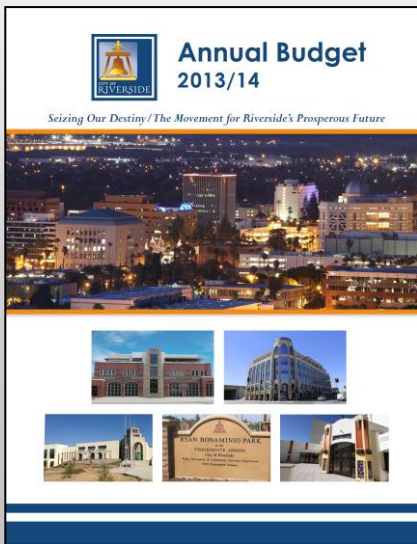


2013/14

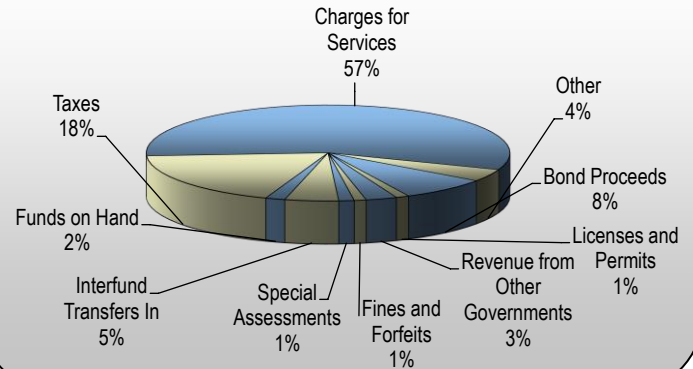
BUDGET IN BRIEF

INTRODUCTION TO THE ANNUAL BUDGET

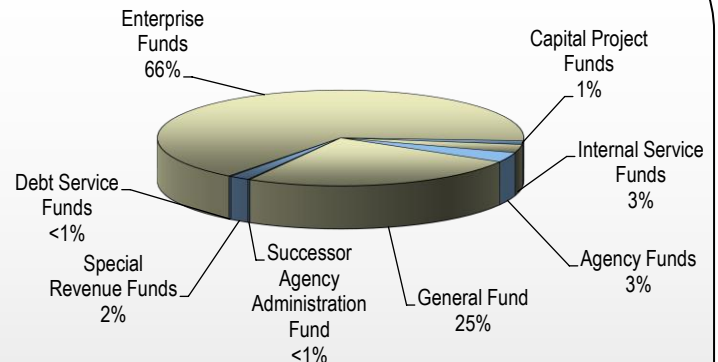
The City of Riverside's annual budget is a key communication tool, which illustrates to the public the City's strategic direction, sources of funding, and types of expenditures. This document seeks to distill the budget document into a useful set of tables, charts, and diagrams for the use of the general public. The City's total combined annual budget for fiscal year 2013/14 is **\$894,182,525**.



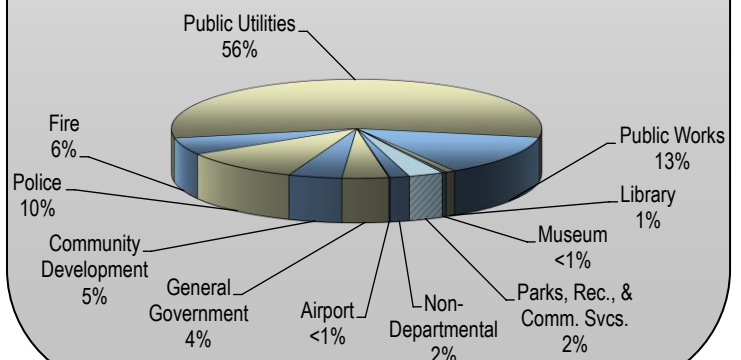
HOW IS THE BUDGET FUNDED?



HOW IS THAT MONEY SPENT?



It may be helpful to think of the different City funds as multiple "business enterprises". Just as businesses vary by size and revenue, so too do the various City funds. There is a tendency to equate the City's General Fund with the City's financial status as a whole, but it is important to remember that the General Fund is just one of many funds, or places of City business.



CITY COUNCIL STRATEGIC GOALS

The Budget is linked to the City Council's Strategic Goals, developed in 2004 and amended in 2008 and 2009. These goals are at the heart of what our community expects from its local government. In turn, these goals are woven throughout the fiscal year 2013/14 Annual Budget, which allocates the resources necessary to achieve our shared vision. The City Council's Strategic Goals are:

- Economic Development
- Environmental Leadership
- Transportation
- Livable Communities and Neighborhoods
- Arts and Innovation

WHAT IS THE GENERAL FUND?

The General Fund provides core City services including police, fire, parks, recreation, libraries, and street maintenance. Riverside Public Utilities, the Riverside Airport, and other “business enterprises” of the City with their own distinct revenue sources are accounted for in other Funds. The General Fund is primarily supported by tax revenues, fees, and charges that are collected within the City of Riverside. Therefore, most core City services are budgeted in the General Fund; and it is here that you can see the greatest impact that your tax dollars and fees paid to the City have on providing services to the citizens of the City of Riverside.

The fiscal year 2013/14 General Fund budget totals \$222.5 million. This amount also takes into account something called “Managed Savings”, which is the estimated portion of the budget that will not be realized as actual expenditures. The fiscal year 2013/14 budget proposes to balance revenues and expenditures through the use of General Fund reserves while continuing to maintain a reserve balance of approximately \$36.5 million, in excess of the target of 15% of General Fund expenditures.

YOUR TAX DOLLARS AT WORK



For every \$1.00 can of soda sold within the City of Riverside...

a penny of the sales tax flows to the City of Riverside.



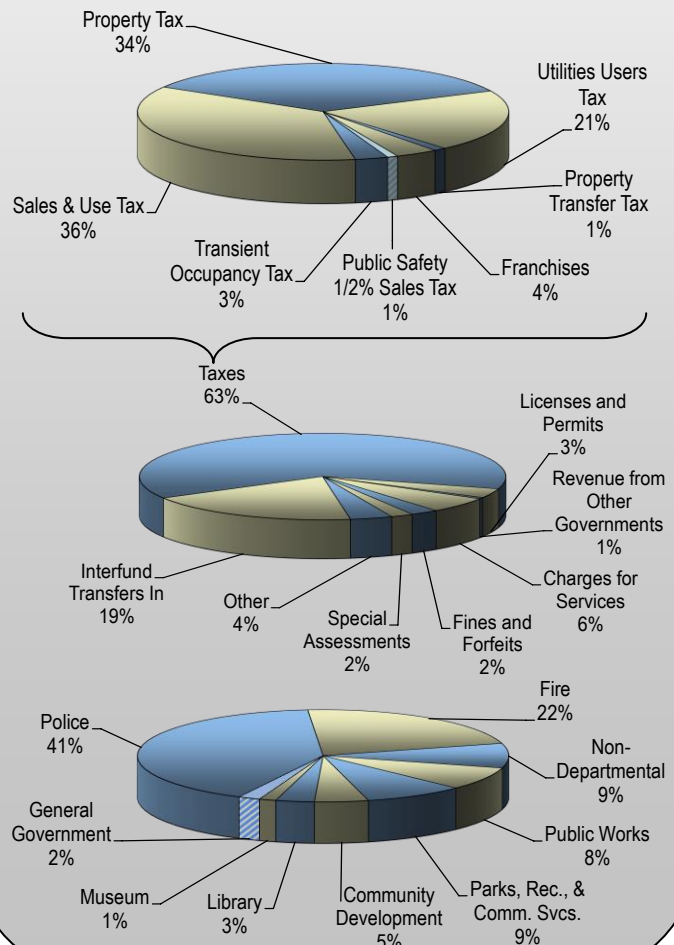
If 32 million cans of soda are sold this year within the City of Riverside...

the City could purchase a \$320,000 fire truck with the resulting sales tax revenue.

GENERAL FUND REVENUES AND EXPENDITURES

General Fund Revenues	
Sales & Use Taxes	52,823,000
Property Taxes	48,905,753
Utilities Users Tax	28,043,000
Charges for Services	12,796,884
Other Taxes	10,372,500
Licenses and Permits	7,735,760
Fines and Forfeits	5,516,144
Special Assessments	4,401,416
Revenue from Other Governments	1,195,000
Other	8,255,553
Interfund Transfers In	42,493,000
Total	222,538,010

General Fund Expenditures	
Police	93,567,917
Fire	49,929,791
Parks, Recreation, and Community Services	19,825,041
Non-Departmental	19,665,638
Public Works	18,165,078
Community Development	10,600,977
Library	7,594,729
General Government	4,307,543
Museum	3,313,296
Less: Managed Savings	(4,432,000)
Total	222,538,010



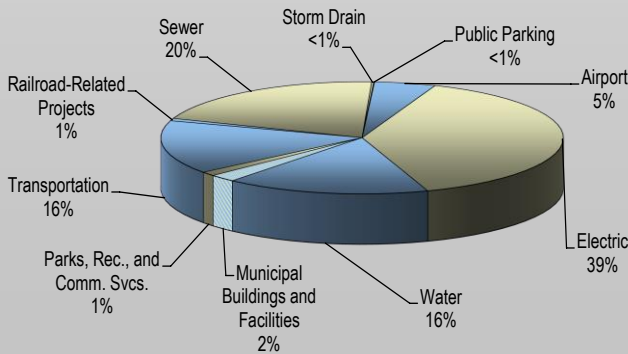
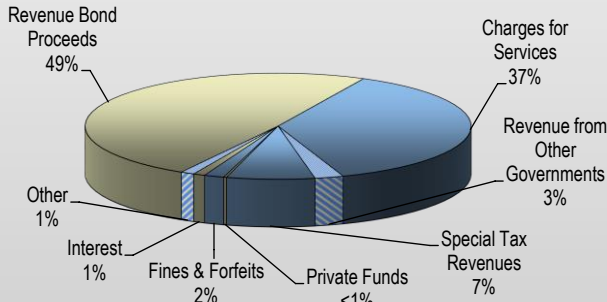
CIP REVENUES AND EXPENDITURES

Five Year CIP Revenues

Revenue Bond Proceeds	463,102,000
Charges for Services	351,871,134
Revenue from Other Governments	22,637,800
Special Tax Revenues	69,546,501
Private Funds	2,304,533
Fines & Forfeits	15,730,000
Interest	9,376,000
Other	10,774,837
Less: Amounts not Available for Current CIP	(496,898,189)
Total	448,444,616

Five Year CIP Expenditures

Sewer	90,475,000
Electric	174,038,000
Water	73,472,000
Transportation	69,310,000
Railroad-Related Projects	3,142,100
Airport	22,140,000
Municipal Buildings and Facilities	9,505,500
Parks, Recreation, and Community Services	5,362,016
Storm Drain	750,000
Public Parking	250,000
Refuse	-
Total	448,444,616



WHAT IS THE CIP?

The City's Capital Improvement Program (CIP) is a plan for the renovation, expansion, and repair of existing City facilities such as roads, bridges, government buildings, and parks and proposes new projects that will improve the quality of life for the citizens of the City. The CIP projects available funding over a five-year period. The highest priority projects are constructed first. Lower priority projects that have been identified but for which no current funding exists are categorized as unfunded.

The fiscal year 2013/14 funded CIP totals \$448.4 million, with an additional \$365.1 million remaining unfunded. The unfunded CIP is primarily used to catalog longer-term projects for which funding will be identified in the future. At the end of the five-year period outlined in the CIP, the City will see new or remodeled police and fire facilities, several new parks, an expanded Convention Center, additional railroad grade separations, and numerous other improvements. This is all in addition to the routine rehabilitation of streets, sewers, and other facilities that are always part of the CIP.

THE CIP AND THE ANNUAL BUDGET

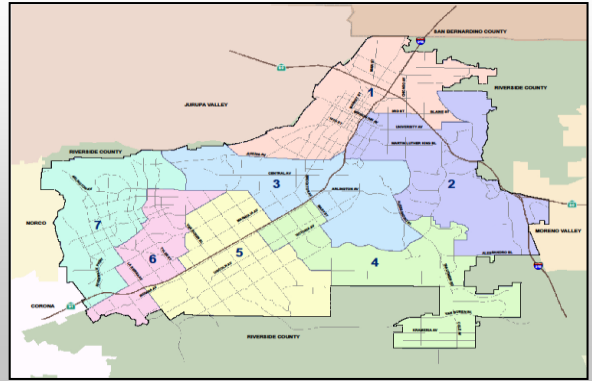
The CIP is developed separately from the City's annual budget in order to reap the benefits of focused attention paid to long-term planning for capital projects. The approval of the CIP does not signal appropriation of funds but rather serves as a planning instrument for budgeting and infrastructure development. Appropriations for capital projects are made when the City Council approves the annual budget for the City.

The first year's program in the CIP contains projects that are included in the proposed budget for fiscal year 2013/14. The remaining four years reflect staff's recommended priorities for the future and are reviewed and revised annually by the City Council.

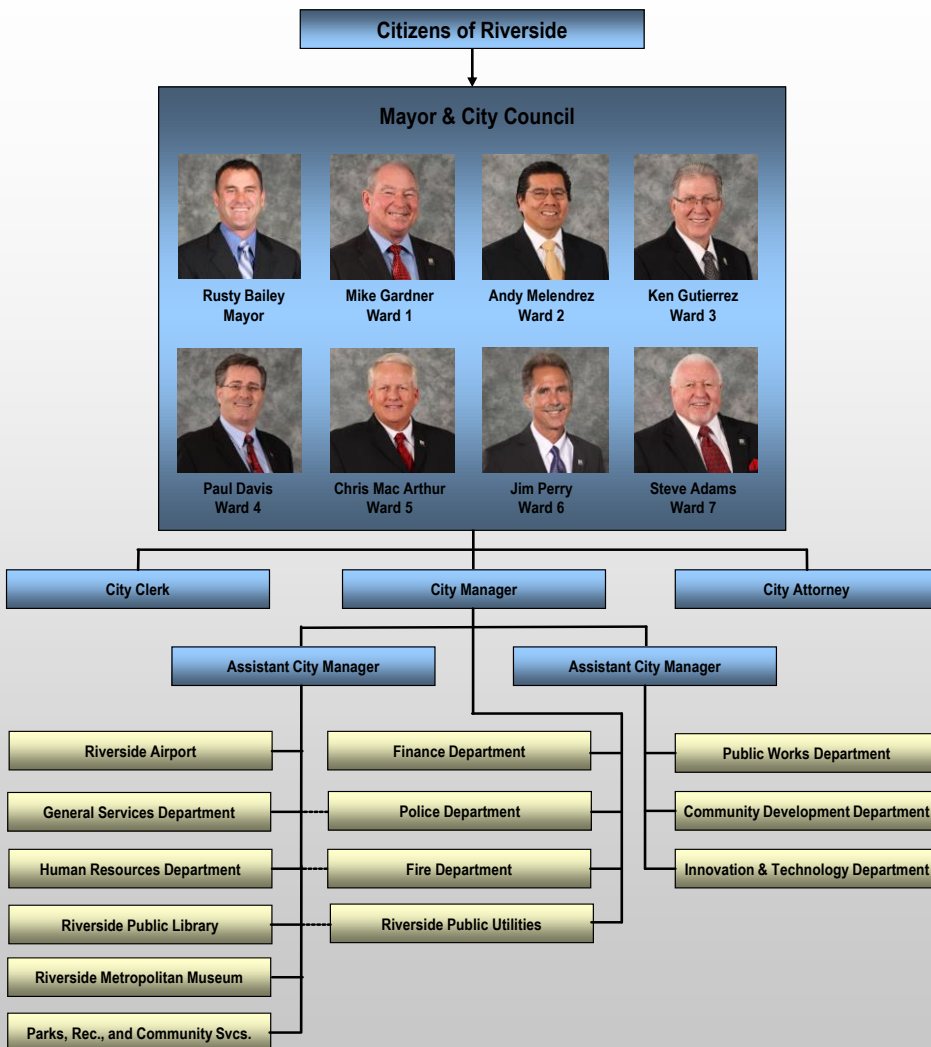
CITY PROFILE

Population	311,955
Area in Square Miles	81.44
Number of Fire Stations	14
Number of Police Stations & Storefronts	7
Number of Sworn Police Officers	360
Number of Libraries	8
Number of Parks	59
Number of Electric Meters	107,321
Number of Water Meters	64,367

CITY COUNCIL WARDS



CITYWIDE ORGANIZATIONAL CHART



3900 Main Street
Riverside, CA 92522

(951) 826-5311

www.riversideca.gov
callcenter@riversideca.gov

