

FIGURE 1
SEMI-FLUSH INSTALLATION

NOT TO SCALE

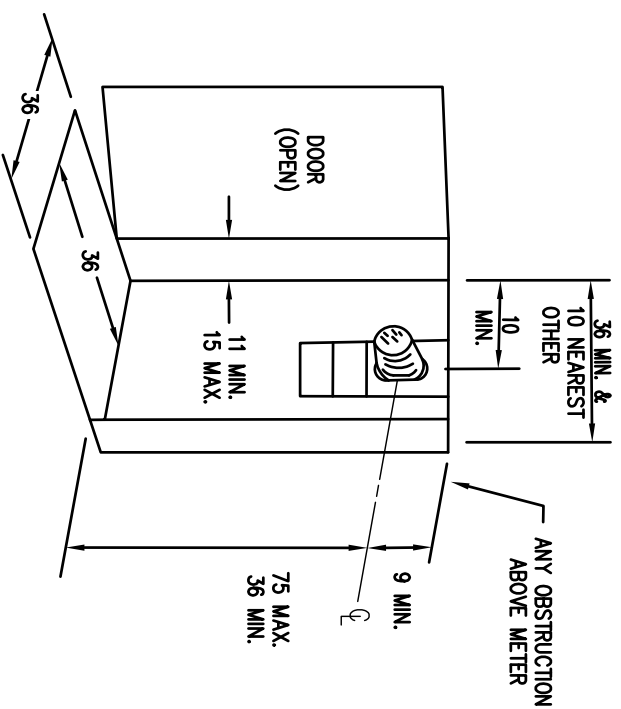


FIGURE 2
ENCLOSED INSTALLATION

NOTES:

1. Sockets with approved sealing rings shall be furnished, installed, and wired by the electrical contractor.
2. Care should be exercised to design cabinet such that neither the roof nor the door frame will interfere with the clearances or the installation of the meter.
3. Meter to be installed with 10 inch minimum clearance to the nearest side wall or other obstruction.

ALL DIMENSIONS SHOWN ARE IN INCHES

TYPICAL METER CLEARANCE		REVISION: △ SHT. 5 OF 5	
PROVIDE FOR REFERENCE ONLY			
DATE	5-9-2011	CHECKED BY	B. HARRIS
DRAWN	J. BECK	APPROVED	C. ANCHETA
CITY OF RIVERSIDE		DEPARTMENT OF PUBLIC UTILITIES	