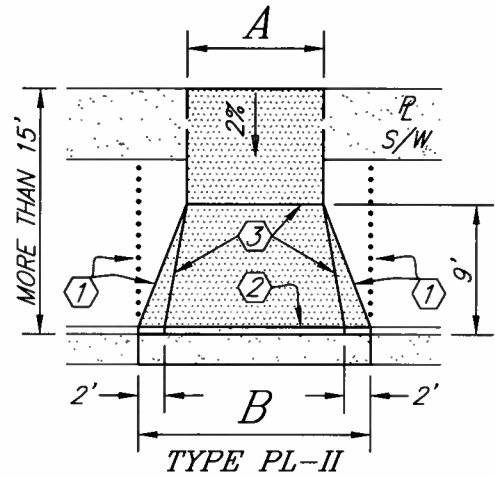
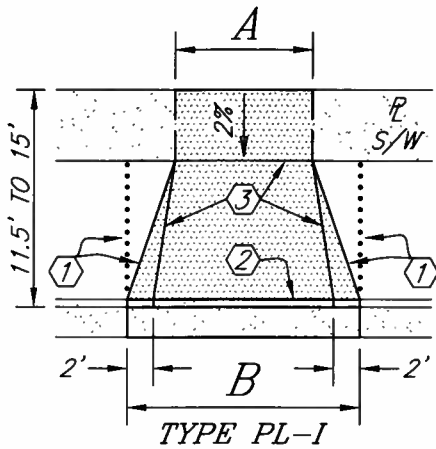
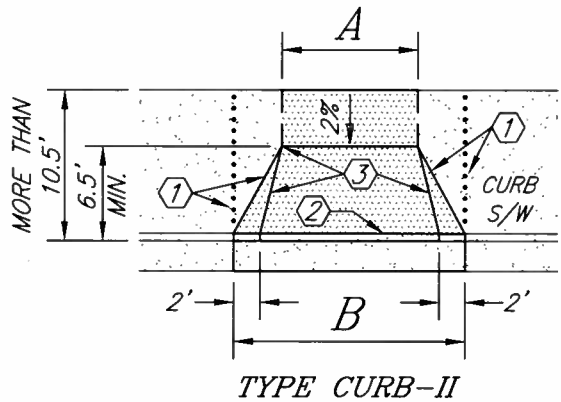
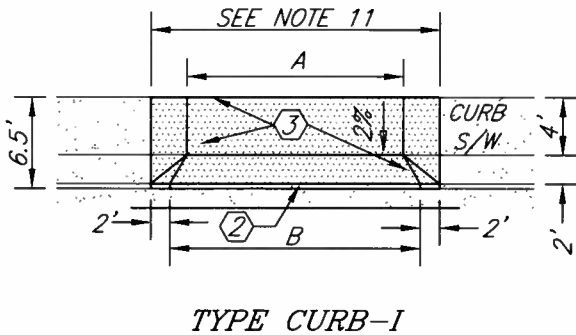


DRIVEWAY APPROACH WITH PROPERTY-LINE SIDEWALK



DRIVEWAY APPROACH WITH CURB SIDEWALK



 CONCRETE IN THE SHADED AREA SHALL BE AT LEAST 6" THICK.

- ① DOTTED LINE SHOWS OPTIONAL DRIVEWAY/SIDEWALK CONFIGURATION. WHEN THE OPTIONAL CONFIGURATION IS CHOSEN, THE ADDITIONAL CONCRETE SHALL BE AT LEAST 6" THICK.
- ② SCORE LINE OR COLD JOINT.
- ③ GRADE BREAK LINES SHALL BE PRECISE AND STRAIGHT. SCREEDS AND/OR FALSE FORMS MUST BE USED TO ACHIEVE PRECISE CONSTRUCTION.

APPROVED BY
[Signature]
CITY ENGINEER

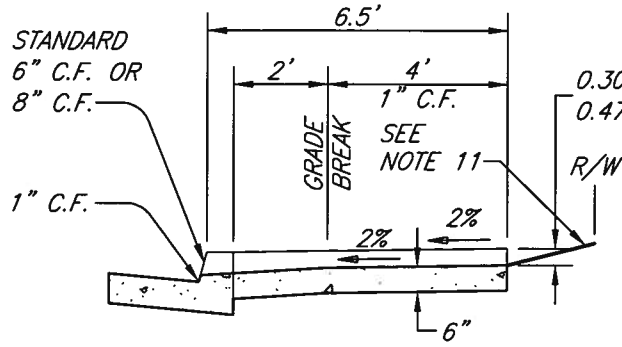
5/18/11
DATE

CITY OF RIVERSIDE
PUBLIC WORKS DEPARTMENT

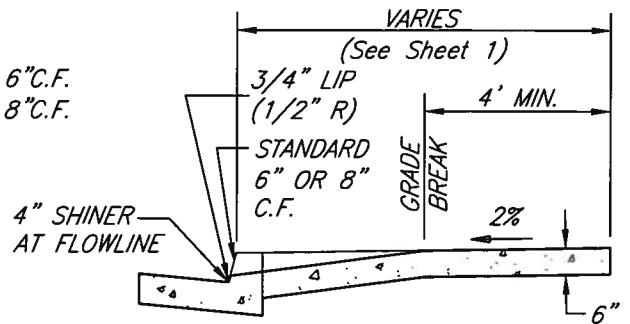
DRIVEWAY APPROACH

STANDARD DRAWING NO. 302

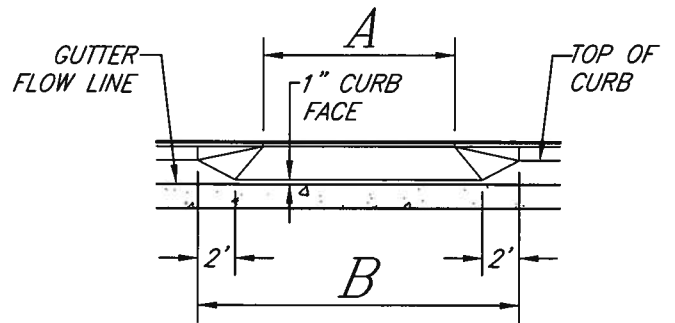
MARK	REVISIONS	APPR.	DATE



TYPE CURB-I



TYPES CURB-II, PL-I & PL-II



ELEVATION

DRIVEWAY APPROACH DIMENSIONS

LAND USE AND DRIVEWAY TYPE		A	B	B*
RESIDENTIAL (SINGLE OR DUPLEX)	SINGLE GARAGE	10' (MIN.)	(A+7')	A+14'
	DOUBLE GARAGE	20' (MAX.)		
	TRIPLE GARAGE	28'		
COMMERCIAL OR APARTMENT		30'	A+14'	A+18'
COMMERCIAL (JOINT)		36'		

* USE THIS "B" DIMENSION WHEN THE DRIVEWAY APPROACH IS ON A MAJOR STREET OR WHEN A DRIVING LANE IS ADJACENT TO THE CURB.

APPROVED BY

[Signature]
CITY ENGINEER

5/18/11
DATE

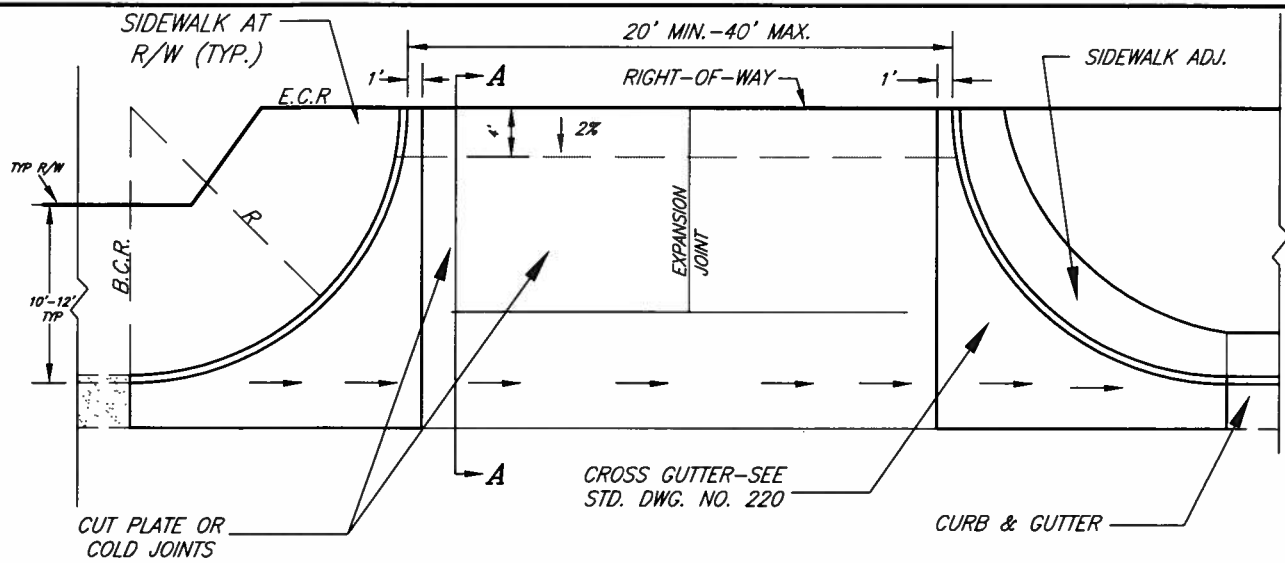
CITY OF RIVERSIDE
PUBLIC WORKS DEPARTMENT

DRIVEWAY APPROACH

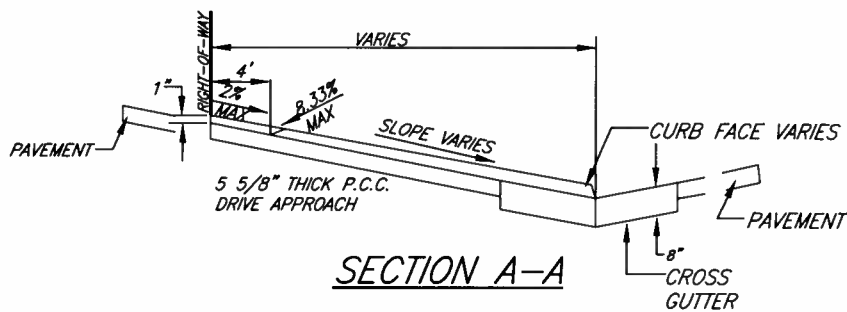
STANDARD DRAWING NO. 302

Sheet 2 of 4

MARK	REVISIONS	APPR.	DATE



PLAN VIEW



SECTION A-A

NOTES:

1. CURB RETURN RADII VARIES ACCORDING TO PARKWAY WIDTHS OR AS RECOMMENDED BY THE TRAFFIC ENGINEER.
2. SPECIAL DRIVE APPROACH SHALL BE USED FOR ALLEY ENTRANCE UNLESS OTHERWISE APPROVED BY THE CITY ENGINEER.
3. CONCRETE SHALL BE CLASS 560-C-3250 PER SECTION 201 OF THE STANDARD SPECIFICATIONS FOR PUBLIC WORKS CONSTRUCTION, CURED WITH TYPE 1-D CURING COMPOUND.
4. "R" DIMENSIONS SHALL BE ADEQUATE TO ACCOMMODATE TRUCK TURNING AS APPROVED BY CITY ENGINEER.
5. RIGHT OF WAY OR EASEMENT SHALL BE DEDICATED AS NECESSARY TO PROVIDE ADA ACCESS ACROSS DRIVEWAY.

APPROVED BY			
<i>[Signature]</i>		<i>5/18/11</i>	
CITY ENGINEER		DATE	
MARK	REVISIONS	APPR.	DATE

CITY OF RIVERSIDE
PUBLIC WORKS DEPARTMENT

DRIVEWAY APPROACH

STANDARD DRAWING NO. **302**

