



# IRRIGATION PLAN WEST PORTION LOW PARK

CITY OF RIVERSIDE - PARK & RECREATION DEPT.

SCALE - 1"=20'

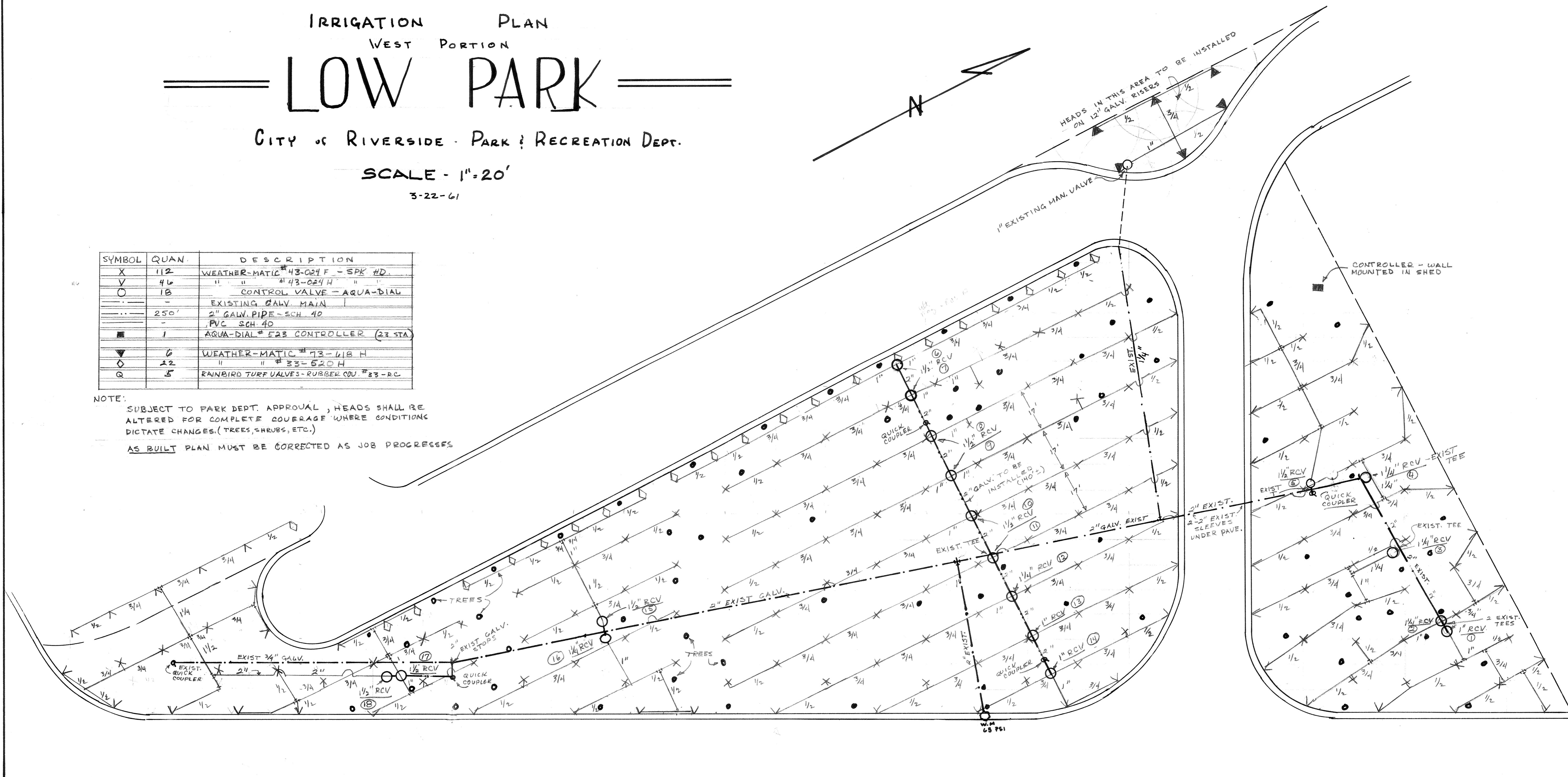
3-22-61

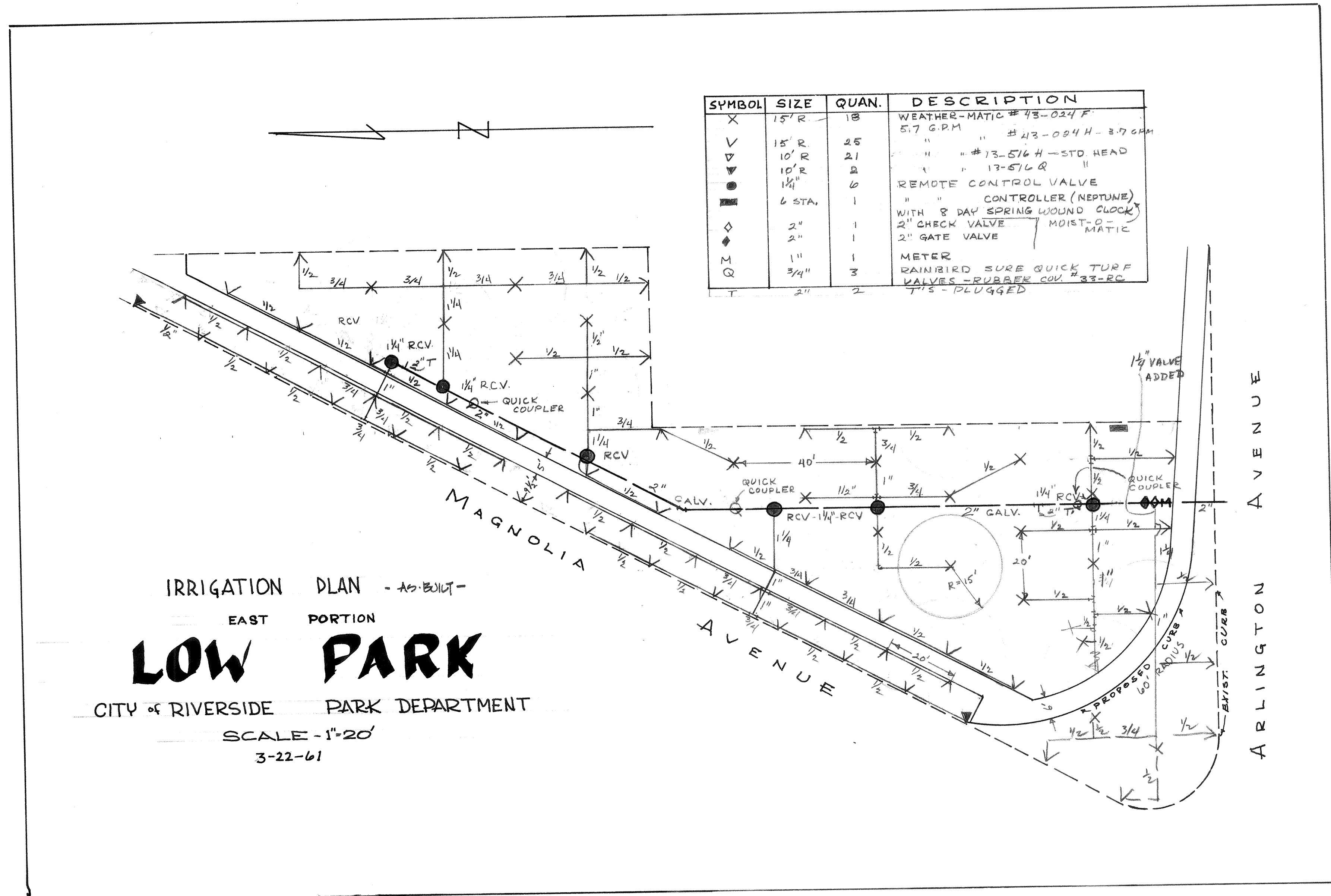
SYMBOL	QUAN.	DESCRIPTION
X	112	WEATHER-MATIC #43-024 F - SPK HD.
V	46	" " #43-024 H " "
O	18	CONTROL VALVE - AQUA-DIAL
-	-	EXISTING GALV. MAIN
---	250'	2" GALV. PIPE - SCH. 40
-	-	PVC SCH. 40
■	1	AQUA-DIAL # F28 CONTROLLER (23 STA)
▼	6	WEATHER-MATIC #73-418 H
◇	22	" " #33-520 H
Q	5	RAINBIRD TURF VALVES - RUBBER COV. #83-RC

**NOTE:**

SUBJECT TO PARK DEPT. APPROVAL, HEADS SHALL BE ALTERED FOR COMPLETE COVERAGE WHERE CONDITIONS DICTATE CHANGES. (TREES, SHRUBS, ETC.)

AS BUILT PLAN MUST BE CORRECTED AS JOB PROGRESSES





SYMBOL	SIZE	QUAN.	DESCRIPTION
X	15' R	18	WEATHER-MATIC #43-024 F 5.7 G.P.M.
∇	15' R	25	" " #43-024 H - 3.7 G.P.M.
▽	10' R	21	" " #13-516 H - STD HEAD
▼	10' R	8	" " 13-516 R "
●	1 1/4"	6	REMOTE CONTROL VALVE
■	6 STA.	1	" " CONTROLLER (NEPTUNE) WITH 8 DAY SPRING WOUND CLOCK
◇	2"	1	2" CHECK VALVE
◆	2"	1	2" GATE VALVE
Q	1"	1	METER
Q	3/4"	3	RAINBIRD SURE QUICK TURF VALVES - RUBBER COV. #33-RC
T	2"	2	T'S - PLUGGED

IRRIGATION PLAN - AS-BUILT -  
EAST PORTION  
**LOW PARK**  
CITY OF RIVERSIDE PARK DEPARTMENT  
SCALE - 1"=20'  
3-22-61

DRAWING NUMBER  
*Low*

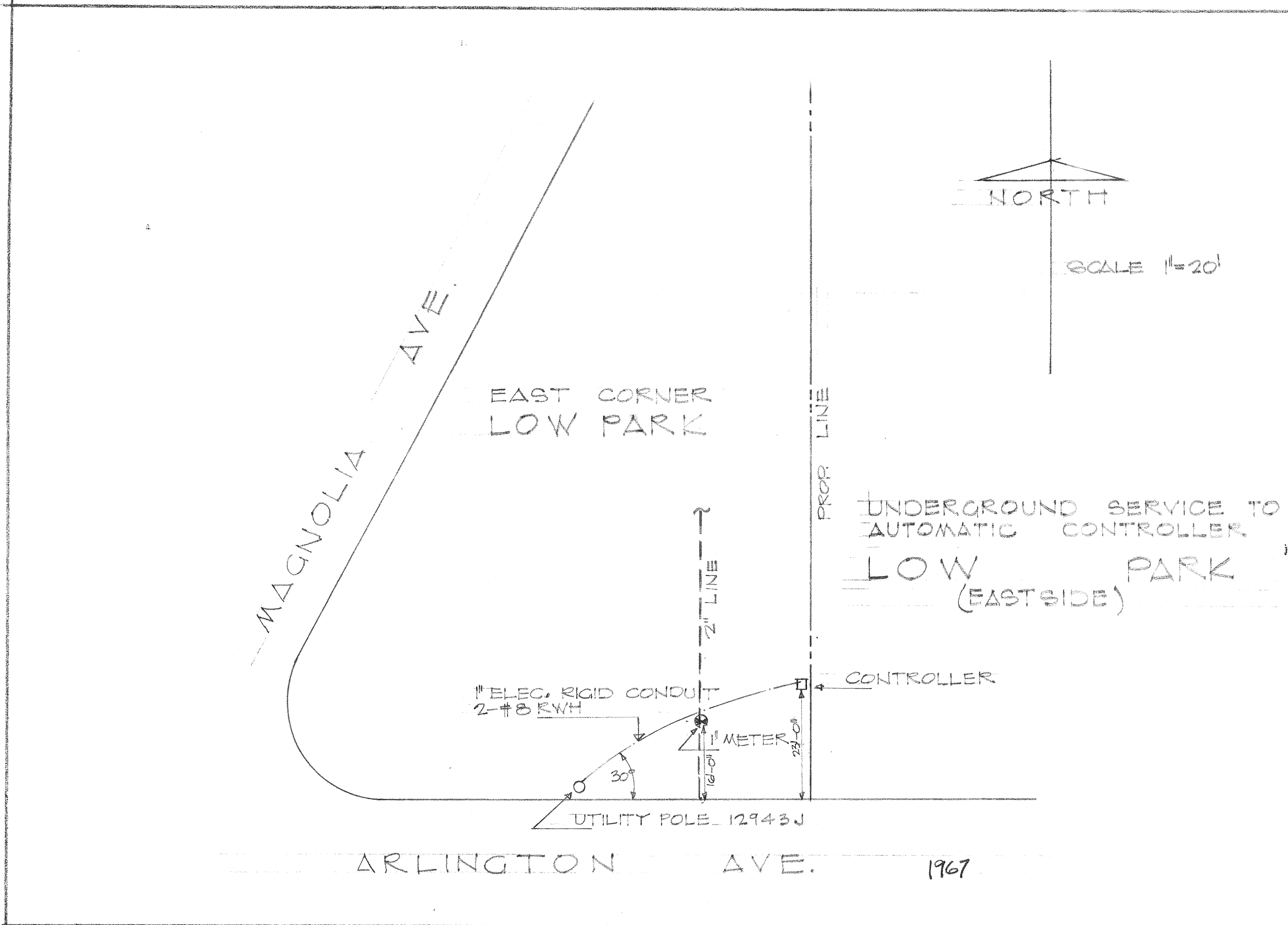
PLAN HOLD CORPORATION • IRVINE, CALIFORNIA  
REORDER BY NUMBER 075AR

DRAWING NUMBER  
**LO-09**

PLAN HOLD CORPORATION • IRVINE, CALIFORNIA  
REORDER BY NUMBER 075AR

DRAWING NUMBER

PLAN HOLD CORPORATION  
REORDER BY NUMBER



P-131-5