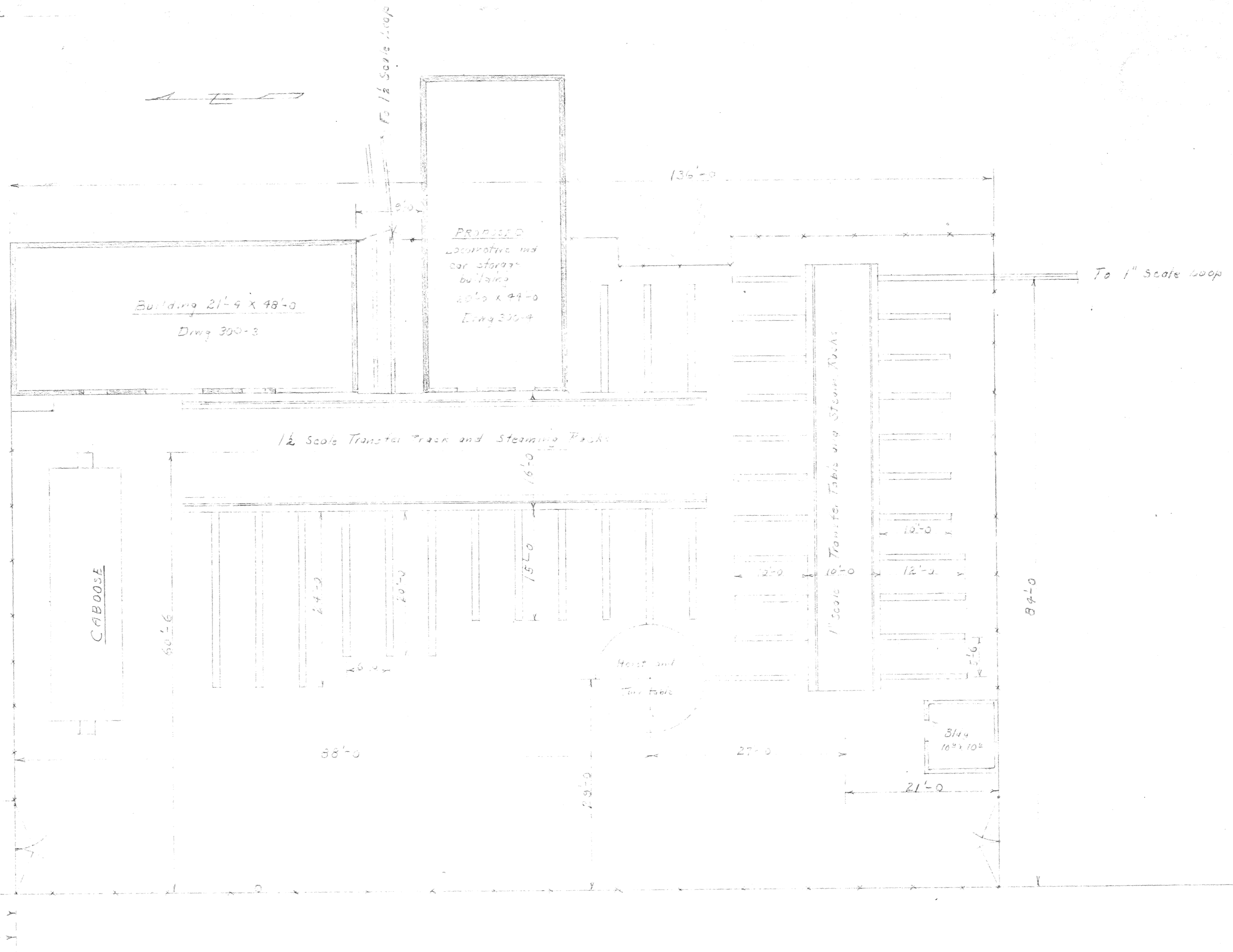


Iowa Ave

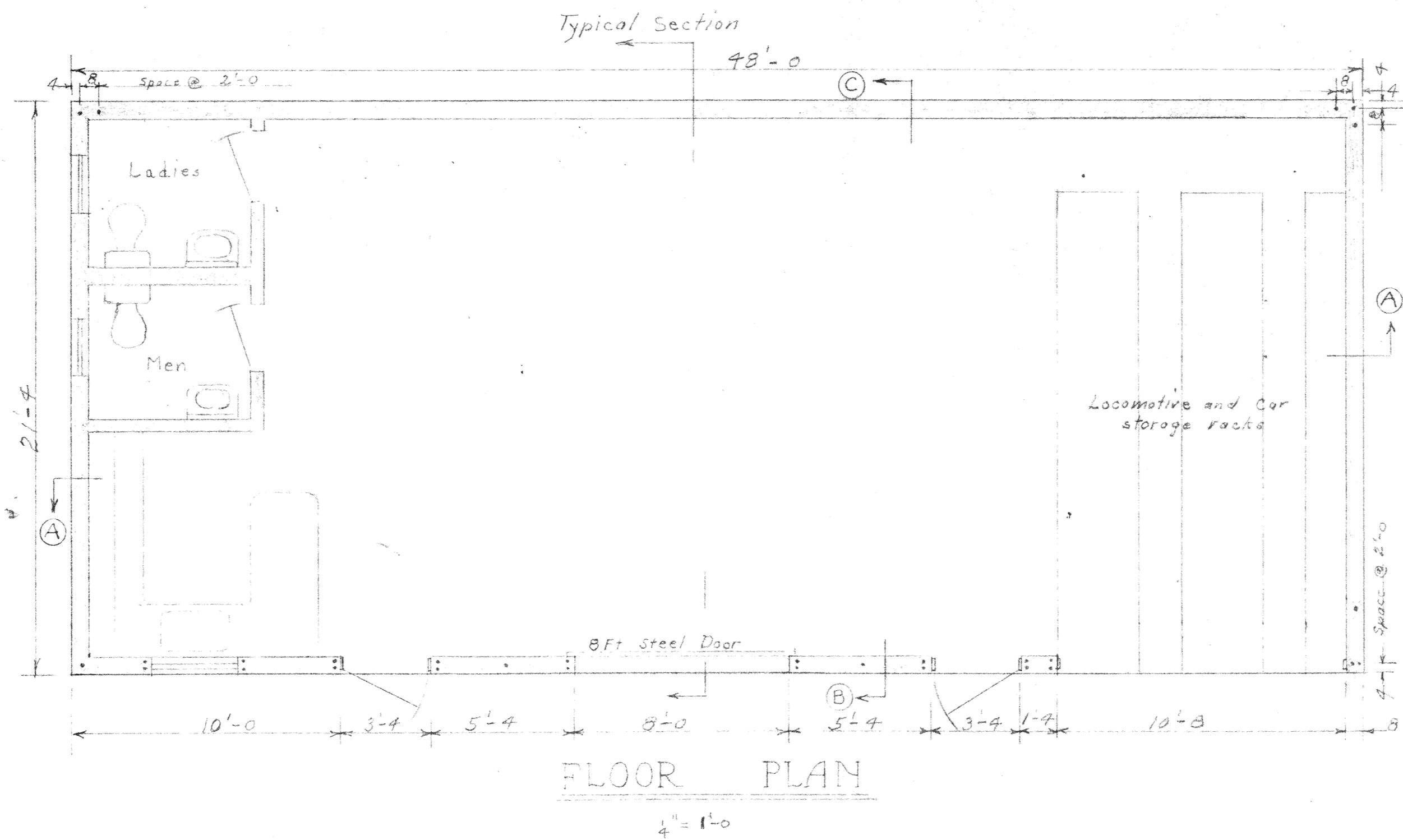
1203.15  
Columbia Ave



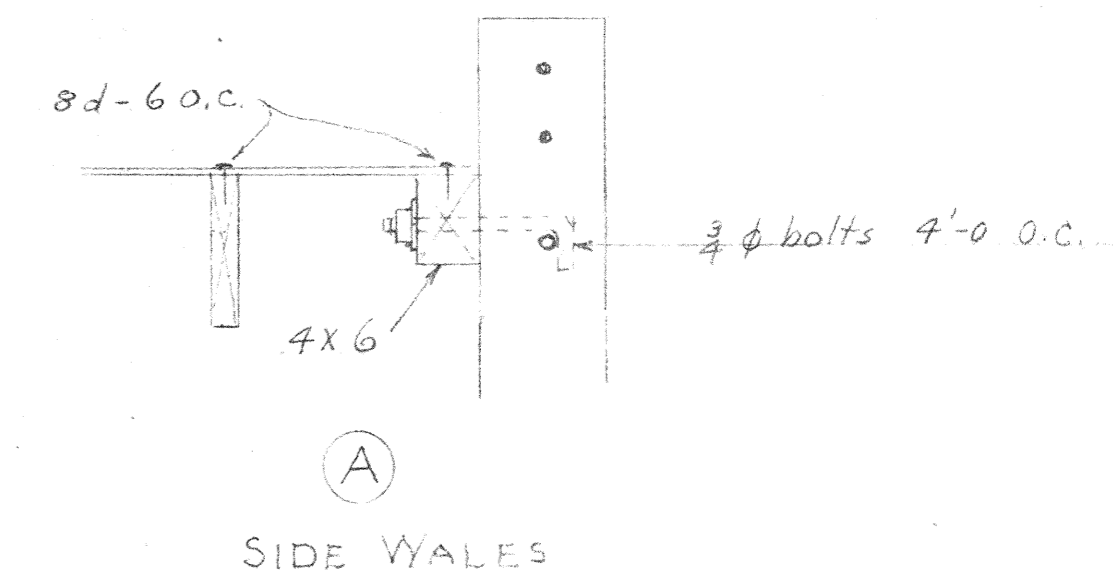
YARD LAYOUT  
 FOR  
 STEAMING AREA  
 RIVERSIDE LIVE STEAMERS INC.  
 HUNTER PARK

Scale 1" = 10ft  
 May 27, 1966  
 Rev. 2-6-67  
 Rev. 7-19-73  
 JNK

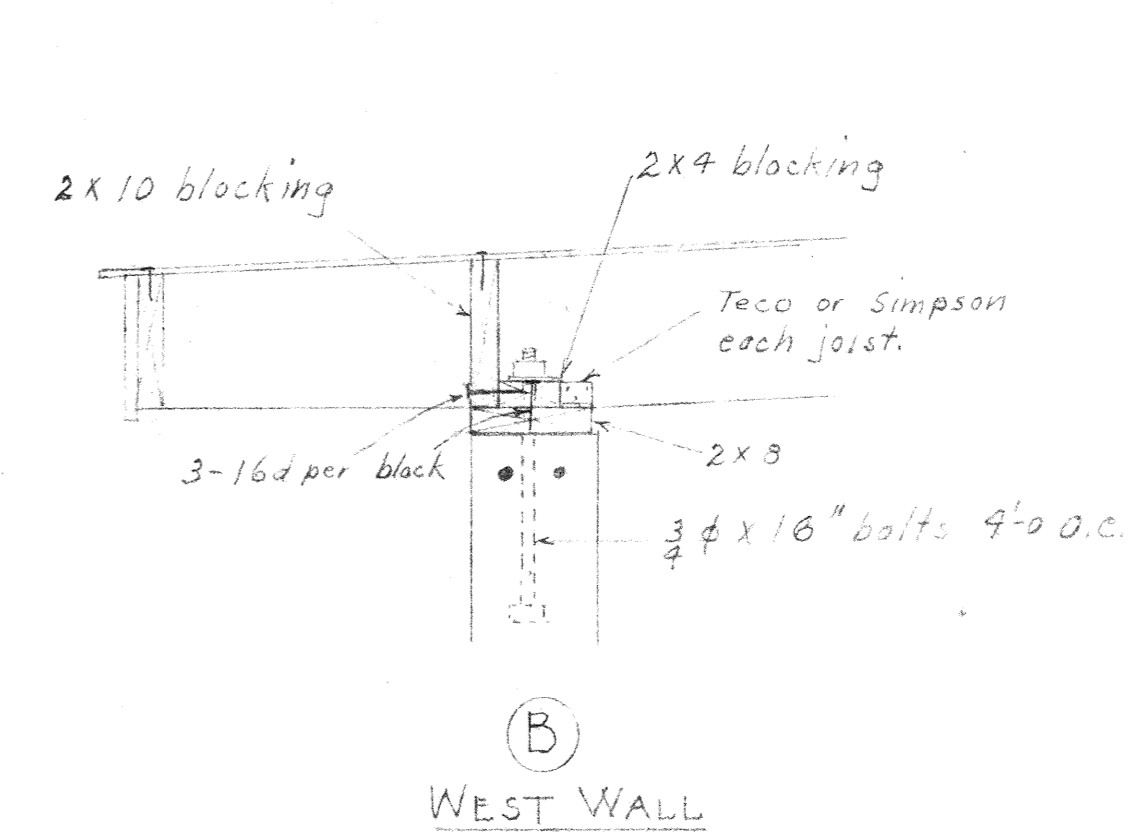
300-2



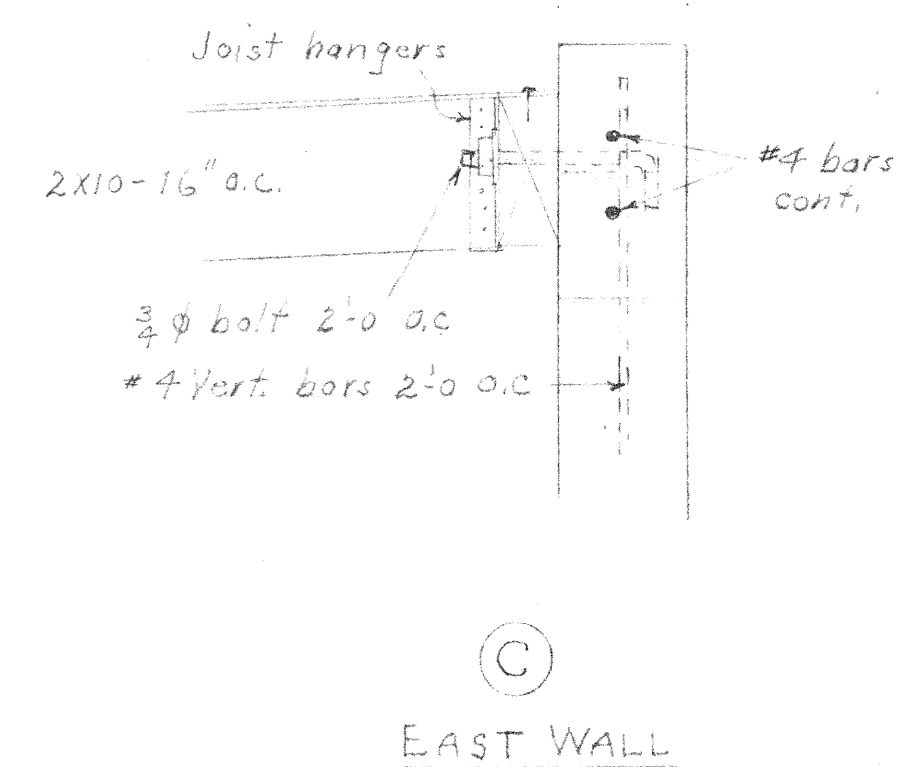
FLOOR PLAN  
1/4" = 1'-0"



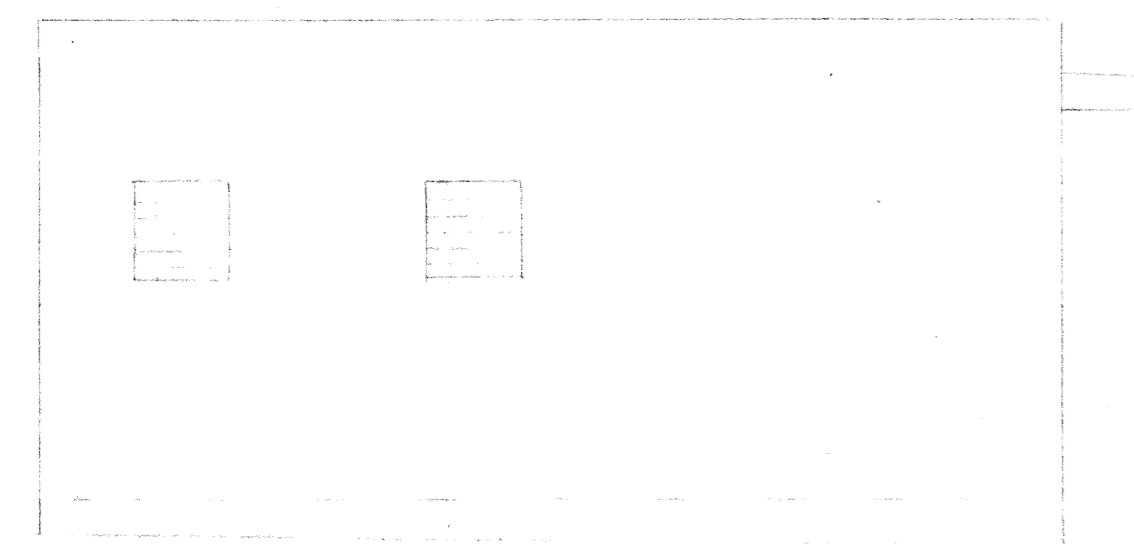
(A) SIDE WALES



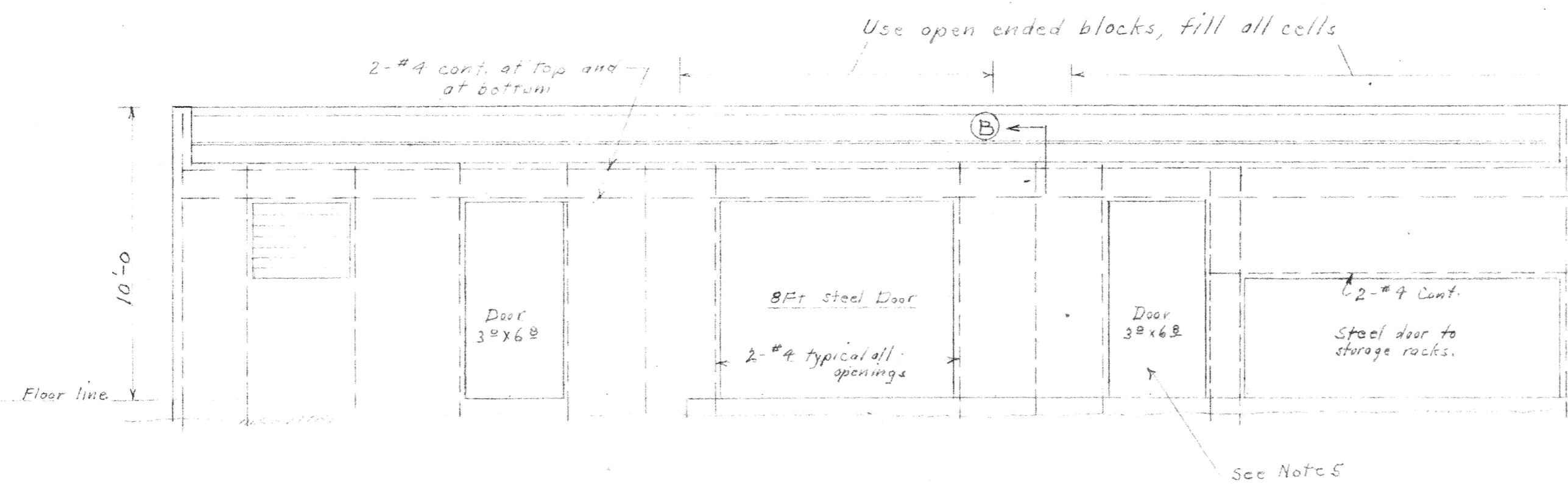
(B) WEST WALL



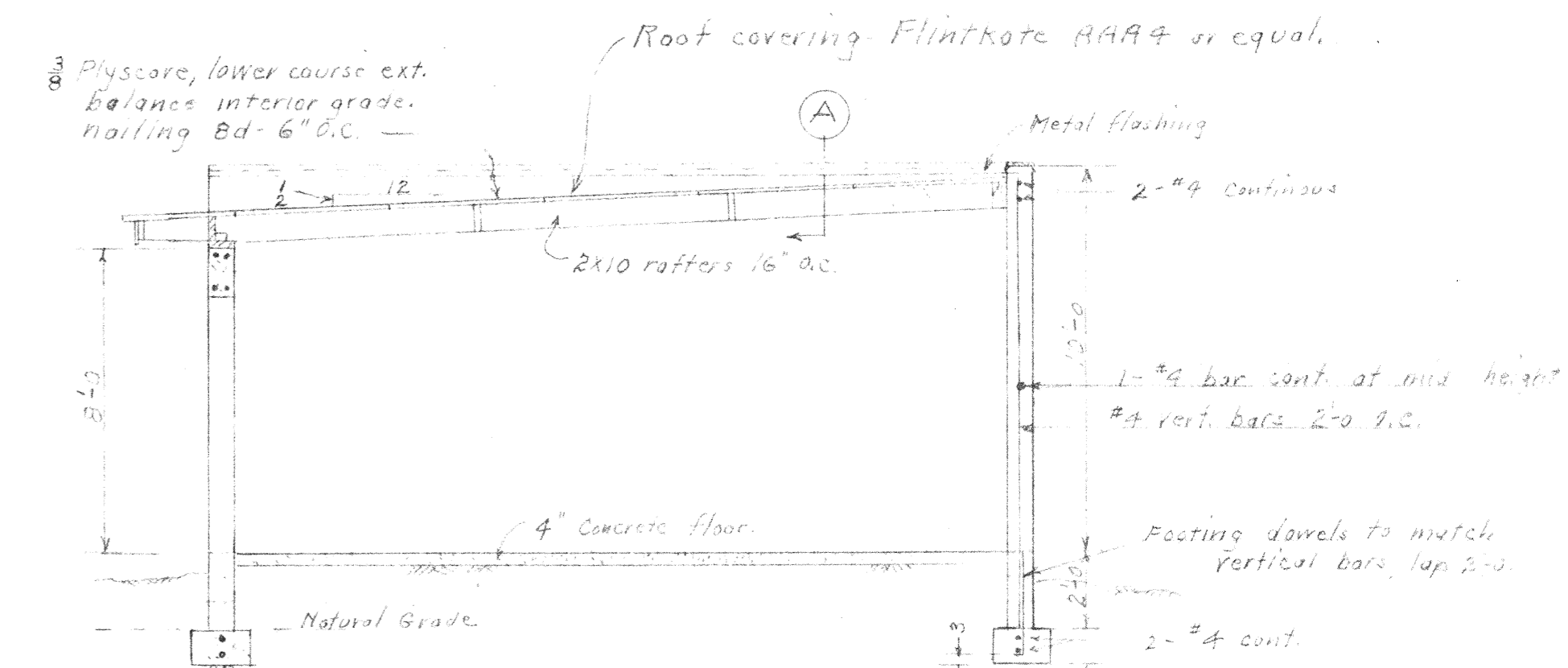
(C) EAST WALL



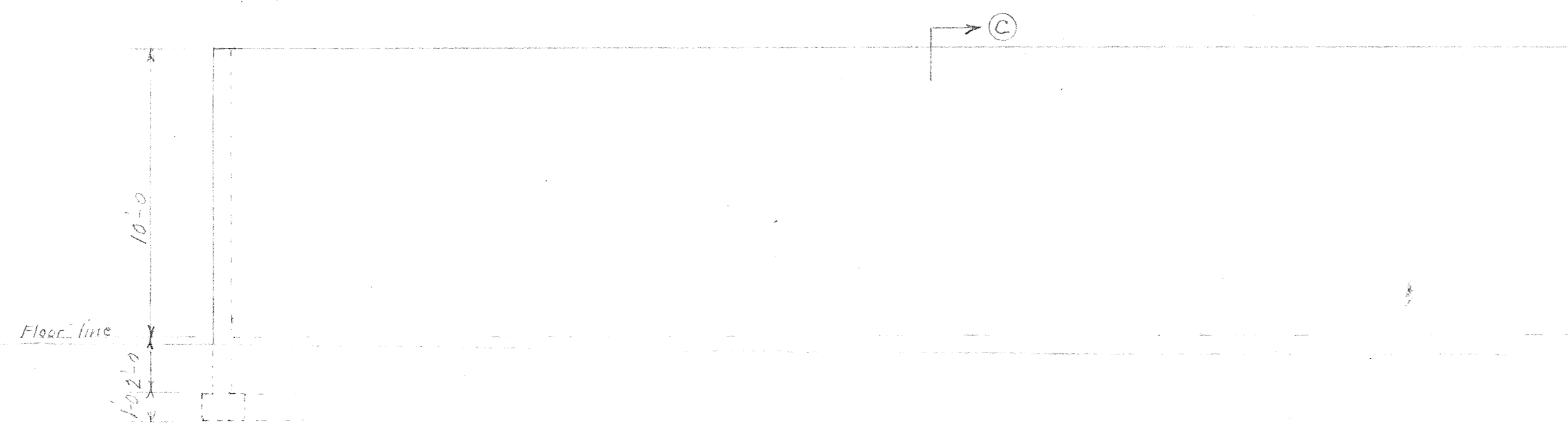
NORTH ELEVATION



WEST ELEVATION  
1/4" = 1'-0"



TYPICAL SECTION  
1/4" = 1'-0"



EAST ELEVATION  
1/4" = 1'-0"

General Notes

1. Soil: Sandy loam - allowable soil pressure 12,000 lbs/sq. ft.
2. Concrete: f'c 2000
3. Masonry: All units shall be 8x8x16 or 8 gauge A colored units. Color to be as selected. Fill all cells containing reinforcing steel as shown on elevation. Grout to be 1 part Portland cement to 3 parts sand.
4. Reinforcing Steel: All bars are size #4 and are to have a min. lap of 2'-0" at all joints.
5. Doors and windows: The two 3'-0" doors are to be 1 1/2" solid wood core with metal frames. The 8'-0" door is to be a sectional overhead rolling steel type. Windows are to metal frame type.

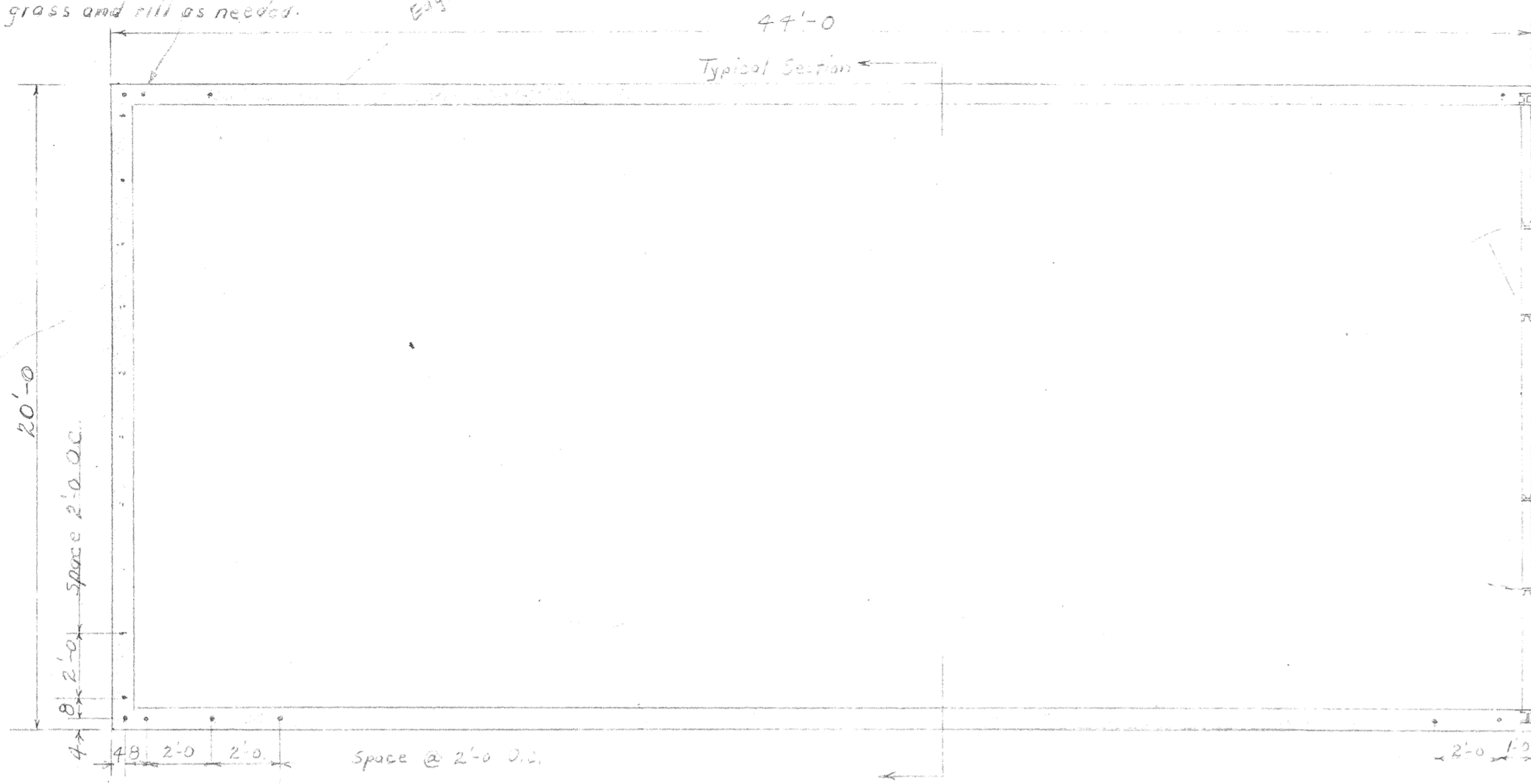
R.I.S. BUILDING  
HUNTER PARK

Riverside Live Steamers Inc.  
RIVERSIDE CALIF.

NO.	REVISIONS	BY	DATE	APPRO.	REFERENCES	DRAWING SIZE
1					Yard Layout	300-2
2						
3						
4						
5						

SCALE: 1/4" = 1'-0"	DRAWN: MKR	C. K.	DRAWING NUMBER: 300-3
DATE: 10/19/27	TRACED:	APPROVED: MKR	
CHECKED:			

Increase depth of found.  
12"-15" as required in ditch area.  
Clean off grass and fill as needed.



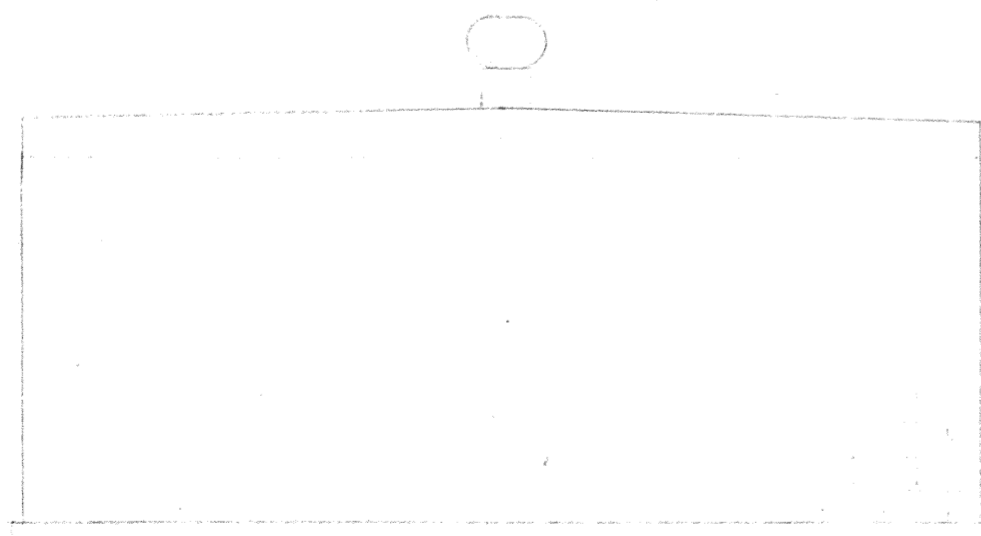
FLOOR PLAN

Scale  $\frac{1}{4}'' = 1'-0''$



NORTH ELEVATION

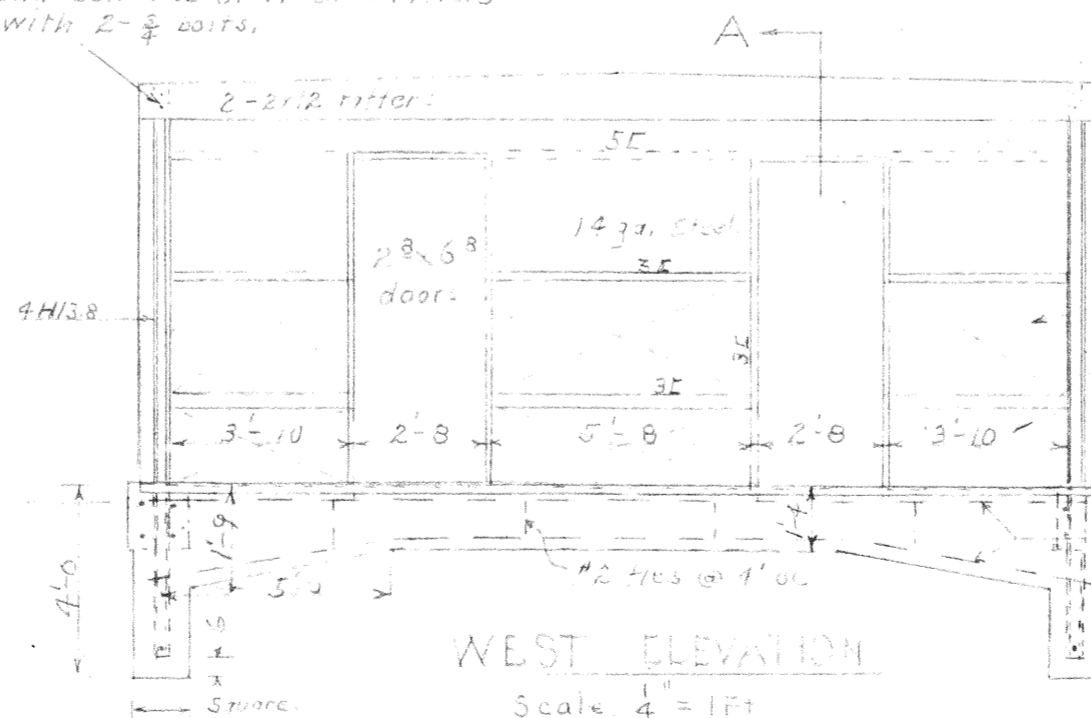
Scale  $\frac{1}{4}'' = 1'-0''$



EAST ELEVATION

Scale  $\frac{1}{4}'' = 1'-0''$

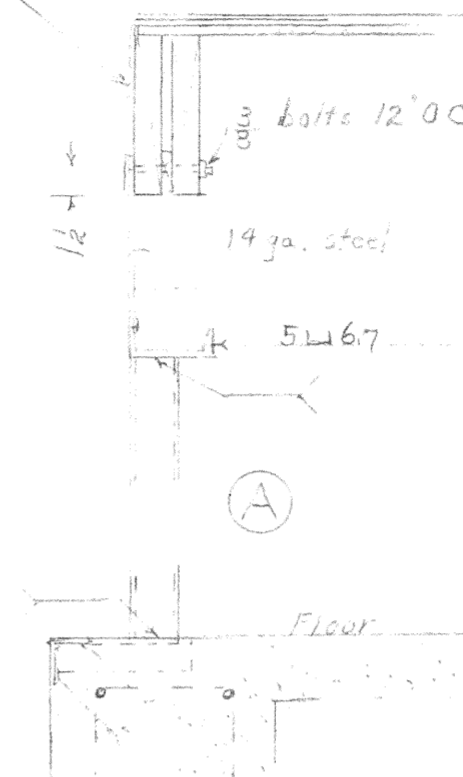
cut-off flanges extend web and bolt web of H. col. in rafters with 2- $\frac{5}{8}$  bolts.



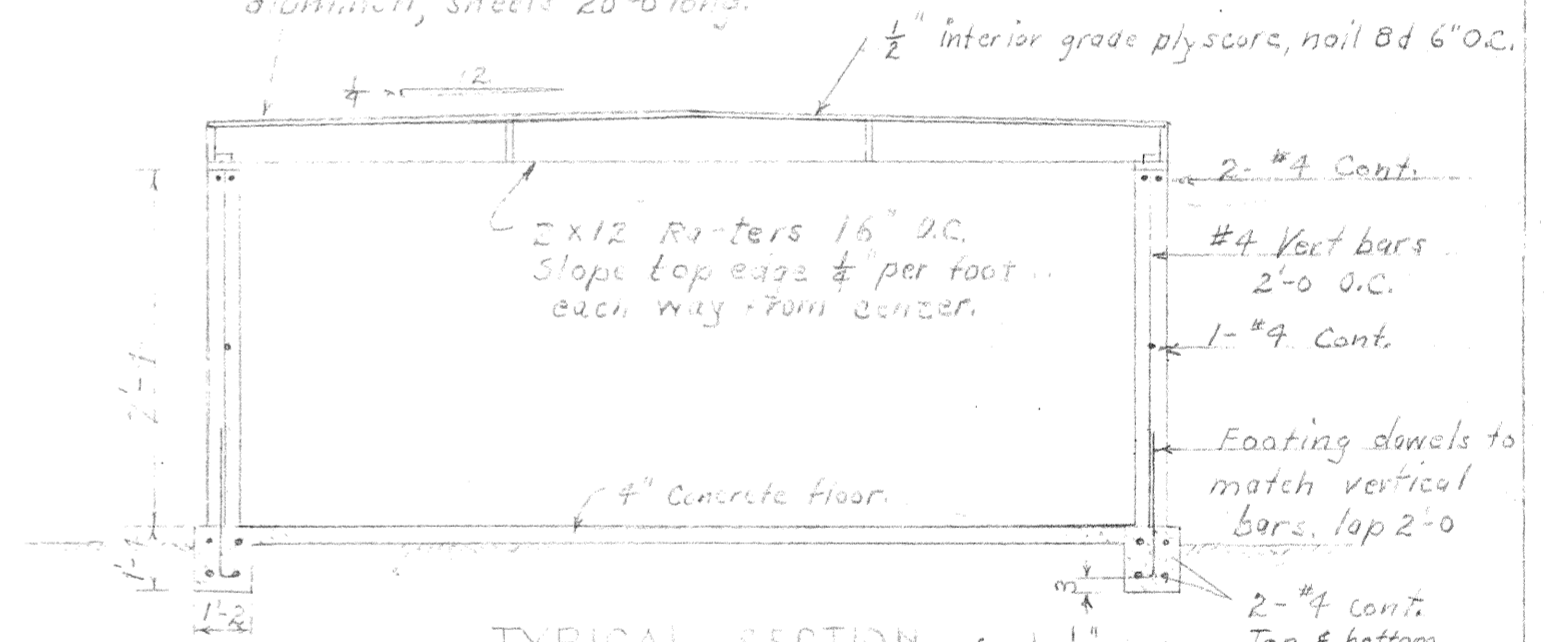
WEST ELEVATION

Scale  $\frac{1}{4}'' = 1'-0''$

Flange all around 24" wide slant.



Roof covering - .019 thick aluminum, sheets 20'-0" long.



TYPICAL SECTION Scale  $\frac{1}{4}'' = 1'-0''$

GENERAL NOTES

1. Soil - sandy loam, allowable soil pressure 1200 lbs per sq. ft.
2. Concrete -  $f_c = 2000 \#$
3. Masonry - All units shall be 8x8x16 or B Grade A with color to match existing building. Fill all units containing reinforcing steel. Grout to be 1 part Portland cement to 3 parts sand.
4. Reinforcing Steel - All bars are to be #4 and are to have a min. lap of 2'-0" at all joints.
5. All steel west wall to be fabricated by Riverside Live Steamers.

LOCOMOTIVE AND CAR STORAGE BUILDING

CAPACITY - 680 FT OF STORAGE TRACK  
HUNTER PARK

Riverside Live Steamers Inc.  
RIVERSIDE CALIF.

SCALE $\frac{1}{4}'' = 1'-0''$	DRAWN JNK:RJK	APPROVED FOR Bd. of Directors Oderanford	DRAWING NUMBER 300-4
DATE April 19, 1973	CHKD RJK	Pres.	