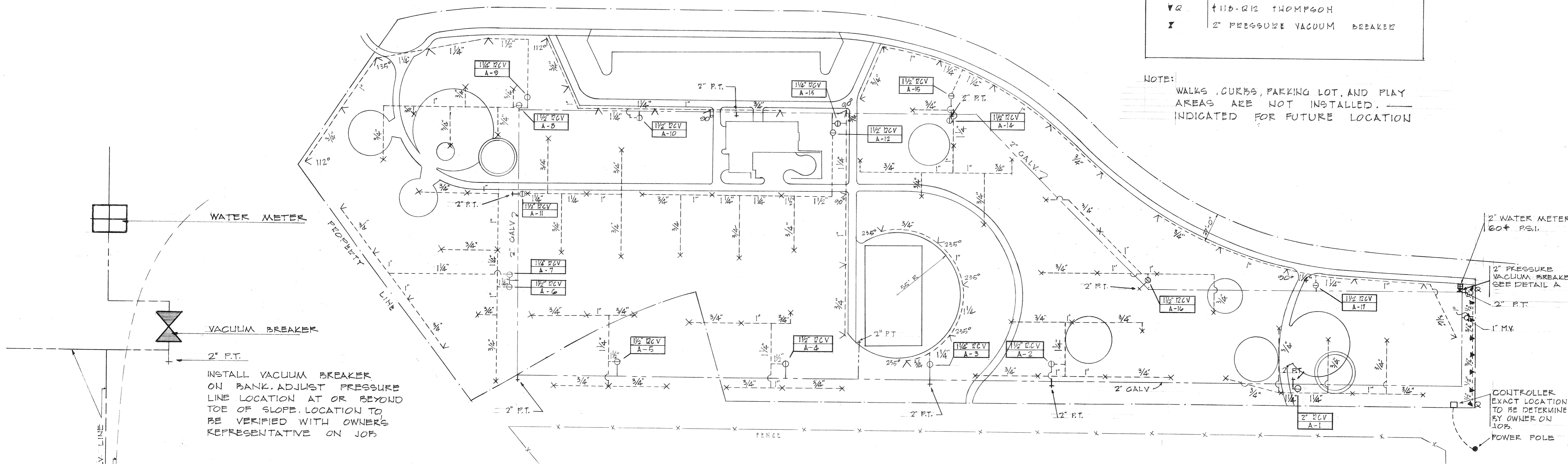


SPRINKLER LEGEND

X	#602F WEATHERMATIC TURBO-JET
V	#602FC WEATHERMATIC TURBO-JET 182° UNLESS OTHERWISE INDICATED
▼	#118-H12 THOMPSON
▼Q	#118-Q12 THOMPSON
⊗	2" PRESSURE VACUUM BREAKER

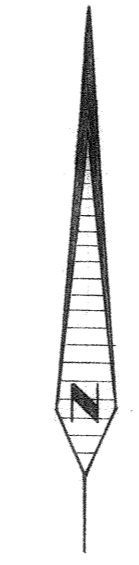
NOTE:
 WALKS, CURBS, PARKING LOT, AND PLAY
 AREAS ARE NOT INSTALLED.
 INDICATED FOR FUTURE LOCATION



DETAIL A
 VACUUM BREAKER LOCATION
 NO. SCALE

PIPE AND VALVE LEGEND

---	SCHEDULE 40 GALVANIZED
----	P.V.C. # 160 CLASS
2" P.T.	2" PLUGGED TEE
○ RCV.	REMOTE CONTROL VALVE, SIZE AS INDICATED. TELSCO # 8024 A SERIES WITH FLOW CONTROL ADJUSTER
○ M.V.	MANUAL VALVE
□	CONTROLLER- TELSCO EVM17-24



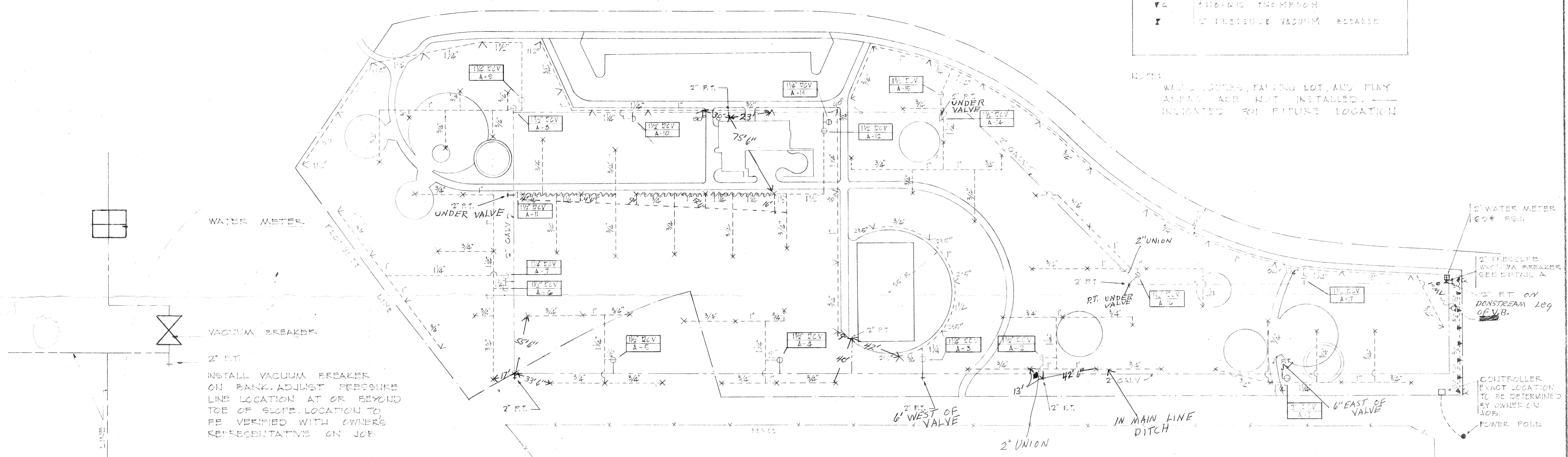
SPRINKLER PLAN
 HIGHLAND PARK

RIVERSIDE, CALIFORNIA
 SCALE 1"=40' DATE: 8-12-66

SPRINKLER LEGEND

X	#100 EP WEATHERMATIC TURBO-JET
V	#60 EPD WEATHERMATIC TURBO-JET #60 UNLESS OTHERWISE INDICATED
▼	#113-115 THOMPSON
▼	#116-118 THOMPSON
⊠	2" PRESSURE VACUUM BREAKER

NOTE:
WALK, LOUNGE, FAIRING LOT, AND PLAY
AREAS ARE NOT INSTALLED. —
INDICATED FOR FUTURE LOCATION



WATER METER

VACUUM BREAKER

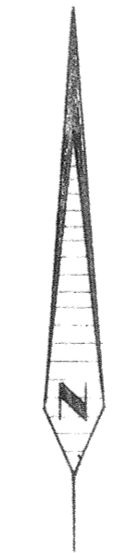
2" FT.
INSTALL VACUUM BREAKER
ON BANK. ADJUST PRESSURE
LINE LOCATION AT OR BEYOND
TOE OF SLOPE. LOCATION TO
BE VERIFIED WITH OWNERS
REPRESENTATIVE ON JOB

DETAIL A
VACUUM BREAKER LOCATION
NO. SCALE

PIPE AND VALVE LEGEND

---	SCHEDULE 40 GALVANIZED
----	PVC # 100 CLASS
2" P.T.	2" PLUGGED TEE
○ R.C.V.	REMOTE CONTROL VALVE, SIZE AS INDICATED. TELSCO # 8024 A SERIES WITH FLOW CONTROL ADJUSTED
○ M.V.	MANUAL VALVE
□	CONTROLLER - TELSCO EV#17-24

S P R I N K L E R P L A N



SPRINKLER PLAN
HIGHLAND PARK

RIVERSIDE, CALIFORNIA
SCALE 1"=40' DATE: 3-12-66

AS BUILT
S.C.I.
12-30-66

