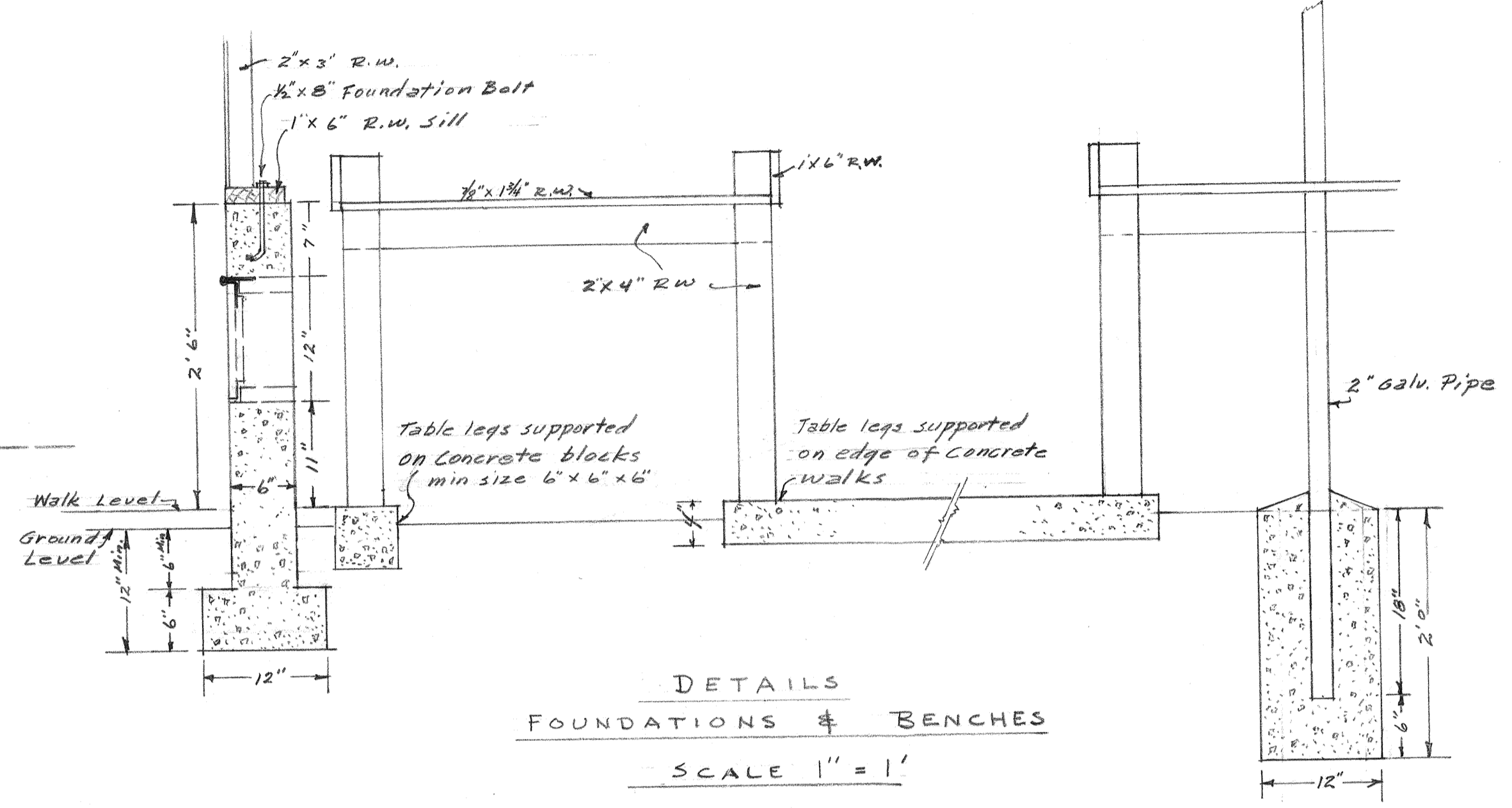


PLAN

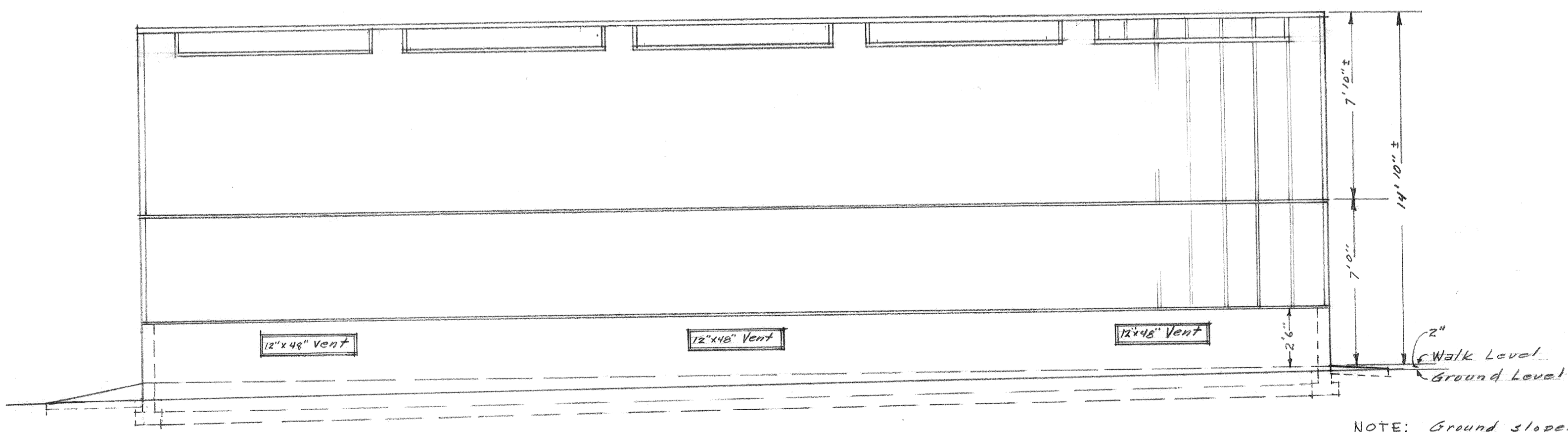


DETAILS
FOUNDATIONS & BENCHES
SCALE 1" = 1'

GREENHOUSE
CITY OF RIVERSIDE
PARK DEPARTMENT
RIVERSIDE, CALIF.

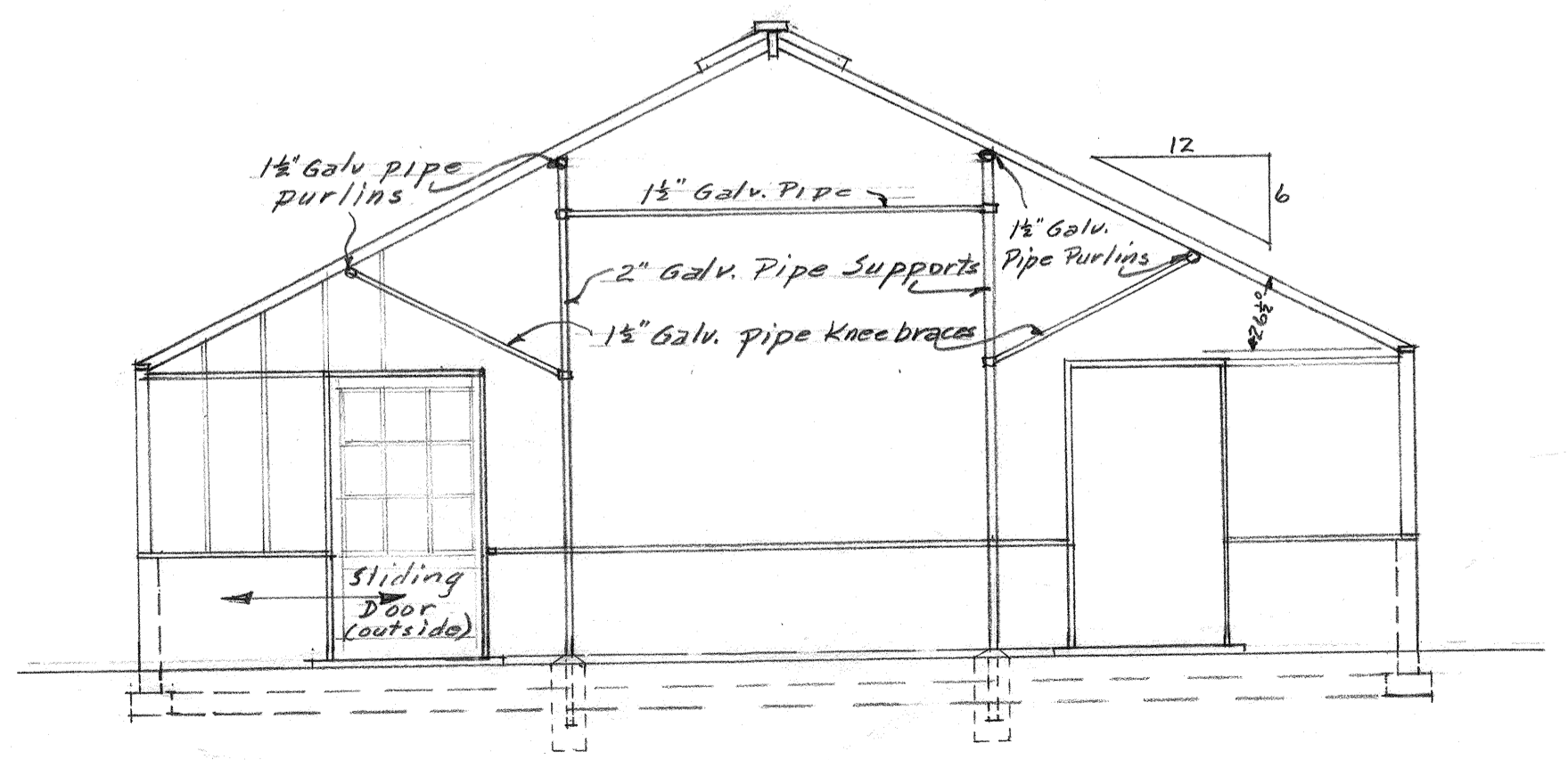
SCALE 1/4" = 1' Except where noted.

DATE: SEPT. 26, 1951



SIDE ELEVATION

NOTE: Ground slopes approx. 6" in 50' at site location in length of house, Approx. level in width



END ELEVATION & SECTION

