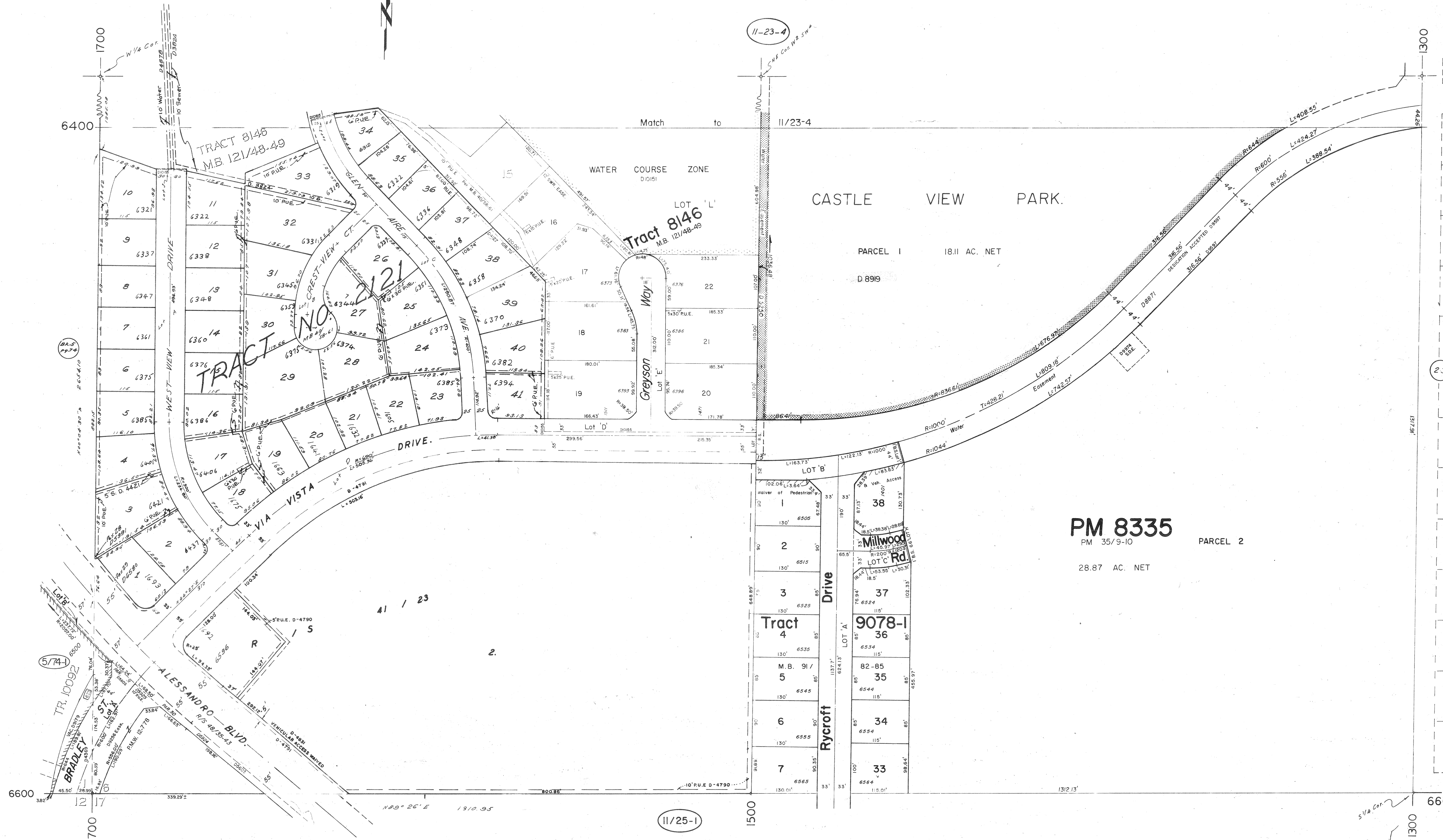


1 inch = 100 feet

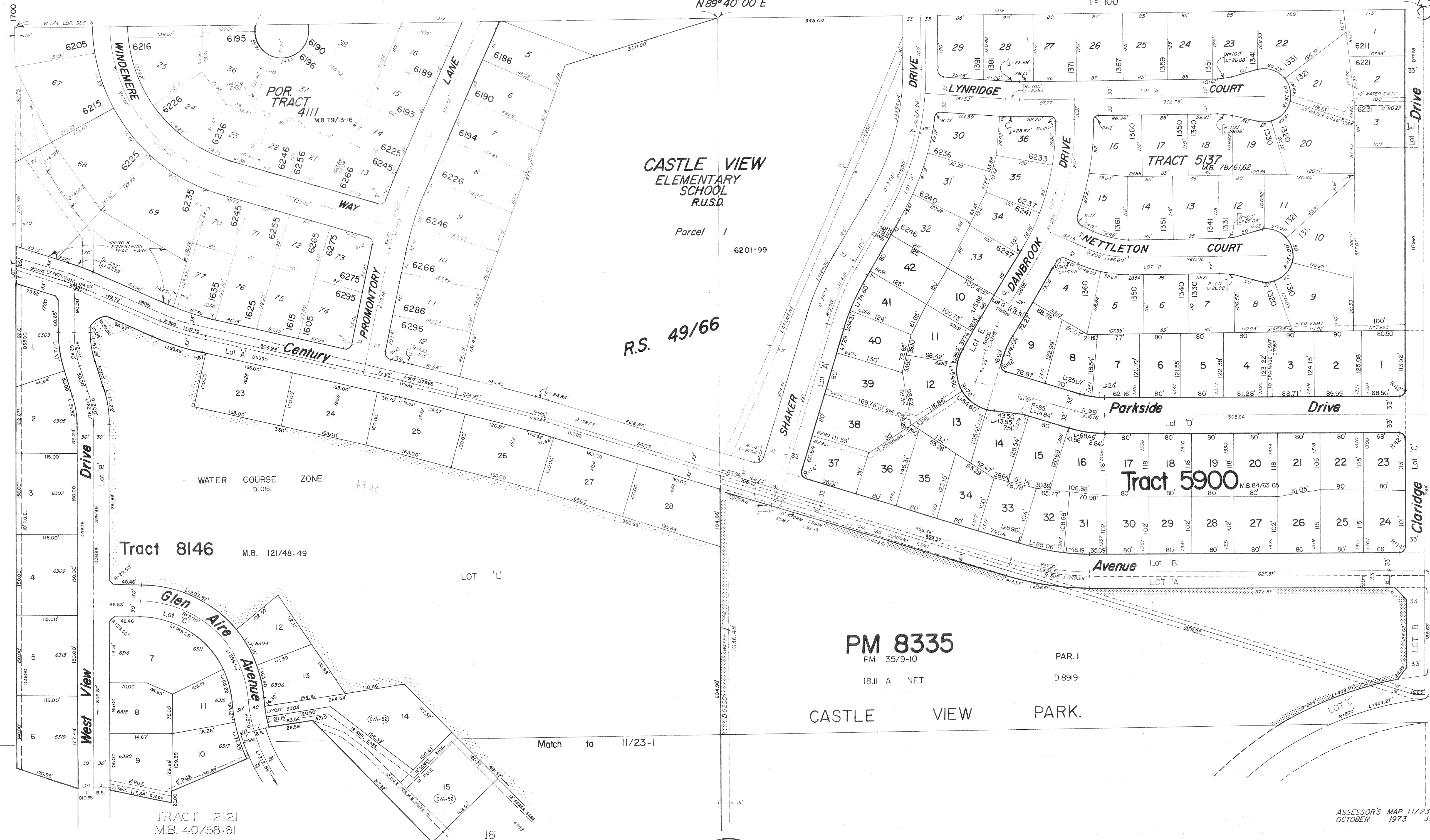
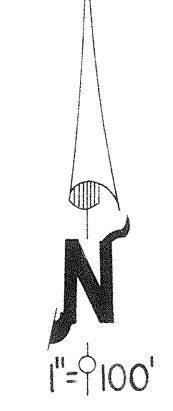


**PM 8335**  
 PM 35/9-10 PARCEL 2  
 28.87 AC. NET

Assessor's Map 11-23-1  
 Riverside County  
 Aug. 1960 M.  
 1965d

TRACT NO. 3824

11-23-3  
1500  
N 89° 40' 00" E



CASTLE VIEW  
ELEMENTARY  
SCHOOL  
R.U.S.D.

Parcel 1

6201-99

R.S. 49/66

PM 8335

PM 35/9-10

PAR. I

18.11 A NET

D 8919

CASTLE VIEW PARK.

Match to 11/23-1

TRACT 2121  
M.B. 40/58-61

ASSESSOR'S MAP 11/23-4  
OCTOBER 1973 J.V.

5-74

11-23

6400

6200