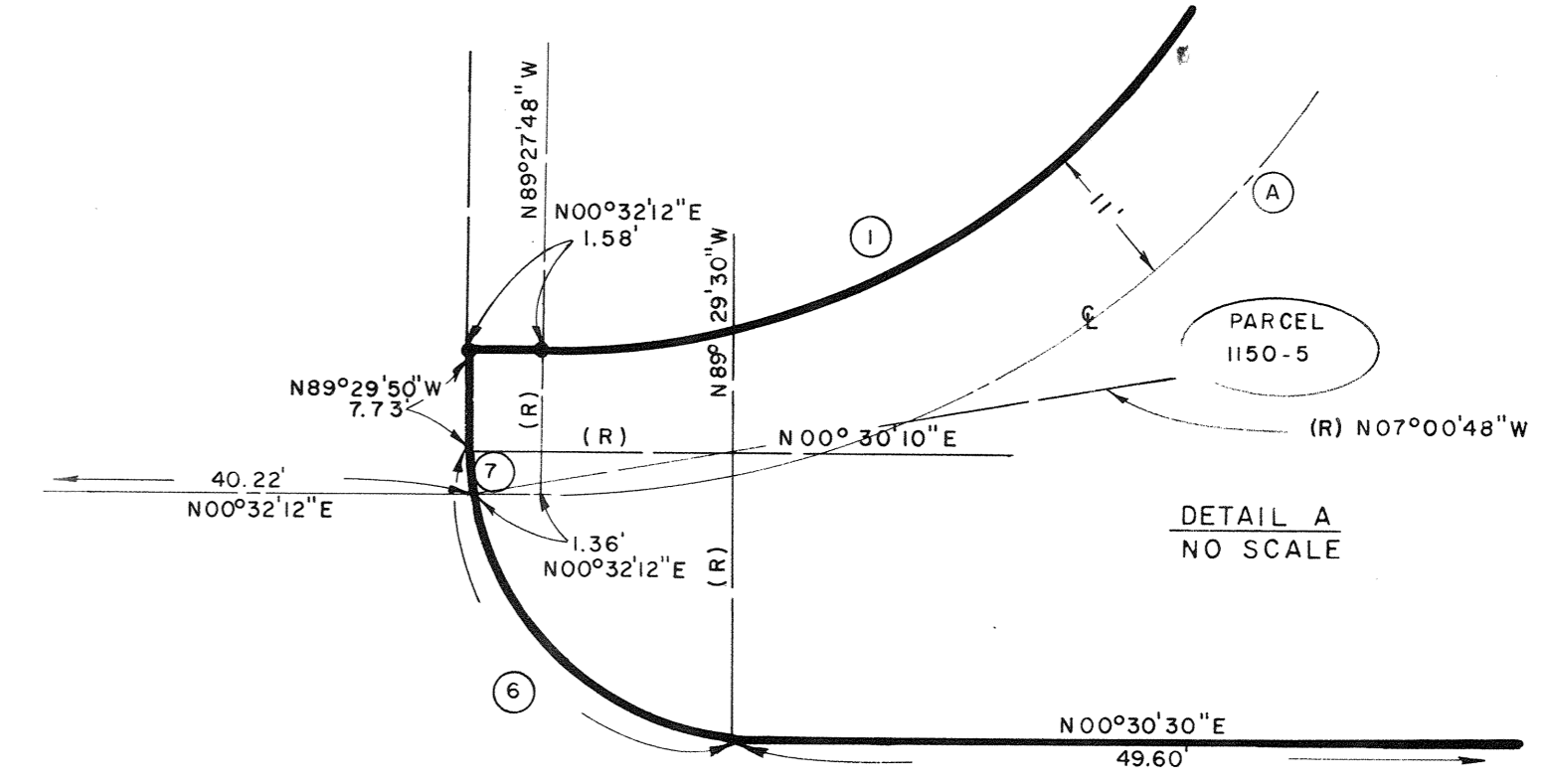
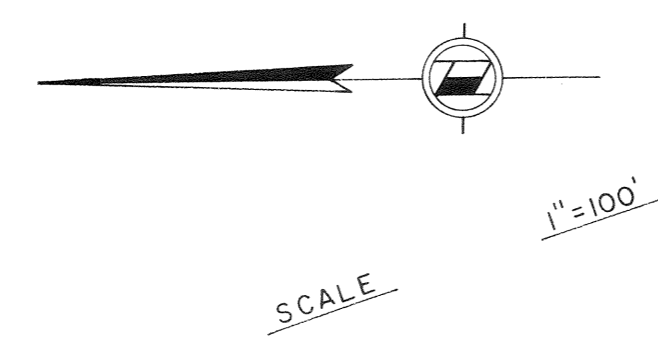
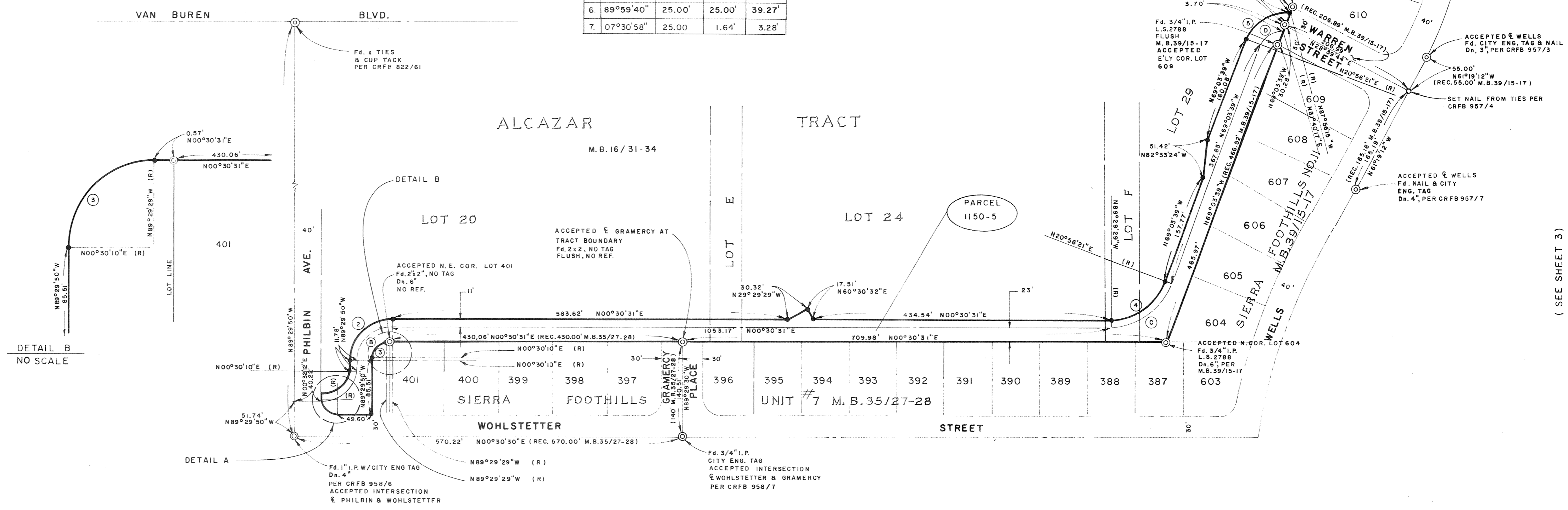


IN THE CITY OF RIVERSIDE  
IN THE COUNTY OF RIVERSIDE  
**RECORD OF SURVEY**



#	Δ =	R =	T =	L =
1.	90°02'02"	39.00'	39.02'	61.28'
2.	90°00'21"	61.00'	61.01'	95.83'
3.	90°00'21"	25.00'	25.00'	39.27'
4.	69°34'10"	89.00'	61.82'	108.07'
5.	71°07'24"	68.00'	48.61'	84.41'
6.	89°59'40"	25.00'	25.00'	39.27'
7.	07°30'58"	25.00'	1.64'	3.28'

#	Δ =	R =	T =	L =
A.	90°02'02"	50.00'	50.03'	78.57'
B.	90°00'21"	50.00'	50.00'	78.55'
C.	69°34'10"	100.00'	69.46'	121.42'
D.	60°43'56"	45.00'	26.37'	47.70'



DETAIL B  
NO SCALE

DETAIL A  
NO SCALE

(SEE SHEET 3)