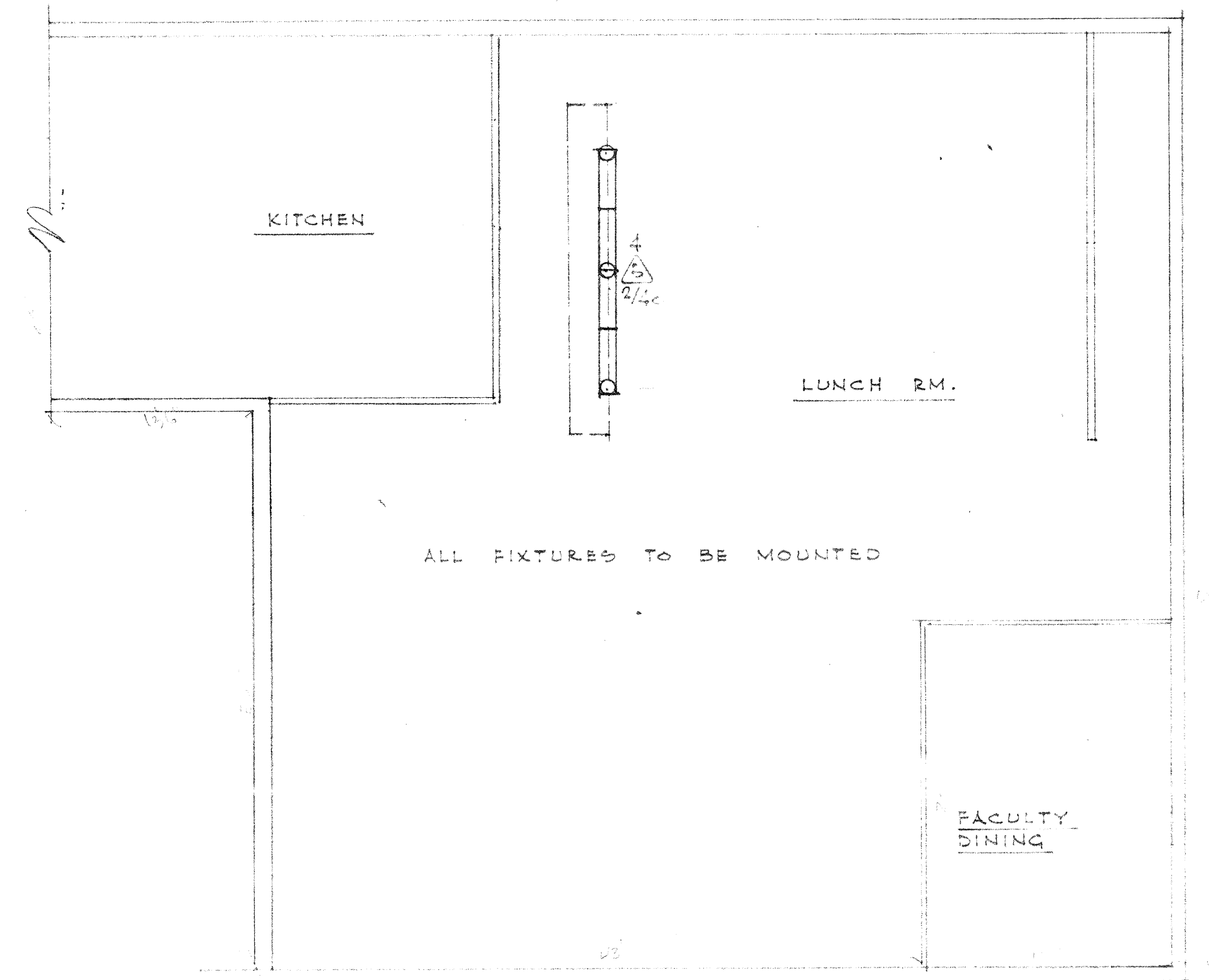
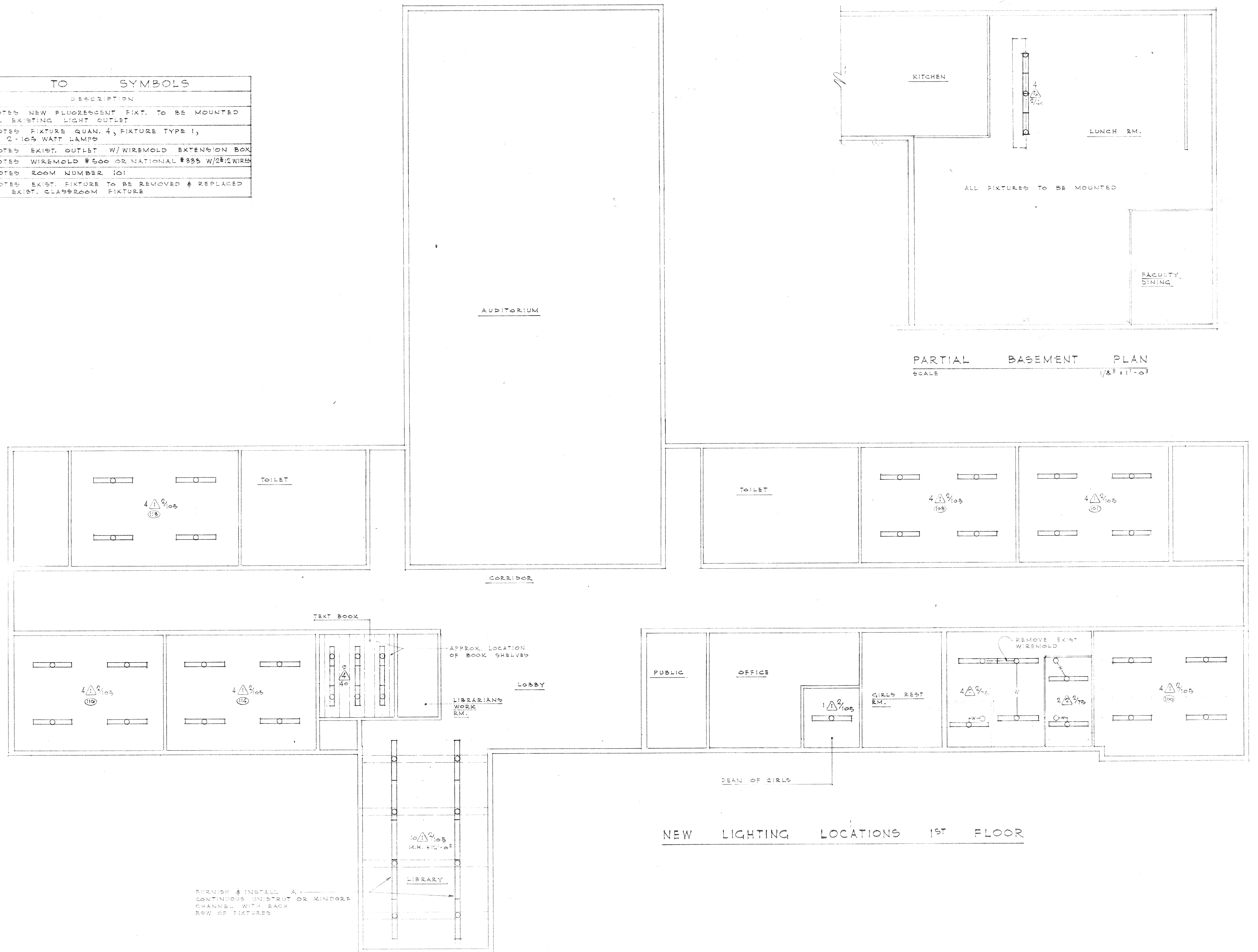


KEY TO SYMBOLS	
SYMBOL	DESCRIPTION
	DENOTES NEW FLUORESCENT FIXT. TO BE MOUNTED OVER EXISTING LIGHT OUTLET
	DENOTES FIXTURE QUAN. 4, FIXTURE TYPE 1, AND 2-105 WATT LAMPS
	DENOTES EXIST. OUTLET W/ WIREMOLD EXTENSION BOX
	DENOTES WIREMOLD #500 OR NATIONAL #335 W/2#12 WIRES
	DENOTES ROOM NUMBER 101
	DENOTES EXIST. FIXTURE TO BE REMOVED & REPLACED WITH EXIST. CLASSROOM FIXTURE



PARTIAL BASEMENT PLAN
SCALE 1/8" = 1'-0"

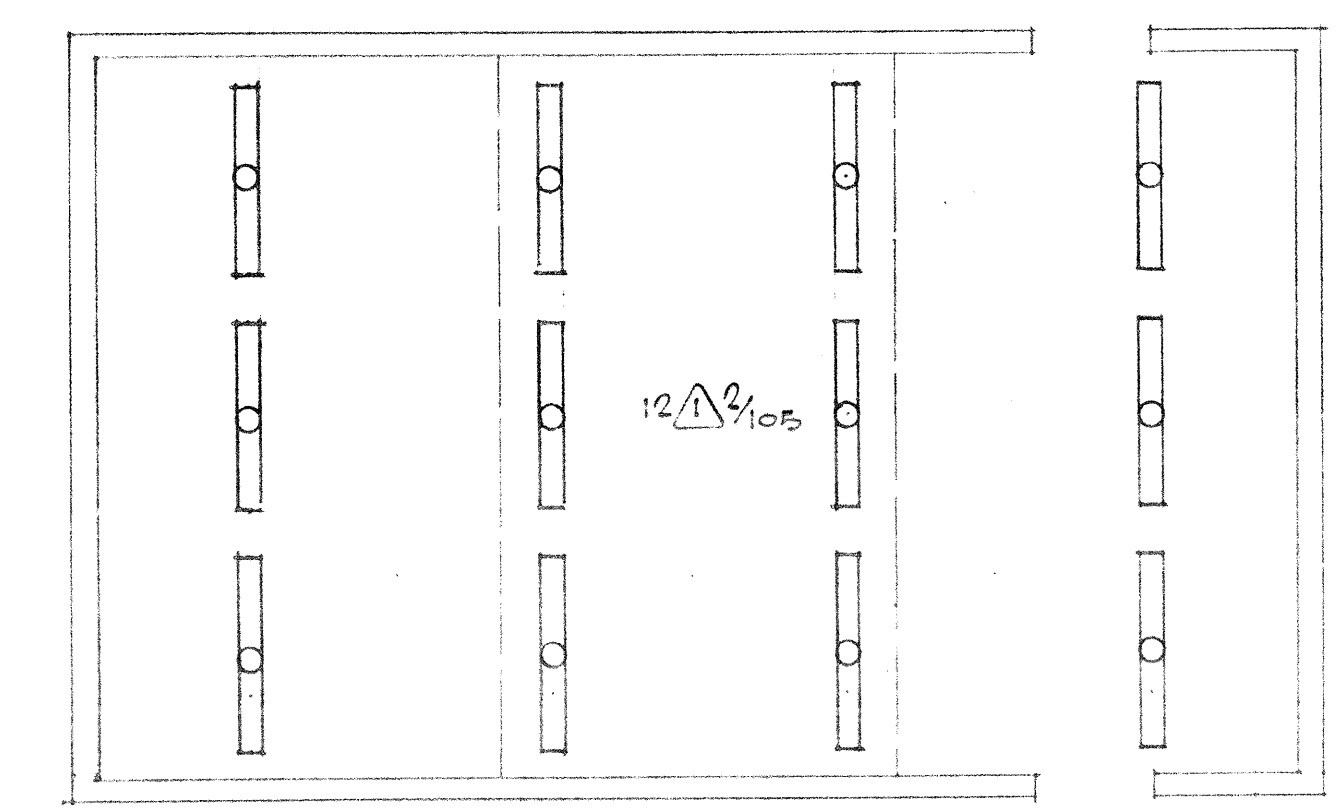


NEW LIGHTING LOCATIONS 1ST FLOOR

RELIGHTING PLAN
UNIVERSITY JR. HIGH SCHOOL

RIVERSIDE UNIFIED SCHOOL DISTRICT
RIVERSIDE, CALIFORNIA

ELECTRICAL
ENGINEER
KEN WAINICKA
ELECTRICAL ENGINEER #2617
3705 Hawthorn St.
Riverside, California



BANDROOM LIGHTING PLAN
SCALE 1/8" = 1'-0"

NEW LIGHTING LOCATIONS 2ND FLOOR
SCALE 1/8" = 1'-0"

RELIGHTING PLAN
UNIVERSITY JR. HIGH SCHOOL

ELECTRICAL ENGINEER
KEN WATSUOKA
ELECTRICAL ENGINEER #2617
3704 Merrill St.
Riverside, California

RIVERSIDE UNIFIED SCHOOL DISTRICT
RIVERSIDE, CALIFORNIA