

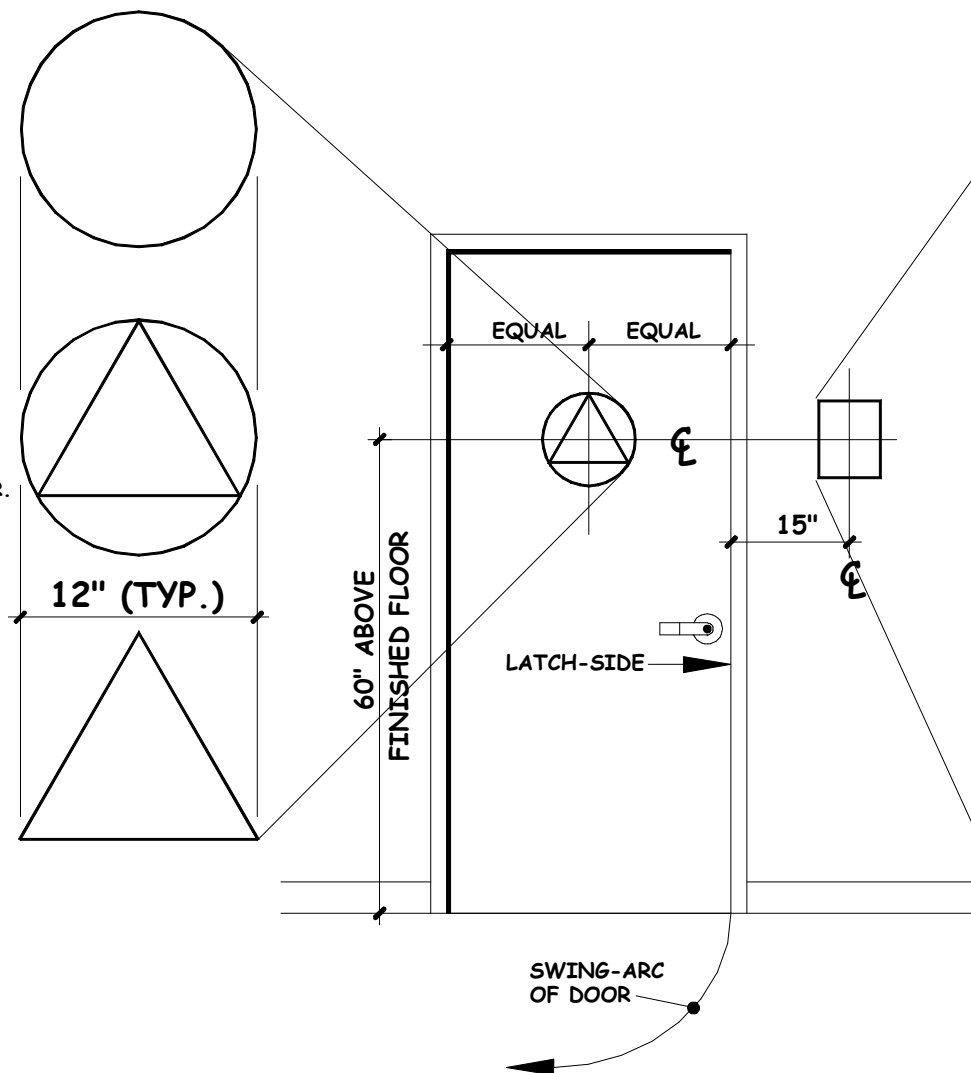
CITY OF RIVERSIDE

City of Riverside
Building & Safety Division
DISABLED ACCESS STANDARDS

DOORWAYS LEADING TO WOMEN'S SANITARY FACILITIES SHALL BE IDENTIFIED BY A CIRCLE 1/4" THICK AND 12" IN DIAMETER.

DOORWAYS LEADING TO UNISEX SANITARY FACILITIES SHALL BE IDENTIFIED BY A CIRCLE 1/4" THICK AND 12" IN DIAMETER WITH A 1/4" THICK TRIANGLE SUPER-IMPOSED ON THE CIRCLE AND WITHIN THE 12" DIAMETER.

DOORWAYS LEADING TO MEN'S SANITARY FACILITIES SHALL BE IDENTIFIED BY AN EQUILATERAL TRIANGLE, 1/4" THICK WITH EDGES 12" LONG AND A VERTEX POINTING UPWARD.



INTERNATIONAL SYMBOL of ACCESSIBILITY

PICTOGRAMS

VERBAL DESCRIPTION

LETTERS AND NUMERALS SHALL BE RAISED 1/32", UPPER CASE SANS SERIF TYPE AND SHALL BE ACCOMPANIED WITH CONTRACTED GRADE 2 BRAILLE. RAISED CHARACTERS SHALL BE AT LEAST 5/8" HIGH BUT NO HIGHER THAN 2".

CONTRACTED GRADE 2 BRAILLE

DOTS SHALL BE 1/10" ON CENTER IN EACH CELL THERE SHALL BE 2/10" SPACE BETWEEN CELLS, MEASURED FROM THE SECOND COLUMN OF DOTS IN THE FIRST CELL TO THE FIRST COLUMN OF DOTS IN THE SECOND CELL. DOTS SHALL BE RAISED A MINIMUM OF 1/40" ABOVE THE BACKGROUND. BRAILLE DOTS SHALL BE DOMED OR ROUNDED.

RESTROOM IDENTIFICATION SYMBOLS

GEOMETRIC IDENTIFICATION SYMBOLS SHALL BE CENTERED ON THE DOOR AT A HEIGHT OF 60" ABOVE THE FINISHED FLOOR.

GEOMETRIC IDENTIFICATION SYMBOLS SHALL BE OF A COLOR AND CONTRAST THAT IS DISTINCTLY DIFFERENT FROM THE COLOR AND CONTRAST OF THE DOOR.

THE COLOR BLUE, EQUAL TO COLOR NO. 15090 IN FEDERAL STANDARD 595B (SIMILAR TO ROYAL BLUE) IS RECOMMENDED.

NO TEXT, NO INTERNATIONAL SYMBOL of ACCESSIBILITY (ISA) OR BRAILLE IS REQUIRED ON THE (DOOR-MOUNTED) GEOMETRIC IDENTIFICATION SYMBOLS.

INACCESSIBLE SANITARY FACILITY SIGNAGE

INACCESSIBLE SANITARY FACILITIES SHALL HAVE DIRECTIONAL SIGNAGE COMPLYING WITH SECTION 1117B.5.1, ITEMS 2 and 3 TO INDICATE THE LOCATION OF THE NEAREST ACCESSIBLE SANITARY FACILITY.

SAMPLE:

ACCESSIBLE SANITARY FACILITIES ARE LOCATED
ON THE GROUND FLOOR
THIS SPACE FOR CORRESPONDING
GRADE 2 BRAILLE

WALL-MOUNTED ACCESSIBILITY SIGNAGE

WALL-MOUNTED ACCESSIBILITY SIGNAGE SHALL CONSIST OF:

RAISED CHARACTERS and PICTORIAL SYMBOLS (a.k.a. PICTOGRAMS) IN ACCORDANCE WITH 2010 CBC SECTION 1117B.5.5.

CONTRACTED GRADE 2 BRAILLE IN ACCORDANCE WITH 2010 CBC SECTION 1117B.5.6.

THE INTERNATIONAL SYMBOL of ACCESSIBILITY (a.k.a. ISA) IN ACCORDANCE WITH 2010 CBC SECTION 1117B.5.8.

WHERE PERMANENT IDENTIFICATION SIGNS ARE PROVIDED FOR ROOMS AND SPACES, SIGNS SHALL BE INSTALLED ON THE WALL ADJACENT TO THE LATCH SIDE OF THE DOOR.

WALL-MOUNTED ACCESSIBILITY SIGNAGE MOUNTING HEIGHT SHALL BE 60" ABOVE THE FINISHED FLOOR TO THE CENTERLINE OF THE SIGN.

WHERE THERE IS NO WALL SPACE ON THE LATCH SIDE, INCLUDING DOUBLE LEAF DOORS, SIGNS SHALL BE PLACED ON THE NEAREST ADJACENT WALL, PREFERABLY ON THE RIGHT.

MOUNTING LOCATION SHALL BE DETERMINED SO THAT A PERSON MAY APPROACH WITHIN 3" OF SIGNAGE WITHOUT ENCOUNTERING PROTRUDING OBJECTS OR STANDING WITHIN THE SWING OF A DOOR. 15", AS MEASURED BETWEEN THE LATCH-SIDE OF THE DOOR AND THE (VERTICAL) CENTERLINE OF THE SIGN, IS RECOMMENDED.

SCALE NONE

PGH 12 / 08
DRAWN DATE

REV.	DATE	APPR.
1	01-01-11	PGH
2		
3		
4		
5		

ACCESSIBLE
TOILET ROOM
SIGNAGE

RDA - 12.0

SHEET

ACCESSIBLE TOILET ROOM IDENTIFICATION SIGNAGE