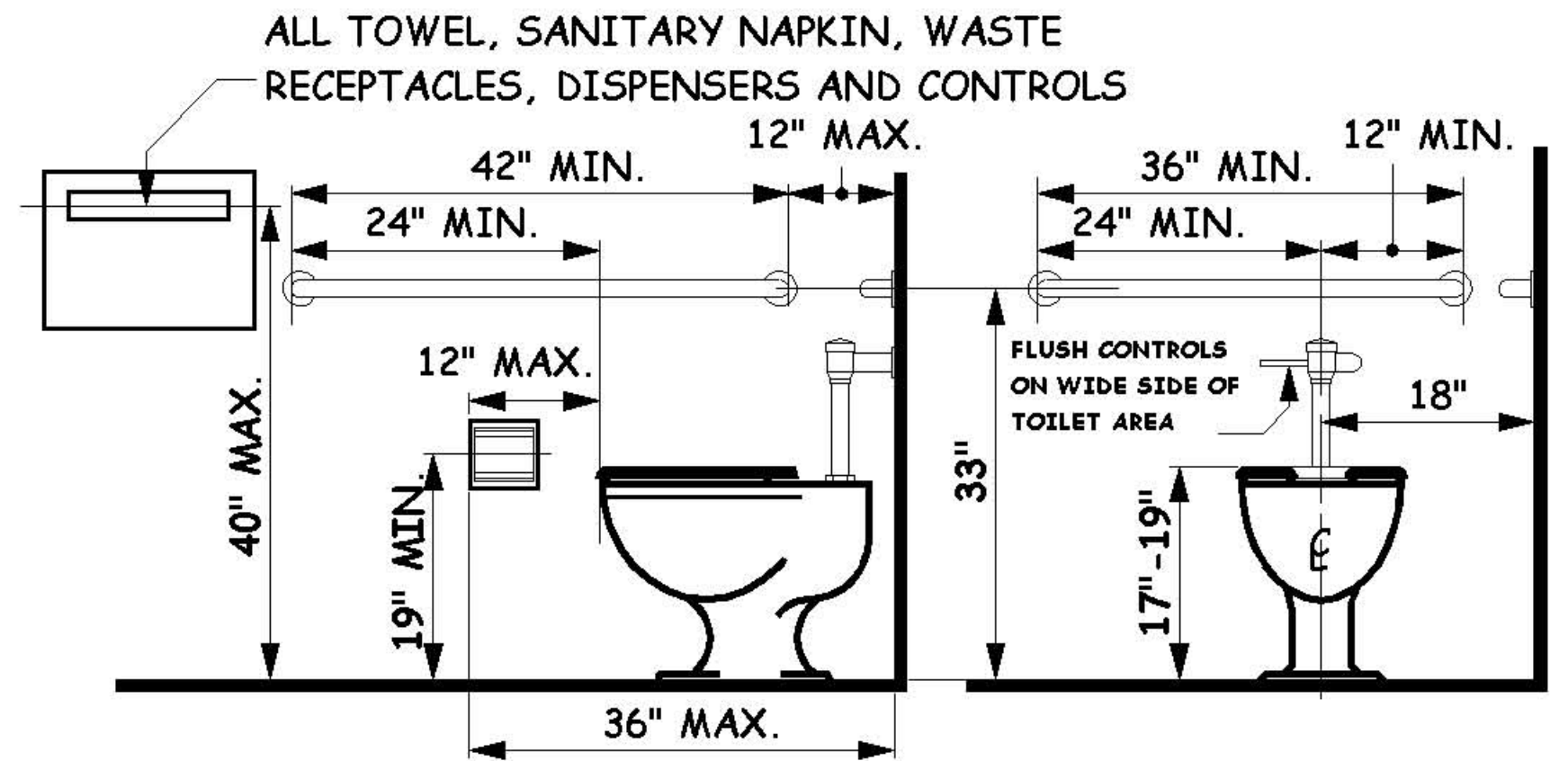
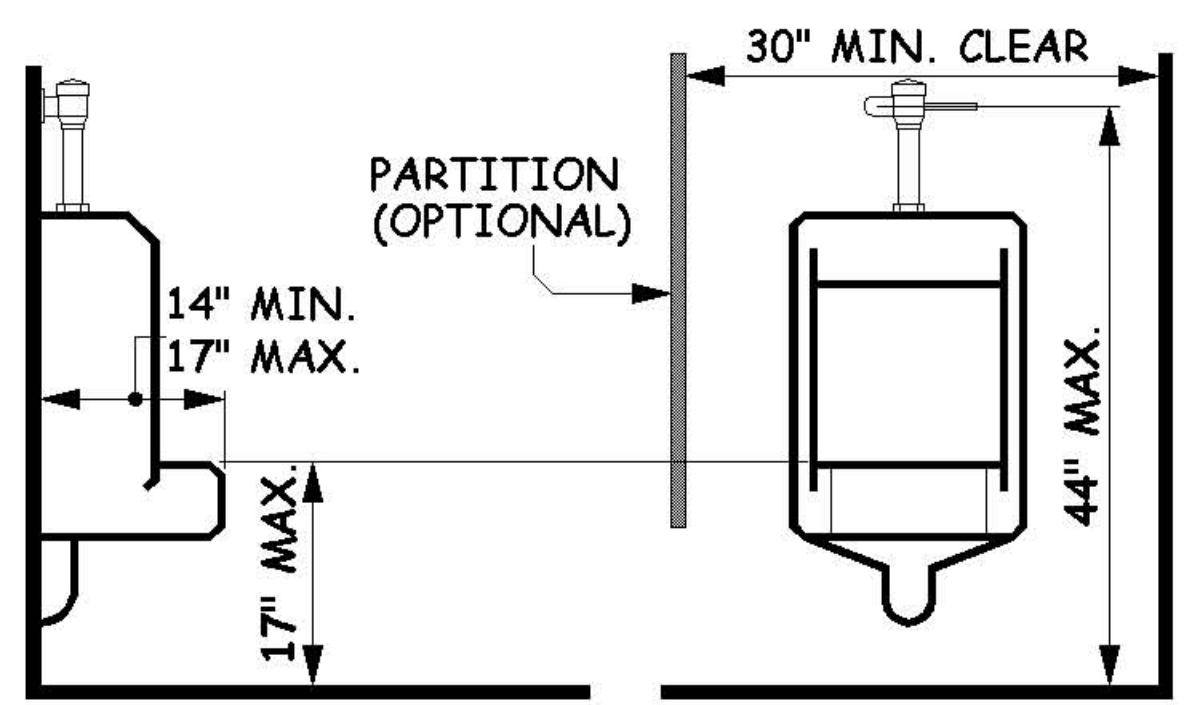


### TYPICAL MULTIPLE-ACCOMMODATION TOILET ROOM

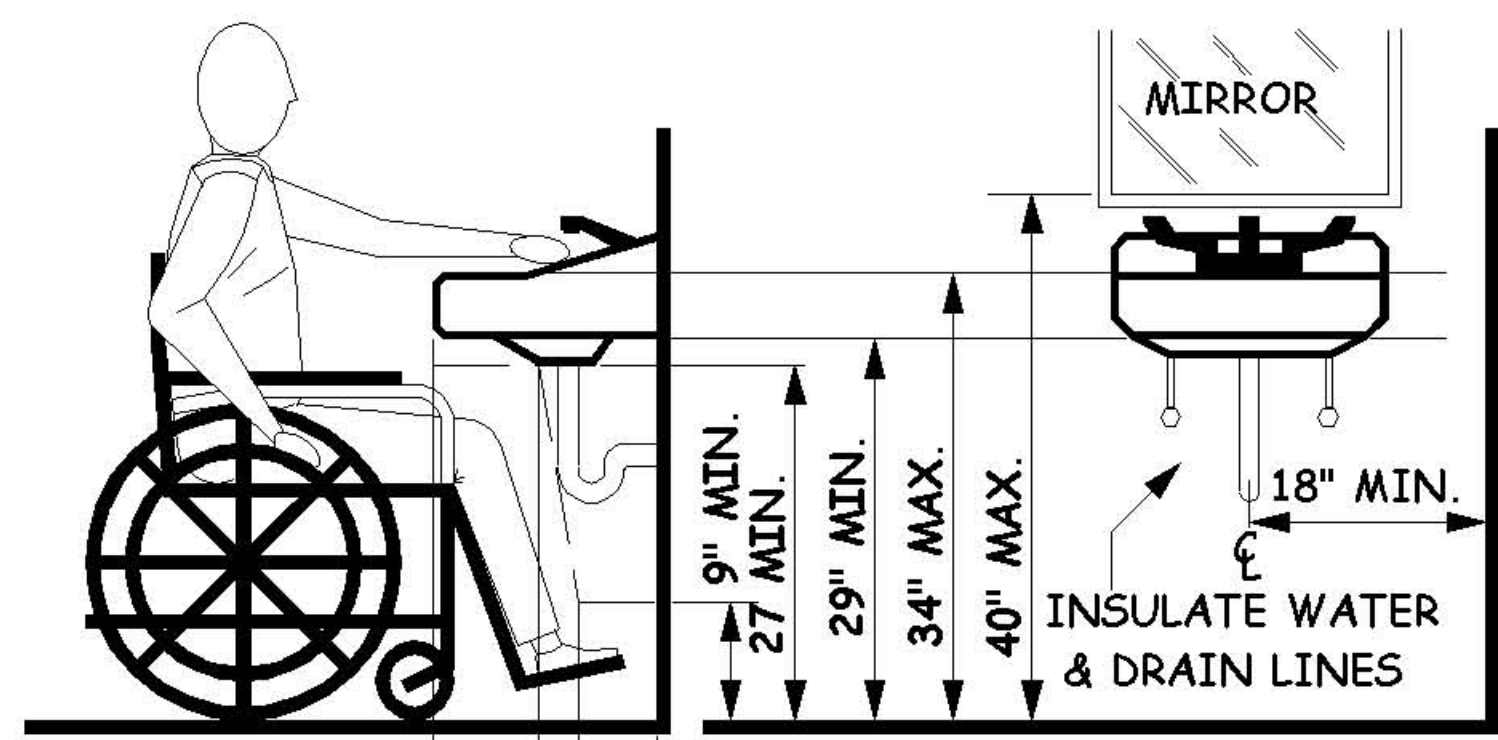
FIXTURE LAYOUTS MAY VARY (ref. 2007 CBC sec. 1115B.3.1)



SIDE FRONT  
**ACCESSIBLE WATER CLOSET**



SIDE FRONT  
**ACCESSIBLE URINAL**



SIDE FRONT  
**ACCESSIBLE LAVATORY**

SCALE	NONE	
PGH	07 / 01 / 08	DATE
DRAWN		
REV.	DATE	APPR.
1	02 / 09	PGH
2	03 / 09	PGH
3		

### MULTIPLE STALL ACCESSIBLE RESTROOM

RDA - 3.3