

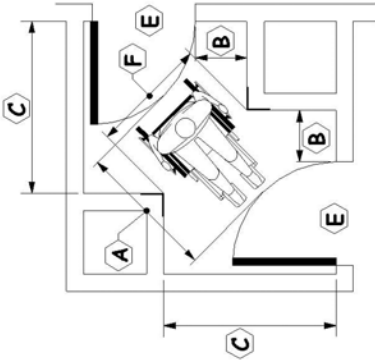


SCALE	NONE	
PGH DRAWN	6 / 02	
DATE		
REV.	DATE	APPR.
1	02/21/08	PGH
2	01/28/09	PGH
3		
4		
5		

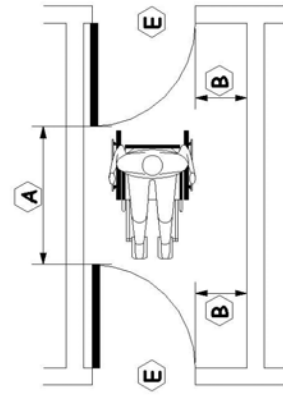
ACCESSIBLE
DOORS

RDA - 4.0

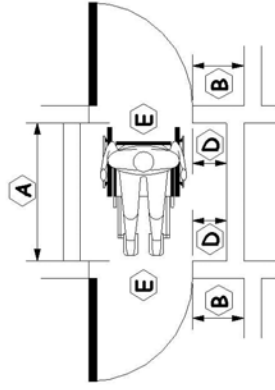
E



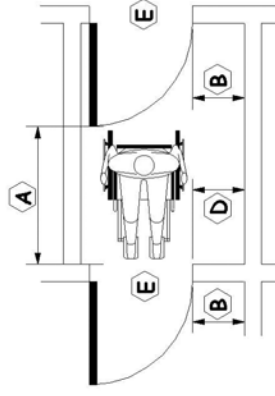
VESTIBULE DOORS AT ADJACENT WALLS



VESTIBULE DOORS AT OPPOSITE WALLS



VESTIBULE DOORS OPENING OUTWARD



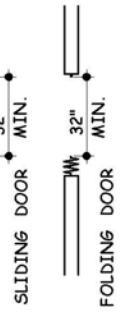
VESTIBULE DOORS OPENING IN SERIES

KEYNOTES

- A MIN. 48 INCHES CLEAR BETWEEN DOORS.
- B MIN. 18-INCH STRIKE-EDGE CLEARANCE @ INTERIOR DOORS AND, MIN. 24-INCH STRIKE-EDGE CLEARANCE @ EXTERIOR DOORS.
- C MIN. 60-INCH CLEAR ON "PULL" SIDE OF DOOR.
- D MIN. 12-INCH STRIKE-EDGE CLEARANCE IF DOOR IS EQUIPPED WITH BOTH A LATCH AND A CLOSER.
- E MIN. 32-INCH CLEAR WIDTH OPENING.
- F MIN. 36-INCH CLEARANCE AT NARROWEST PATH OF TRAVEL.

VESTIBULES & DOORS IN SERIES

ALLOW CLEARANCE FOR PULL HANDLES ON DOOR



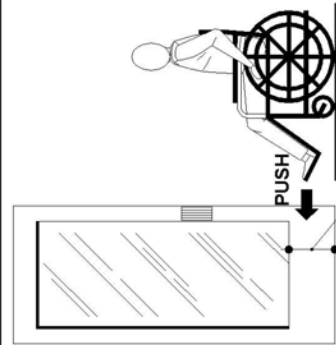
IF OFFSET "X" IS GREATER THAN 8" THEN STRIKE-EDGE CLEARANCE IS REQUIRED



HINGED DOOR

B

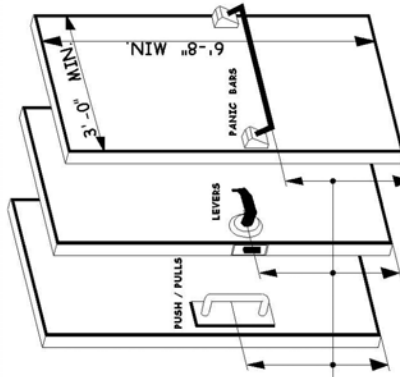
MINIMUM CLEARANCES @ DOORS



10 INCH HIGH SMOOTH SURFACE SHALL BE PROVIDED ON THE "PUSH" SIDE OF THE DOOR

A

SMOOTH SURFACES @ DOORS



INSTALL OPERATING HARDWARE 34- to 44-INCHES ABOVE FLOOR

- 5 LB. MAX. EFFORT TO OPERATE INTERIOR DOORS.
- 5 LB. MAX. EFFORT TO OPERATE EXTERIOR DOORS.
- 15 LB. MAX. EFFORT TO OPERATE FIRE DOORS.

C

ACCESSIBLE DOOR OPERATING HARDWARE



D

THRESHOLDS @ DOORWAYS