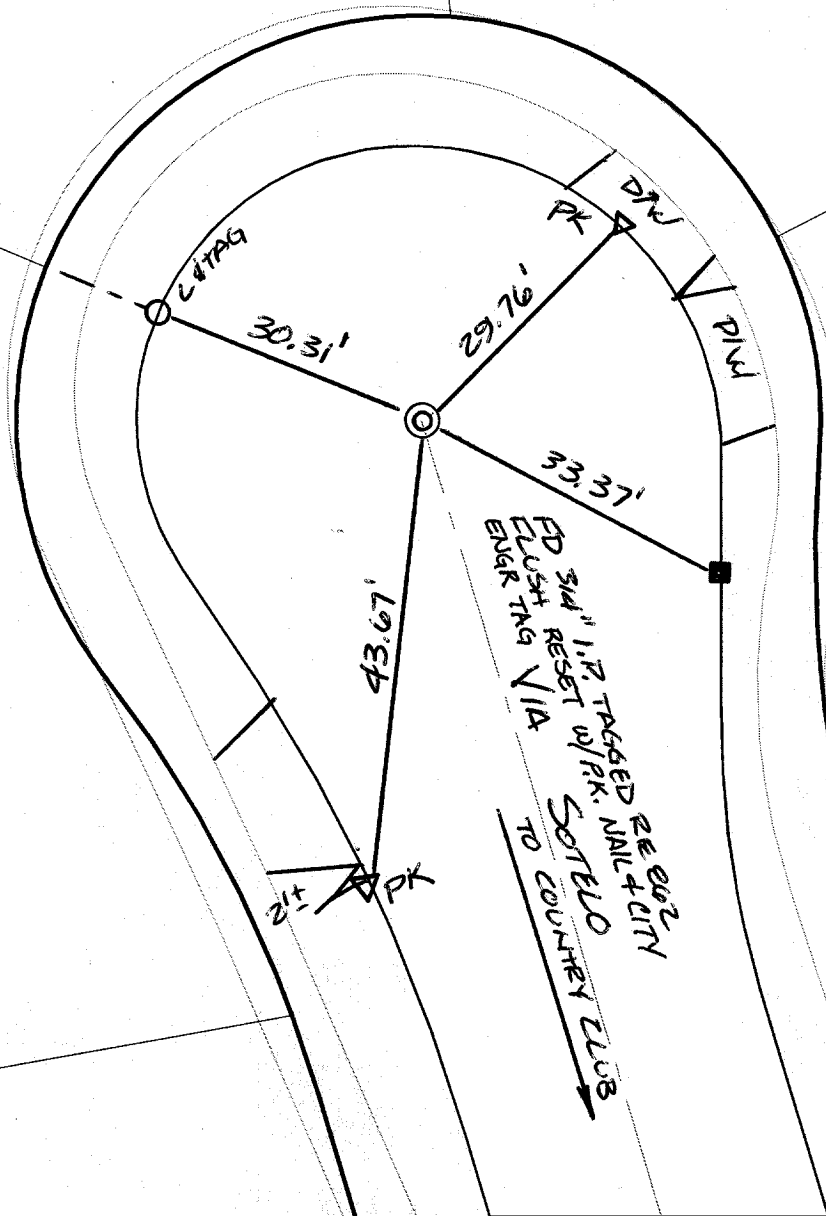


SWING TIES

HISTORICAL DATA
DAVIDSON TIES
TR 3439



Street: **VIA SOTELO CUL-DE-SAC** X-Street: **N'LY OF COUNTRY CLUB**
C10018 TIF
OFFICIAL USE ONLY

- × FD. Ramset Nail on T/C
- FD. LD. & TK. on T/C
- FD. "C" Nail on T/C
- Set LD. & TK. on T/C
- P.K. and City Engineer tag to be set @ surface after street construction is complete. (If possible)

Scale: 1" = 20'
Date: 02/13/02
Drawn by: survey
F.B.:
TR-Sec: T2SR4W-31

OFFICIAL TIE PLAT CITY OF RIVERSIDE

These ties are for the purpose of perpetuating the found monumentation. No claim is made as to the relationship of the points or lines shown hereon to true boundary locations.



Sheet 1 of 1
Cadme MB: 56-4