

14430.TIF

Street:

TORREY STREET

X-Street:
OFFICIAL USE ONLY

CUL-DE-SAC

TRANSIT TIES

TORREY STREET

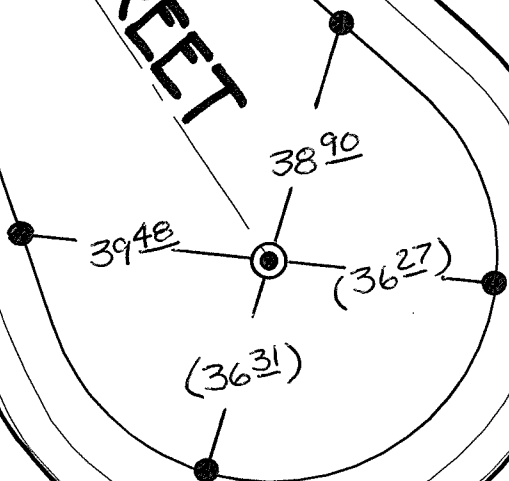
3415

3405

3410

3400

() REC. DISTANCE PER
CITY TIES



⊙ FD 1" I.P. W/LS 2921
TAG PER CITY TIES
FLUSH REPLACED W/
GEAR SPK + LS8294
TAG FLUSH

- ✕ FD. Ramset Nail on T/C
- FD. LD. & TK. on T/C
- FD. "C" Nail on T/C
- Set LD. & TK. on T/C

P.K. and City Engineer tag to be set @
surface after street construction is
complete. (If possible)

Scale: 1" = 30'
Date: 08/21/15
Drawn by: pw
F.B.:
TR-Sec: T3SR6W-23

OFFICIAL TIE PLAT

CITY OF RIVERSIDE

*These ties are for the purpose of perpetuating the found
monumentation. No claim is made as to the relationship of
the points or lines shown hereon to true boundary locations.*



Sheet 1 of 1
Cadme MB: 79-8