



MUSEUM of
RIVERSIDE

BIENNIAL REPORT

2020-2022

Analytique architectural watercolor
drawing by California Baptist University
architecture student Pablo Antonio Leiva

RIVERSIDE



PROGRESS!

For the Museum of Riverside, the the past two fiscal years (July 1, 2020 - June 30, 2022) have been dominated by the unexpected. Yet, we have persevered in the face of all that has fallen in our path, moving toward action on Harada House, resumption of work with the main museum architects, development of new programs, and substantial progress on managing and documenting the collections.



Pre-design concept provided by Pfeiffer Partners Architects.

In July 2020, the start of the biennium, staff were returning to work after a three-month stay-at-home order prompted by the COVID-19 pandemic. Although we didn't know it then, we were only at the beginning of the pandemic. With the main museum already closed (since September 2017), having to close Heritage House as well was a blow to our ability to connect with our audiences. With the help of our partners in the Riverside Museum Associates and the Harada House Foundation, as well as our university colleagues, and many others, the Museum of Riverside offered webinars, online collection updates, and educational moments. We made good progress on collections projects. At the earliest opportunity available to us, we reopened Heritage House in

September 2021. Two exhibitions annually, Moon Festival, Behind the Black Veil, Christmas Open House, and many other new and returning events followed. School tours were suspended throughout this two-year period, and staff are working with the school districts to resume this important adjunct to elementary and middle-school education as soon as safe and feasible. **We thank all who have supported the Museum of Riverside during this challenging time! We are grateful to those who have eagerly collaborated to present programs and to those who have supplied the support to make those programs possible.**



Pandemic-cleared streets. Courtesy of Riverside Fire Department



Analytique watercolor by Pablo Antonio Leiva

EXHIBITIONS

CATHARINE'S CLOSET

September 10 - November 21, 2021
Heritage House

Historic garments from the permanent collection reflecting fashionable wear from the 1860s to the 1920s when Heritage House's original resident Catharine Bettner lived in the house.

Developed and presented by staff members Brenda Buller Focht, Katie Grim, Lisa Masengale, and Teresa Woodard Belding

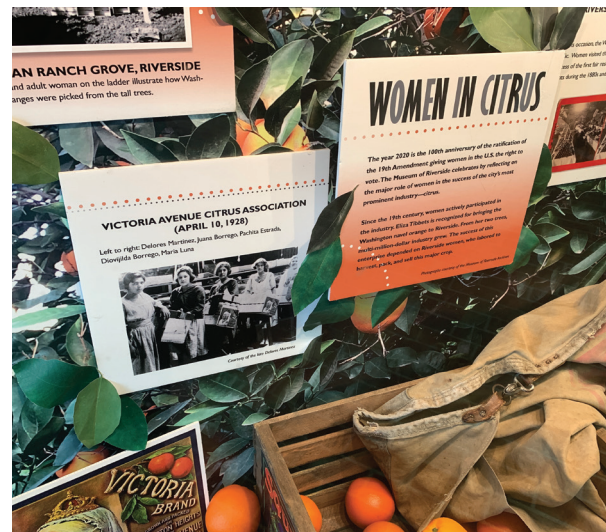


WOMEN IN CITRUS

Opened on October 28, 2021
Arlington branch of Riverside Public Library

Arlington branch of Riverside Public Library
A small exhibition spotlighting the work of women in all aspects of Riverside's citrus industry.

Developed and presented by Brenda Buller Focht and Danielle Leland



COMMON THREADS: QUILTS, CLOTHING, AND TEXTILES FROM THE HAYES FAMILY COLLECTION

March 18 - June 26, 2022
Heritage House

Including never-before-exhibited handmade quilts from three generations of women in the Riverside-based Hayes family.

Developed and presented by Brenda Buller Focht, Katie Grim, Lisa Masengale, and Teresa Woodard Belding



PROGRAMS & EVENTS

During the pandemic, staff pivoted to offering webinars and online educational moments via social media. In this way, we reached hundreds of thousands and kept our fans up to date. Webinars centered on Harada House, as we worked toward our Harada House Campaign goal. *“Learning from the Harada Story”* (<https://youtu.be/OBhsk31VuhU>), *“Harada House: A Family’s Story”* (<https://youtu.be/CSD0D0ZxUaw>), and *“If Only We Dare: From the Harada Story to Ending Asian Hate”* (<https://youtu.be/Ovuz4ls0IFM>) were all well-attended. Coordination of these webinars was done in collaboration with the Harada House Foundation and the Inlandia Institute.

AUDIENCE

	On-site in-person	Off-site in-person	Digital
2020-2021	408	0	356,503
2021-2022	6,492	3,098	430,907

**HARADA HOUSE:
A FAMILY'S STORY**

January 21, 2021
6:00 – 7:30 p.m. PDT

Speaker: Lisa Masengale
Curator of Historic Structures
Museum of Riverside

Find out more about the Harada family themselves, their immigrant experience, and the path of an ordinary home to National Historic Monument.

ZOOM REGISTRATION:
<https://tinyurl.com/HaradaFamilyStory>

Harada House Foundation
National Historic Landmark

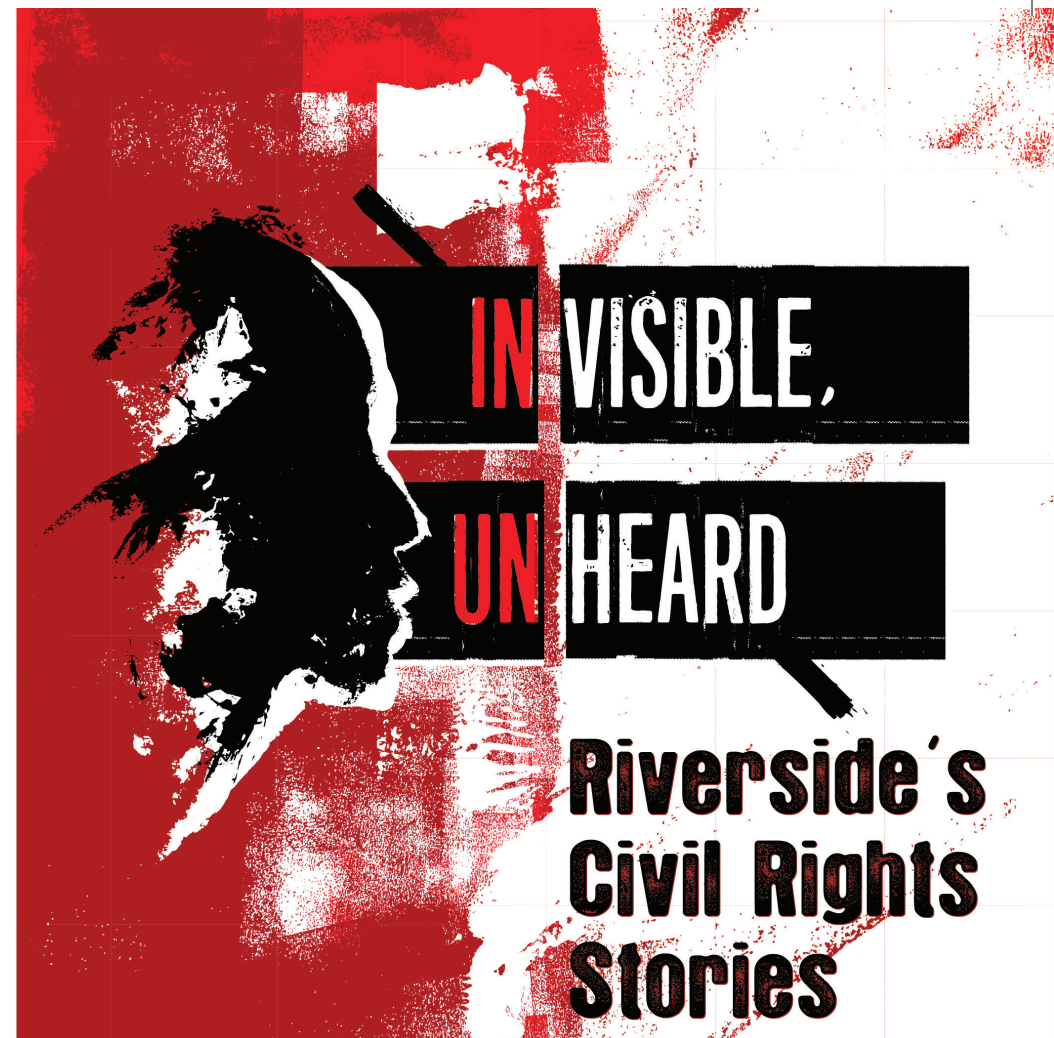
INLANDIA @ home

Museum of Riverside





Susan Ossman's interactive art event, One and Many, at Artwalk.



Citrus history, women's rights, and the 2022 collaborative series In/VISIBLE, Un/HEARD: Riverside's Civil Rights Stories enabled us to trace the line between past and present, and between the world and the local.

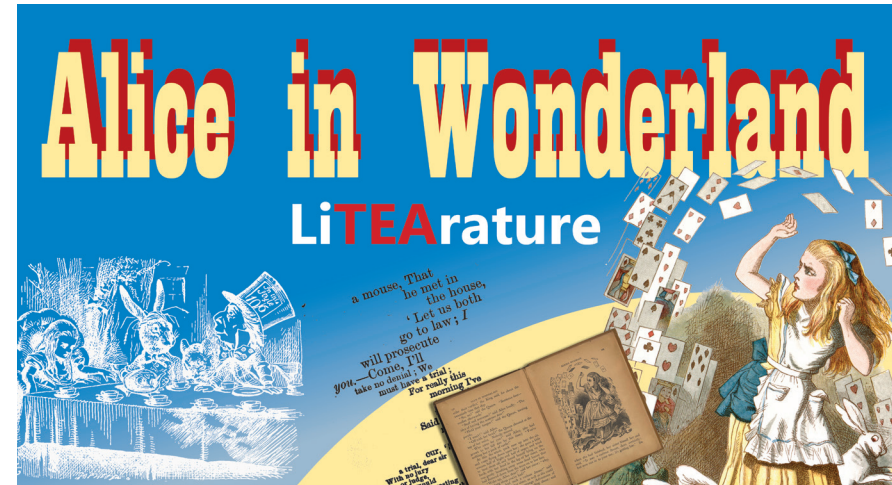
PROGRAMS & EVENTS



Waiting for moonrise at
Moon Festival

Other digital releases included a video of Rose Ann Hamilton reciting a Cahuilla story (<https://youtu.be/ZSS3RL7v5SI>), a video in the wake of the events of May and June 2020 that emphasized the explosion of local murals (<https://youtu.be/4cREjRXdQ7E>), and a short video tour of Harada House in its current condition (https://www.youtube.com/watch?v=JSdWTR_eF3k).

We launched a new program series, coordinated by Douglas J. Long, Curator of Natural History, called *Nights with the Museum*. Continuing indefinitely, the series features a different speaker and wide variety of topics on the first Friday of each month. The rave reviews we received for another new program, an Alice-in-Wonderland-themed tea at Heritage House, coordinated by Teresa Woodard Belding, guarantees its return in 2023.



PROGRAMS & EVENTS



Captain Carl

Revived and recurring programming continued, including Insect Fair (<https://www.youtube.com/watch?v=pIWU-7kNEJg>), First Sundays, Artswalk, Moon Festival, Behind the Black Veil, Christmas Open House, and the Multi-cultural Council's Day of Inclusion. Special programs occurred in conjunction with the exhibitions at Heritage House or simply because!



Reptile Joe introduces kids to one of his reptile friends at First Sunday.

COLLECTIONS

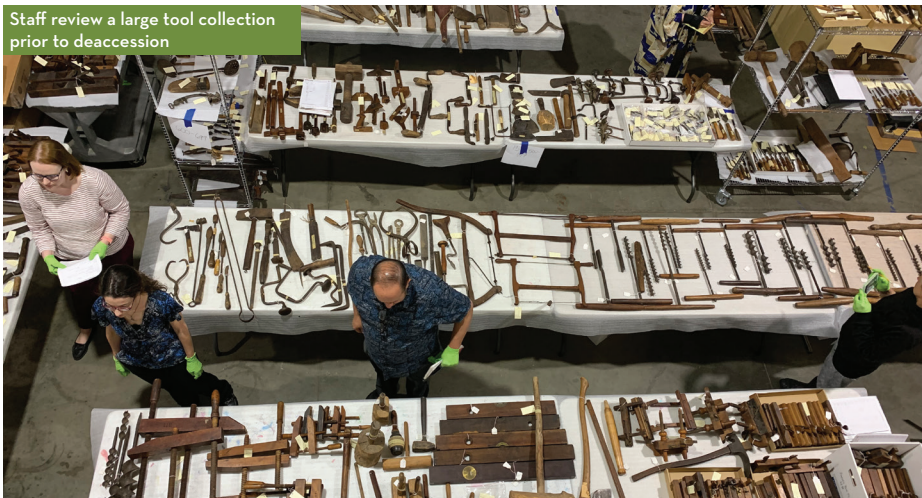
Staff migrated to a more efficient, versatile software for documentation of the collections. Refinement of the collection and closer alignment with the Museum's mission continue through the process of adding (accessioning) and removing (deaccessioning) objects from the permanent collections.

Deaccessions included artifacts deviating from the Museum's mission and those requiring repatriation to Indigenous nations in compliance with the Native American Graves Protection and Repatriation Act.

The Museum also launched two rapid response collecting initiatives to acquire artifacts for the Community Collection relating to the local response to COVID-19 and to the civil rights events of May-June 2020; both of these collections remain open for additional donations.

	Accessions to the permanent collections	Deaccessions from the permanent collections	Artifacts or specimens on loan
2020-2021	27	706	30
2021-2022	88	2	17

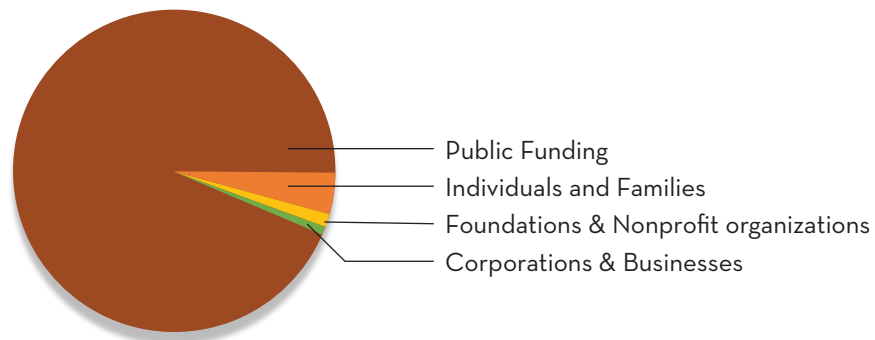
Staff review a large tool collection prior to deaccession



HARADA HOUSE

AND THE HARADA HOUSE CAMPAIGN

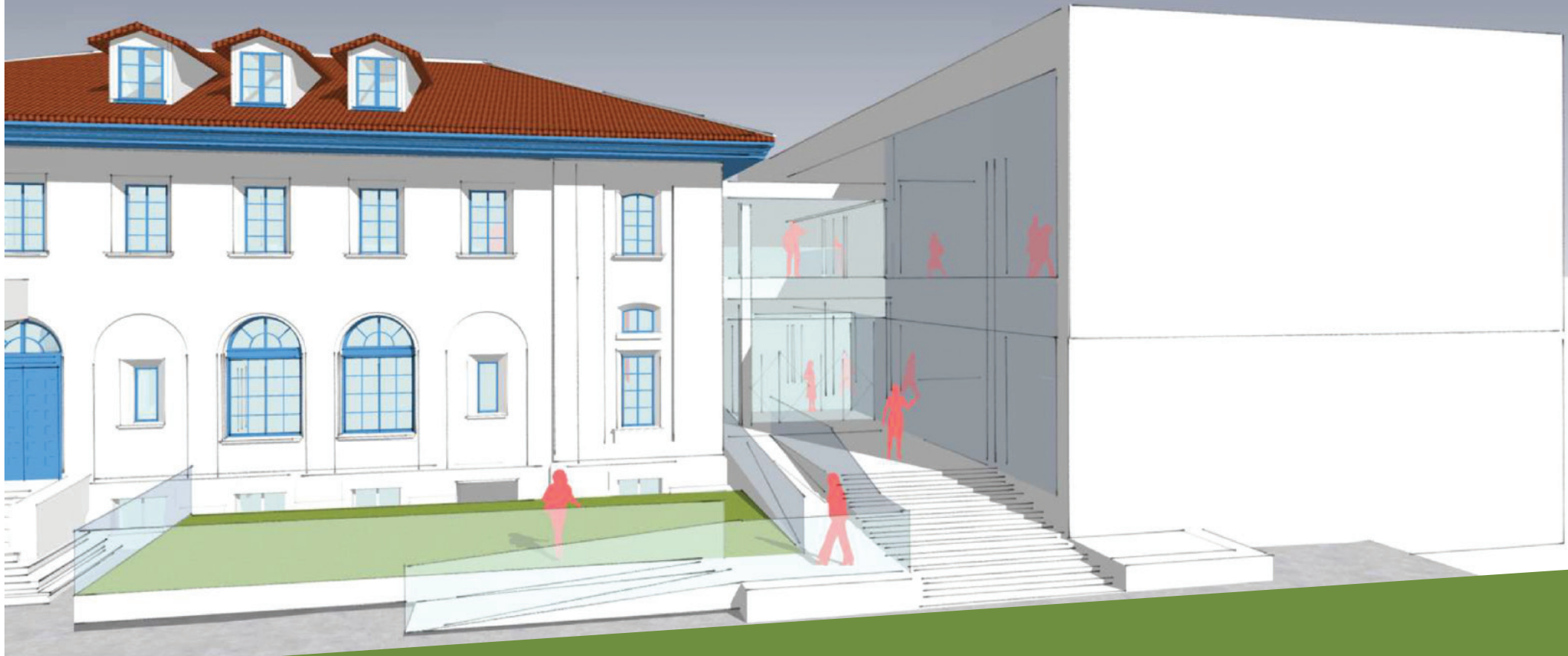
Contributions by Source, All Funds



Both fundraising and planning for the Harada House rehabilitation made great strides during the 2020-2022 biennium.

- Awarded a \$500,000 federal “Save America’s Treasures” grant from the National Park Service, permitting launch of Phase I of the Harada House rehabilitation project.
 - Harada House included on the National Trust for Historic Preservation’s 2020 11 Most Endangered Historic Places List.
 - The State of California allocates \$7 million for the preservation of Harada House in the 2021-2022 state budget.
 - Harada House becomes California State Historical Landmark #1060.
 - IS Architecture of La Jolla, California, is selected after competitive processes for Phase I of the Harada House rehabilitation and for the demolition and reconstruction of the Harada House Interpretive Center next door. Work with the architect is expected to begin during the summer of 2022.
 - As of June 30, 2022, the Harada House Campaign stood at 123% of its initial \$6.5 million goal. Fundraising continues for endowment and programming support.
- As of June 30, 2022, lead donors to the Harada House campaign are:
 - **\$7,000,000**
 - ♦ State of California
 - **\$500,000 - \$999,999**
 - ♦ National Park Service, Save America’s Treasures
 - **\$100,000 - \$249,999**
 - ♦ Dwight Tate and Kathy Wright
 - **\$50,000 - \$99,999**
 - ♦ Dave and Peggy Barnhart
 - ♦ The Families of Denzo and Shie Sanematsu, in partnership with the City of Riverside
 - **\$25,000 - \$49,999**
 - ♦ Aratani Foundation
 - ♦ Grace Nixon Foundation
 - **\$10,000 - \$24,999**
 - ♦ Anonymous
 - ♦ Architectural Resources Group *
 - ♦ IS Architecture *
 - ♦ Japanese American Citizens League, Riverside Chapter
 - ♦ Venita and Kirke Jorgensen
 - ♦ Metabolic Studio
 - ♦ Robyn G. Peterson

* = indicates gift in-kind



MAIN MUSEUM

The pandemic placed the architectural planning process for the main museum renovation on hold for the biennium. At the point the project was paused, the City's Budget Engagement Commission had endorsed the approach recommended by staff, which comprises rehabilitation of the 1912 core of the historic downtown building and construction of a two-story,

purpose-built expansion on the back. The result would be about a 40% increase in usable space with flexibility and appeal to meet the needs of coming generations. Work is expected to resume with the Museum of Riverside's architect, Pfeiffer, A Perkins Eastman Studio, in late summer or early fall 2022.

OTHER HIGHLIGHTS

The Museum adopted a new brand, one that places us in a good position to market future exhibitions and programs both within and beyond the Riverside community. Staff are grateful for the opportunity to have worked with California Baptist University's advanced graphic design students and their instructor Michael Berger on this effort. Designer Hannah Jones's design was the clear winner.

A new Collection Development Plan was approved in December 2020, and a new Education and Interpretation Policy in March 2021. These important documents guide staff's approach to the collections and codify philosophies around program development. We refreshed our five-year strategic plan, effective on July 1, 2022, which will guide us toward and through our 100th anniversary in 2024 and the major constructions projects ahead at the main museum and Harada House.

Since 2017, Heritage House has been the Museum's only site open to the public. Apart from the pandemic closure, staff have worked to program actively at this location. The Museum relies on the Riverside Museum Associates for support in operating Heritage House and could not have accomplished so much without this loyal group of supporters. Important projects to maintain and enhance Heritage House were completed during the past two fiscal years, not least among them being resurfacing the drive and parking lot.





MUSEUM of RIVERSIDE

3580 Mission Inn Avenue
Riverside, CA 92501

951-826-5273
museumofriverside.org
info@museumofriverside.org

The Museum of Riverside is a department of the City of Riverside and is grateful to the City of Riverside for support of the Museum's sites and programs.



To learn more:
www.museumofriverside.org



@museumofriverside



Museum of Riverside

STAFF

Teresa Woodard Belding, Education Curator
Brenda Buller Focht, Ph.D., Museum Curator
Katie Grim, Collections Registrar
Toni Kinsman, Senior Office Specialist
Amanda Langevin, Office Specialist
(until January 14, 2022)
Danielle Leland, Associate Education Curator
(Science) (until March 17, 2022)
Douglas J. Long, Ph.D., Curator of
Natural History
Ann Lovell, Manager of Operations
Lisa Masengale, Curator of Historic
Structures (until January 6, 2022)
Cesar Mendez, Museum Maintenance
Robyn G. Peterson, Ph.D., Museum Director